



**BEHIND THE CAPE'S  
BEST RESTAURANTS**

**FRESH.  
LOCAL.**

**Product Guide**

**800-649-9827**

**[www.ringbroswholesale.com](http://www.ringbroswholesale.com)**







The mission of Ring Bros. Wholesale is to responsibly source the highest quality fresh produce and specialty foods for chefs and retailers on Cape Cod and in Southeastern Massachusetts.

The company got its start more than 96 years ago; Stephen Ring Sr, a teenager, and his older brother, Edmund, peddled produce from a horse-drawn wagon along the streets of Boston. “Sweet, juicy peaches!” Stephen would yell as he pulled up to a street corner. “Quarter a dozen!” Later, Stephen would take his sons, Ed and Stephen Ring Jr., along to help.

The Rings built a devoted customer base by hand selecting the finest fruits and vegetables from farmers locally, and from farms worldwide that shared their standards for sustainable agricultural practices and quality.

With these values in mind, Ed Ring opened the first permanent wholesale and retail location of Ring Bros. on Cape Cod in the 1970s in Harwich and a specialty store, Broadway Marketplace, near Harvard Square in 1992. Ring Bros. moved from Harwich to its current location in South Dennis in 2001 where it is now owned and operated by Ed, his wife and his son.



The South Dennis location offers 16,000 square feet of retail space and expanded capacity for wholesale operations. We invite you to visit our specialty retail store and to tour our cutting edge wholesale facility at 485 Route 134 in South Dennis, Cape Cod.

# About Us

## *Members of The Massachusetts Restaurant Assoc.*

We are associate members of the Massachusetts Restaurant Association! The MRA is a trusted not-for-profit trade association committed to the advancement of the food and beverage industry in our state. The MRA helps operators succeed by providing information, education, government advocacy, cost-savings programs, and networking opportunities.



## *Members of The American Culinary Federation*

Our wholesale manager, Rich Mulcahy represents Ring Bros. Wholesale as an associate member of the American Culinary Federation. The American Culinary Federation, Inc. (ACF), a professional organization for chefs and cooks, was founded in 1929 in New York City. ACF is now the largest professional chefs' organization in North America. The ACF is made up of more than 15,000 members belonging to more than 150 chapters in four regions across the U.S. Today, ACF is the leader in offering educational resources, training, apprenticeship, competitions and programmatic accreditation designed to enhance professional growth for all current and future chefs and pastry chefs.



## *Local Service*

We are based right here on Cape Cod so servicing our customers is what we do best. With delivery seven days a week from Plymouth to Provincetown we can react to ordering errors or issues in the kitchen quickly because of our location.



# *This is How*



## *Quality Product - Higher Yield*

Customers have told us that they want quality at a good price. We can compete because we buy direct from farms around the country. We buy only quality driven produce brands on the market which tend to provide a higher yield with less shrink, ultimately saving our customers money. Plus each and every case of product is looked over for freshness before it is sent out on a truck to your location.



## *Our Commitment To LOCAL*

We understand the nature of business on Cape Cod because we live here too. Our economy is driven by tourism and a 'local taste' is often requested. We support small scale agriculture by purchasing fruit and vegetables from Cape Cod and surrounding farmers. For 2021 we have increased our local offerings, supplying fresh lettuce from Little Leaf Farms in Devons, seasonal produce from Crow Farm in Sandwich, and fresh grown corn from Confreda Farm in Rhode Island, so take a look for  labels throughout this guide.



## *Loyalty and Consistency*

We work as an extension of your team, a wholesaler you can trust to deliver your order on time, a partner that is invested in helping you build your restaurant or retail business. We try and go beyond what you might expect. Our customers buy from us because we have proven ourselves, which brings loyalty to our company and yours.



# *We Excel*

# Ordering Methods

Customers may place an order 24 hours per day, 7 days per week.  
*For next day delivery please order by midnight.*

## Order Online

***www.ringbroswholesale.com***

Powered by iBistro, our ordering system eliminates the majority of your manual procurement activities so you can focus on customer-facing initiatives.

- ♦ Browse through our online catalog
- ♦ Create custom order guides
- ♦ Search our inventory with pricing
- ♦ Set pars and sequences
- ♦ Create reports on usage trends, order history
- ♦ Order at your convenience



## Order By Phone

***800-649-9827***

During office hours, our friendly staff will take your order. After business hours, place your order using our touchtone ordering system.

## Order By Fax

***508-394-0992***

## Email Your Order

***orders@ringbroswholesale.com***

# Ordering

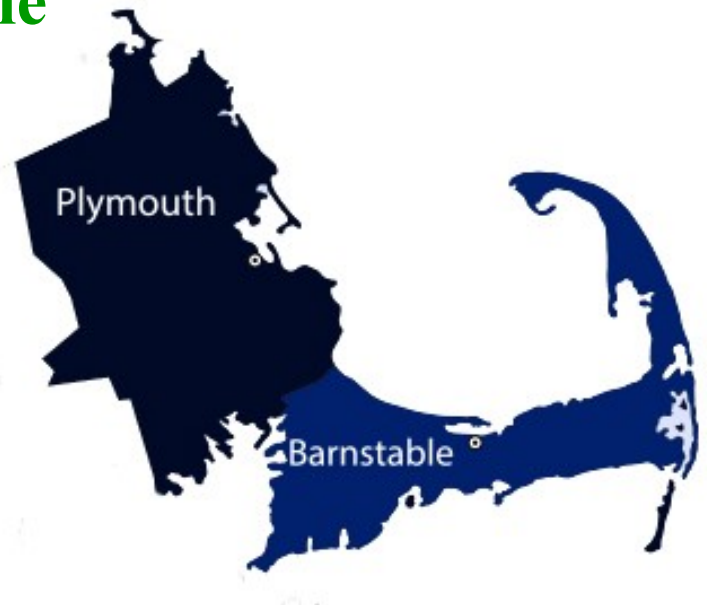


## New Accounts

To open an account with us or to obtain wholesale pricing, please call, email or fill out our credit application found on our website. A representative will follow up with you immediately.

## Delivery Area and Schedule

Our delivery area is Cape Cod and Southeastern Massachusetts. Deliveries are made seven days per week to most locations.



## Payment

Payment terms will be established when you open your account with us. To apply for 30 days terms, please fill out our online credit application found online or call customer service for more information.



We've partnered with eBizCharge for the convenience of our customers. This allows customers with approved terms to pay by credit card or ach, and apply payments to specific invoices. Please visit our website to register.



# Delivery

# Community Support

## Cape Kids Meals

The mission of Cape Kid Meals is to provide food insecure children with food over the weekends during the school year. Food insecure children are those who are dependent on free breakfast and lunch programs in the public schools.



Ring Bros. Wholesale works with Cape Kids Meals and our retail store to provide over 1000 pieces of fruit every week to these food insecure children on weekends throughout the school year.

In 2020 the pandemic drastically impacted children who rely on Cape Kid's Meals' food bags for the weekend. This created a challenge for both volunteers in the program and student access to the food. To solve this, remote only students are provided food bags at "grab and go" sites around the Cape.

Ring Bros. Marketplace hosts annual fundraisers throughout the year to help support Cape Kids Meals. Customers donate to this cause and in 2020 raised \$9,708 to support the need.

## Dennis Yarmouth Cardinals

Ring Bros. Marketplace is proud to sponsor the Cardinals, a minors team that plays in the Dennis Yarmouth Baseball League. Our sponsorship provides the team with uniforms but, more importantly, helps keep tuition down, giving every child the opportunity to play.



# Community



# ***Food Safety Program Goals***

At Ring Bros. Wholesale food safety is an integral part of our entire operation. It also includes non-production items such as training of employees and training materials.

The goal of the food safety program is to institute a proactive system for its operation whereby any potential product hazards are anticipated and controlled from product reception through distribution. Food safety and quality control is the responsibility of all the employees of Ring Bros. Wholesale, affiliated services and product providers. Management has provided the tools and established guidelines for producing safe, wholesome, quality products. All employees are accountable for consistently maintaining these standards.

The food safety program has been established with the help of the company officers. Although the burden of food safety and quality control is in the hands of management and supervisors, all employees serve as inspectors when product moves through their area. Ring Bros. Wholesale's employees are authorized to hold or reject product found to be out of compliance, subject to the evaluation and final approval of authorized management.

## **What Does The Program Consist Of?**

The purpose of this food safety plan is to help ensure that environmental conditions and practices are sound and reduce the risk of unsafe products.

This plan is designed to address specific points of our process, according to the type of product we market, and the operations associated with the storage, preparation and display of the product.



# *Food Safety*



## Testimonials

“From an excellent sales team, quality products (fresh and specialty) and a reliable delivery team, Ring Bros. Wholesale continues to set the bar high in foodservice. You can’t ask for anything better than having the availability to source local products while supporting a great local business.”

**Chris Kolwicz**

*Executive Chef at Wychmere Beach Club, Harwich Port*

“In my 30 plus years in catering industry I've been working with Ring Bros. and their team for over 20 years. I find their sales team and product quality excellent. My client requests for specialty items were frequent and Ring Bros were always able to procure it or hand pick produce upon request. Because of their personalized service and attention to detail, I will always be loyal to Ring Bros. Wholesale.”

**Jennifer Mentzer**

*General Manager at Wayside Inn, Chatham*

"The produce is always fresh, deliveries dependable and as promised, and the sales team makes it happen."

**Eric Bishoff**

*Executive Chef at Quarterdeck Restaurant, Falmouth*

"The expansive Asian selection allows me to create without limits."

**John Wilson**

*Executive Chef and Owner at Water Street Kitchen, Woods Hole*

"Ring Bros. works with local farmers to source produce my customers expect."

**Maria Pollio**

*Executive Chef at Del Mar Bar & Bistro, Chatham*



# Contents

1	Fruit
6	Vegetables
17	Organic Veg
18	Organic Fruit
19	Dairy
23	Cheese
25	Beverages
31	Specialty Foods
43	Prepared Foods
47	Frozen
51	Bread

# LOCAL PRODUCE

## Thacher Cranberries

We work with this local grower in the fall when cranberries are abundant. Thacher Farms doesn't pick their berries early but instead waits until they are ripe, and bright red. These cranberries get delivered to our warehouse in wooden crates weekly from the grower.



**FRESH CRANBERRIES**



**Locally Grown in Harwich, MA**

## Wilson Farm

Founded in 1884 in Lexington, Massachusetts, Wilson Farm is a family owned and operated farm and farm stand. Today, Wilson Farm consists of over 500 acres of farmland, two retail farm stands, an open-air nursery and garden center, and a state-of-the-art greenhouse.



**Locally Grown  
in Lexington, MA**

**APPLES (SEASONAL)  
PLANTS AND FLOWERS**

**Behind the Cape's Best Restaurants**



**Since 1925**

**FRESH. LOCAL. DELIVERED DAILY.**

[www.ringbroswholesale.com](http://www.ringbroswholesale.com) | 800-649-9827 | 485 Route 134 | South Dennis, MA 02660





# LOCAL PRODUCE

## Fresh Valley Foods

Fresh Valley Foods Co is a processor of fresh cut fruits and vegetables for the New England and New York Metro areas. They are based out of Haverhill, MA and cut daily to ensure freshness. All products are all natural and contain no preservatives.

### ALL NATURAL FRUIT SALAD

(Cantaloupe, Honeydew, Pineapple, Grapes, Orange, Water, Sugar, Citric Acid, Ascorbic Acid)  
8 LB TUB



Locally Cut in Haverhill, MA

## Crow Farm

The forty-acre farm is run by Howard Crowell his son Paul, and grandson Jason. Crow Farm offers a wide variety of herbs,, vegetables, and fruit. They are one of the only farms on Cape Cod to grow their own apples (15 unique varieties!), pears, peaches, and sweet corn.

### PEPPERS AND ZUCCHINI TOMATOES



Locally Grown in Sandwich, MA

Behind the Cape's Best Restaurants



Since 1925

# FRESH. LOCAL. DELIVERED DAILY.

www.ringbroswholesale.com | 800-649-9827 | 485 Route 134 | South Dennis, MA 02660

**MANGOES**

MANGOES

CASE / EACH

**MELONS**

MELONS, CANTALOUPE 12 CT

CASE / EACH

MELONS, CASABA 6 CT

CASE / EACH

MELONS, CRENSHAW 6 CT

CASE / EACH

MELONS, HONEYDEW 6 CT

CASE / EACH

MELONS, NATIVE **LOCAL**

CASE / EACH

MELONS, PERSIAN 5 CT

CASE / EACH

MELONS, WATERMELON SEEDLESS

EACH

**MINIOLAS**

MINIOLAS 56 CT

CASE / EACH

**NECTARINES**

NECTARINES, NATIVE 20LB

CASE / LB

NECTARINES, WHITE 20 LB

CASE / LB

NECTARINES, YELLOW 20 LB

CASE / LB

**ORANGES**

ORANGES, BLOOD 44 CT

CASE / EACH

ORANGES, CALIFORNIA 56 CT / 88 CT / 113 CT

CASE / EACH

ORANGES, CARA CARA 44 CT

CASE / EACH

ORANGES, FLORIDA 80 CT / 100 CT

CASE / EACH

ORANGES, TEMPLE

CASE / EACH

**PAPAYAS**

PAPAYAS, GREEN 12 CT

CASE

PAPAYAS, MARADOL 12 CT

CASE / EACH

**PASSION FRUIT**

PASSION FRUIT 18 CT

CASE / EACH

**PEACHES**

PEACHES, EASTERN 2 1/4" / 2 1/2" / 2 3/4" 25 LB

CASE / LB

PEACHES, NATIVE 20 LB

CASE / LB

PEACHES, YELLOW 20 LB TRAY PACK

CASE / LB

PEACHES, WHITE 20 LB TRAY PACK

CASE / LB

**PEARS**

PEARS, ANJOU 90 CT / 100 CT / 150 CT

CASE / EACH

PEARS, ASIAN 16 CT

CASE / EACH

PEARS, BARTLETT 100 CT

CASE / EACH

PEARS, BOSC 100 CT

CASE / EACH

PEARS, QUINCE

CASE / EACH

PEARS, RED 40 CT

CASE / EACH

PEARS, SECKELL 117 CT

CASE / EACH

**PINEAPPLE**

PINEAPPLES, BABY

CASE

PINEAPPLES, GOLDEN RIPE 7 CT

CASE / EACH

**PLUMS**

PLUMS, BLACK

CASE / LB

PLUMS, EMPRESS

CASE / LB

PLUMS, PRUNE

CASE / LB

PLUMS, RED

CASE / LB

PLUMS, PLUOT

CASE / LB

**POMEGRANATES**

POMEGRANATES 24 CT

CASE / EACH

**RHUBARB**

RHUBARB 15 LB / 20 LB

CASE / LB

**STAR FRUIT**

STAR FRUIT 25 CT

CASE

**TANGELOS**

TANGELOS 56 CT

CASE / EACH

**TANGERINES**

TANGERINES 80 CT

CASE / EACH



# LOCAL PRODUCE



## Philbin Orchards

Philbin Orchards is a small farm which produces some of the best local produce available. We have been working with the Philbin family for about 35 years. One of the Philbin's signature products are their famous peaches which are sweet, and perfect.

**CORTLAND, MCINTOSH, MACOUN & SPENCER APPLES  
PEACHES  
GREEN PEPPERS  
SUMMER & ZUCCHINI SQUASH**



**Locally Grown in Sterling, MA**



## Backyard Farms

Fresh tomatoes grown in New England, year-round. What's the secret to our freshness?

Backyard Farms tomatoes stay on the vine until the last

possible second to ensure maximum ripeness. Our team of personal gardeners care for their rows of tomatoes with a sense of pride, and pick them only when red and ripe.

**CLUSTER TOMATOES  
PEARLS "COCKTAIL" TOMATOES**



**Locally Grown in Madison, ME**

Behind the Cape's Best Restaurants



Since 1925

**FRESH. LOCAL. DELIVERED DAILY.**

www.ringbroswholesale.com | 800-649-9827 | 485 Route 134 | South Dennis, MA 02660

# LOCAL PRODUCE

## Confreda Farms

The Confreda family began farming in 1922. Farming just over 400 acres of land in Cranston and Warwick, their operations represent one of the oldest and largest commercial vegetable farms in the state of Rhode Island. Through the years, the Confreda family has worked to provide customers with high quality produce, always expanding their efforts to bring customers into the family farm experience.



### CORN SQUASH



Locally Grown in Cranston, RI

Behind the Cape's Best Restaurants



Since 1925

**FRESH. LOCAL. DELIVERED DAILY.**

[www.ringbroswholesale.com](http://www.ringbroswholesale.com) | 800-649-9827 | 485 Route 134 | South Dennis, MA 02660

# LOCAL PRODUCE

## PIONEER VALLEY GROWERS ASSOCIATION

### Pioneer Valley Growers Association

The Pioneer Valley Growers Association is a cooperative of farmers located in the Pioneer Valley of Western Massachusetts. The farmland in the Pioneer Valley has some of the richest soil in the world. This, combined with state of the art cooling technology, allows our farmers to produce the finest looking and best tasting vegetables around.

APPLES  
BLUEBERRIES / STRAWBERRIES  
BOK CHOY / CHINESE CABBAGE  
GREEN BEANS  
BUNCHED & CUT BEETS  
RED / GREEN CABBAGE  
NAPPA / SAVOY CABBAGE  
BUNCHED / CUT CARROTS  
SWEET CORN  
CUCUMBERS  
EGGPLANT  
CILANTRO / DILL  
GREEN KALE  
LEEKs  
LEAF LETTUCE  
ROMAINE LETTUCE  
RED / YELLOW ONIONS  
PARSNIPS  
SUGAR SNAP / ENGLISH PEAS  
JALAPENO / CUBAN PEPPERS  
GREEN PEPPERS  
POTATOES / RAMPS  
PUMPKINS / GOURDS  
BUTTERNUT / FALL SQUASH  
SUMMER / ZUCCHINI SQUASH  
GREEN / RED SWISS CHARD  
TOMATOES  
WHITE / PURPLE TOP TURNIPS



Locally Grown in Pioneer Valley, MA

Behind the Cape's Best Restaurants



Since 1925

**FRESH. LOCAL. DELIVERED DAILY.**

www.ringbroswholesale.com | 800-649-9827 | 485 Route 134 | South Dennis, MA 02660



**ARTICHOKES**

ARTICHOKES 24 CT / 30 CT

CASE / EACH

ARTICHOKES, BABY

CASE / PKG

**ASIAN VEGETABLES**

ASIAN, BABY BOK CHOY 30 LB

CASE / LB

ASIAN, BOK CHOY 30 LB

CASE / LB

ASIAN, BOK CHOY **LOCAL** 30 LB

CASE / LB

ASIAN, NAPA CABBAGE 30 LB / 40 LB

CASE / LB

ASIAN, NAPA CABBAGE **LOCAL** 30 LB

CASE / LB

**ASPARAGUS**

ASPARAGUS, 11 LB, 28LB

CASE / LB

ASPARAGUS, JUMBO 11 LB

CASE / LB

ASPARAGUS **LOCAL**

CASE / LB

ASPARAGUS, PEELED JUMBO *SPECIAL ORDER ITEM*

CASE

ASPARAGUS, PURPLE 11LB *SPECIAL ORDER ITEM*

CASE / LB

ASPARAGUS, WHITE 11LB *SPECIAL ORDER ITEM*

CASE / LB

**BEANS**

BEANS, FAVA 24 LB

CASE / LB

BEANS, GREEN 24 LB

CASE / LB

BEANS, GREEN **LOCAL** 25 LB

CASE / LB

BEANS, GREEN SNIPPED 2/5 LB BAG

CASE / EACH

BEANS, HERICOT VERTS 5LB BOX

CASE

BEANS, POLE 24 LB

CASE / LB

BEANS, SEA 10 LB

CASE / LB

BEANS, SHELL 24 LB

CASE / LB

BEANS, SUNSHINE MEDLEY 2/5 LB BAG

CASE / EACH

BEANS, WAX 24 LB

CASE / LB

BEANS, WAX SNIPPED 2/5 LB BAG

CASE / EACH

**BEETS**

BEETS, BABY 24 CT

CASE / EACH

BEETS, BABY CHIOGGA 24 CT

CASE / EACH

BEETS, BABY GOLD 24 CT

CASE / EACH

BEETS, BUNCHED 12 CT

CASE / BUNCH

BEETS, BUNCHED **LOCAL** 12 CT

CASE / BUNCH

BEETS, CHIOGGA 24 CT CUT

CASE / EACH

BEETS, CUT 25 LB

CASE / LB

BEETS, CUT **LOCAL** 25 LB

CASE / LB

BEETS, CUT YELLOW 25 LB

CASE / LB

BEET GREENS 10 LB

CASE / LB

**BROCCOLI**

BROCCOLI CROWNS 20 LB

CASE / LB

BROCCOLI FLORETTES 4/3LB

CASE / LB

BROCCOLI SLAW 5LB

CASE / LB

BROCCOLI RABE 20 LB, 10 LB

CASE / LB

BROCCOLINI 18 CT BUNCH

CASE / EACH

**CABBAGE**

CABBAGE, GREEN 50 LB

CASE / EACH

CABBAGE, GREEN **LOCAL** 50 LB

CASE / EACH

CABBAGE, RED 50 LB

CASE / LB

CABBAGE, RED **LOCAL** 50 LB

CASE / EACH

CABBAGE, RED SHREDDED 5 LB BAG

EACH

CABBAGE, SAVOY 50 LB

CASE / LB

CABBAGE, SAVOY **LOCAL** 50 LB

CASE / EACH

**CARROTS**CARROTS, BABY BUNCHED 24 CT *SPECIAL ORDER ITEM*

CASE / EACH

CARROTS, BABY PEELED WITH TOPS 5 LB

CASE

CARROTS, BABY RAINBOW PEELED 5 LB

EACH

CARROTS, BUNCHED 24 CT

CASE / BUNCH

CARROTS, BUNCHED **LOCAL** 24 CT

CASE / BUNCH

CARROTS, CELLO 48/1 LB PKG

CASE / EACH

CARROTS, CUTS 25 LB

CASE / LB

CARROTS, DICED 5 LB

CASE / LB

CARROTS, STICKS 4/5 LB BAG

EACH

CARROTS, CHEF 50 LB

CASE / LB

CARROTS, MINI 30/1 LB PKG

CASE / EACH

CARROTS, MINI SLIMS 25 LB BAG

EACH

CARROTS, PEELED 25 LB

CASE

CARROTS, SHREDDED 5 LB

EACH

CARROTS, SNACK SIZE (INSTITUTIONAL) T-200

CASE



**CAULIFLOWER**

CAULIFLOWER 12 CT  
CAULIFLOWER, BABY 24 CT  
CAULIFLOWER, BABY PURPLE 24 CT  
CAULIFLOWER, FLORETTES 4/3 LB  
CAULIFLOWER, ROMANESCO 12 CT  
CAULIFLOWER, ORANGE / PURPLE 12 CT

CASE / EACH  
CASE  
CASE  
EACH  
CASE / EACH  
CASE / EACH

**CELERY**

CELERY, DICED 5 LB BAG  
CELERY, HEARTS 12 CT PKG / 30/8 OZ PKG  
CELERY, ROOT 20 LB  
CELERY, SLEEVED 24 CT  
CELERY, STICKS 5 LB BAG  
CELERY, 24 CT

EACH  
CASE / EACH  
CASE / LB  
CASE  
EACH  
CASE / EACH

**CHICORY**

CHICORY 12 CT

CASE / EACH

**SLAW**

BROCCO-SLAW 5 LB BAG  
COLE SLAW, SHREDDED 4/5 LB BAG  
COLE SLAW, DICED 4/5 LB BAG

EACH  
CASE / EACH  
CASE / EACH

**COLLARD GREENS**

COLLARD GREENS 12 CT  
COLLARD GREENS **LOCAL** 22 LB

CASE / LB  
CASE / BUNCH

**CORN**

CORN 48 CT  
CORN **LOCAL** 60 CT  
CORN, SHUCKED 24 CT **PRE-ORDER**

CASE / EACH  
CASE / EACH  
CASE / EACH

**CUCUMBERS**

CUCUMBERS **LOCAL**  
CUCUMBERS, ENGLISH 12 CT  
CUCUMBERS, PICKLING 40 LB  
CUCUMBERS, PICKLING **LOCAL** 22 LB / 50 LB  
CUCUMBERS, SUPER SELECT 72 CT

CASE / EACH  
CASE / EACH  
CASE / LB  
CASE / LB  
CASE / EACH

**EDIBLE FLOWERS**

EDIBLE FLOWERS, MIXED 8 OZ  
EDIBLE FLOWERS, NASTURTIUM 8 OZ  
EDIBLE FLOWERS, ORCHIDS 50 CT  
EDIBLE FLOWERS, PANSIES 8 OZ

CASE  
CASE  
CASE  
CASE

**EGGPLANT**

EGGPLANT 18 CT / 24 CT  
EGGPLANT **LOCAL** 25LB  
EGGPLANT, ITALIAN 11 LB  
EGGPLANT, JAPANESE 24 LB  
EGGPLANT, WHITE 11 LB

CASE / EACH  
CASE / EACH  
CASE / LB  
CASE / LB  
CASE / LB

**ENDIVE**

ENDIVE, BELGIAN 10 LB  
ENDIVE, RED 3 KILO

CASE / LB  
CASE / LB

**ESCAROLE**

ESCAROLE 12 CT

CASE / EACH

**FENNEL**

FENNEL 24 CT BULB  
FENNEL, BABY BULB 24 CT

CASE / EACH  
CASE / EACH

**FIDDLE HEADS**

FIDDLE HEADS 5 LB / 10 LB (SEASONAL)

CASE / LB

**GARLIC**

GARLIC, BLACK PEELED 1 LB  
GARLIC, BLACK WHOLE 1 LB  
GARLIC, ELEPHANT 10 LB  
GARLIC, LOOSE 30 LB  
GARLIC, PEELED *CALIFORNIA* 4/1 GALLON  
GARLIC, PEELED *CHINESE* 4/1 GALLON  
GARLIC, CHOPPED IN OIL 12/32 OZ JAR

EACH  
EACH  
EACH  
CASE / LB  
CASE / EACH  
CASE  
CASE / EACH

**GINGER ROOT**

GINGER ROOT 30 LB

CASE / LB

**GOURDS**

GOURDS **LOCAL** 15 LB

CASE / LB

**HERBS**

HERBS, BASIL  
HERBS, BASIL 3 CT CELLO  
HERBS, BASIL THAI  
HERBS, BAY LEAVES

1/4LB or 1LB CRATE  
CASE  
1/4LB or 1LB  
1/4LB or 1LB





HERBS, BAY LEAVES 3 CT CELLO  
HERBS, CHERVIL  
HERBS, CILANTRO 30 CT  
HERBS, CILANTRO **LOCAL** 30 CT  
HERBS, CILANTRO 3 CT CELLO  
HERBS, CHIVES (IMPORTED) 1 KILO  
HERBS, CHIVES 3 CT CELLO  
HERBS, DILL 1/4 LB, 24 CT CRATE  
HERBS, DILL **LOCAL** 24 CT  
HERBS, DILL 3 CT CELLO  
HERBS, MARJORAM  
HERBS, MINT 12 CT  
HERBS, MINT (ORGANIC) 3 CT CELLO  
HERBS, LEMON VERBENA  
HERBS, OREGANO  
HERBS, OREGANO 3 CT CELLO  
HERBS, PARSLEY CURLEY 60 CT  
HERBS, PARSLEY FLAT LEAF 60 CT  
HERBS, ROSEMARY  
HERBS, ROSEMARY 3 CT CELLO  
HERBS, SAGE  
HERBS, SAGE 3 CT CELLO  
HERBS, SORREL  
HERBS, SUMMER SAVORY  
HERBS, WINTER SAVORY  
HERBS, TARRAGON  
HERBS, TARRAGON 3 CT CELLO  
HERBS, THYME  
HERBS, THYME 3 CT CELLO  
HERBS, THYME LEMON

**HORSERADISH**

HORSERADISH, FRESH 5 LB

**KALE**

KALE, FLOWERING 24 CT  
KALE, GREEN 12 CT  
KALE, GREEN **LOCAL** 22 LB

**LEEKs**

LEEKs 12 CT  
LEEKs **LOCAL** 12 CT

**LETTUCE**

LETTUCE, ARTISAN 12/4 CT  
LETTUCE, ARTISAN BULK 8 LB  
LETTUCE, ARTISAN ROMAINE 24 CT  
LETTUCE, BABY ARUGULA 3 LB  
LETTUCE, BABY BIBB 1/2 LB BAG  
LETTUCE, BABY ICEBURG 40 CT  
LETTUCE, BABY RED OAK 2 LB  
LETTUCE, BABY RED ROMAINE 1/2 LB BAG  
LETTUCE, BOSTON 24 CT  
LETTUCE, BOSTON **LOCAL** 24 CT  
LETTUCE, CELLO 24 CT  
LETTUCE, FRISEE 12 CT  
LETTUCE, GREEN LEAF 24 CT  
LETTUCE, GREEN LEAF **LOCAL** 24 CT  
LETTUCE, GREEN LEAF CROWNS 10 LB  
LETTUCE, GREEN OAK 1/2 LB BAG  
LETTUCE, HYDROPONIC 12 CT  
LETTUCE, ICEBERG 24 CT  
LETTUCE, ICEBERG SHREDDED 4/5 LB BAG  
LETTUCE, LOLLA ROSSA 2LB BAG *SPECIAL ORDER ITEM*  
LETTUCE, MACHE *SPECIAL ORDER ITEM*  
LETTUCE, MIZUNA *SPECIAL ORDER ITEM*  
LETTUCE, RADICCIO 9 CT  
LETTUCE, RED LEAF 24 CT  
LETTUCE, RED LEAF **LOCAL** 24 CT  
LETTUCE, RED OAK 1/2 LB BAG *SPECIAL ORDER ITEM*  
LETTUCE, ROMAINE 24 CT  
LETTUCE, ROMAINE CHOPPED 4/5 LB BAGS  
LETTUCE, ROMAINE CUT 4/5 LB BAGS  
LETTUCE, ROMAINE CROWNS 10 LB



CASE  
1/4LB  
CASE / BUNCH  
CASE / BUNCH  
CASE  
CASE / BUNCH  
CASE  
CASE / BUNCH  
CASE  
1/4LB  
CASE / BUNCH  
CASE  
CASE / BUNCH  
1/4LB or 1LB  
CASE  
CASE / BUNCH  
CASE / BUNCH  
1/4LB or 1 LB  
CASE  
1/4LB or 1LB  
CASE  
1/4LB or 1LB  
1/4LB  
1/4LB  
1/4LB  
CASE  
1/4LB or 1LB  
CASE  
1/4LB or 1LB

CASE / LB

CASE / EACH  
CASE / EACH  
CASE / BUNCH

CASE / BUNCH  
CASE / BUNCH

CASE / EACH  
CASE  
CASE  
CASE  
CASE  
CASE  
CASE  
CASE / EACH  
CASE / EACH  
CASE / EACH  
CASE / EACH  
CASE / EACH  
CASE / EACH  
CASE  
CASE / EACH  
CASE / EACH  
CASE / EACH  
CASE  
CASE  
CASE  
CASE / EACH  
CASE / EACH  
CASE / EACH  
CASE  
CASE / EACH  
CASE  
CASE  
CASE



# LOCAL PRODUCE

## Little Leaf Farms

Little Leaf Farms has built the most modern, technologically-advanced greenhouse in the world. Our three-acre greenhouse facility in Devens, Massachusetts is centrally located to bring the freshest and best tasting baby lettuce to New England.

**BABY CRISPY GREEN LEAF  
RED & GREEN LEAF  
SPRING MIX (FOODSERVICE)**



**Locally Grown  
in Devens, MA**



the local lettuce locals love.



## Olivia's Organics

Enjoy delicious produce with Olivia's Organics. Offering a pleasing and convenient variety of fresh organic products including tender leaf salads, and cooking greens - it's how we add freshness to your every meal!

**TENDER LEAF SALADS  
BABY GREENS  
POWER GREENS**



**Locally Packaged  
in Chelsea, MA**



Behind the Cape's Best Restaurants



Since 1925

**FRESH. LOCAL. DELIVERED DAILY.**

www.ringbroswholesale.com | 800-649-9827 | 485 Route 134 | South Dennis, MA 02660



LETTUCE, ROMAINE HEARTS 12 CT PKG	CASE / EACH
LETTUCE, SWEET GEM 24 CT	CASE
LETTUCE, TANGO 2 LB BAG	CASE
LETTUCE, TREVISO 12CT	CASE / EACH

#### **LETTUCE MIX / VEGETABLE MIX**

LETTUCE MIX, BABY GREEN LEAF <b>LOCAL (LITTLE LEAF)</b> 8/4 OZ	CASE / EACH
LETTUCE MIX, GREEN & RED LEAF MIX <b>LOCAL (LITTLE LEAF)</b> 8/4 OZ	CASE / EACH
LETTUCE MIX, SPRING MIX <b>LOCAL (LITTLE LEAF)</b> 3 LB	CASE / EACH
LETTUCE MIX, BABY ARUGULA (OLIVIAS ORGANICS) 8/5 OZ	CASE / EACH
LETTUCE MIX, BABY KALE (OLIVIAS ORGANICS) 8/5 OZ	CASE / EACH
LETTUCE MIX, BABY SPINACH (OLIVIAS ORGANICS) 8/5 OZ	CASE / EACH
LETTUCE MIX, SPRING MIX (OLIVIAS ORGANICS) 8/5 OZ	CASE / EACH
LETTUCE MIX, POWER GREENS (OLIVIAS ORGANICS) 8/5 OZ	CASE / EACH
LETTUCE MIX, ARCADIAN PETITE GREENS 4/3 LB	CASE / EACH
LETTUCE MIX, 4/5 LB BAG	CASE / EACH
LETTUCE MIX, MESCLUN 3 LB BAG	CASE
LETTUCE MIX, MESCLUN (WITHOUT RADICCIO / FRISEE) 3 LB BAG	CASE
LETTUCE MIX, MESCLUN (ORGANIC)	CASE
LETTUCE MIX, PARKWAY 4/5 LB	CASE
LETTUCE MIX, ROMAINE & ICEBURG 4/5 LB	CASE

#### **MICRO GREENS / PETITE GREENS**

MICRO GREENS, ARUGULA <b>LOCAL</b> 8 OZ	EACH
MICRO GREENS, BASIL 8 OZ	EACH
MICRO GREENS, BULLS BLOOD 8 OZ	EACH
MICRO GREENS, CELERY 8 OZ	EACH
MICRO GREENS, CILANTRO <b>LOCAL</b> 8 OZ	EACH
MICRO GREENS, RAINBOW / CHEF'S BLEND <b>LOCAL</b> 8 OZ	EACH
MICRO GREENS, RED AMARANTH 8 OZ	EACH
MICRO GREENS, RED MUSTARD 8 OZ	EACH
MICRO GREENS, SAKURA MIX 8 OZ	EACH
MICRO GREENS, SHISO LEAVES 8 OZ	EACH
PETITE GREENS, CILANTRO SPROUT 8 OZ	EACH
PETITE GREENS, POPCORN SHOOT 8 OZ <b>SPECIAL ORDER</b>	EACH
PETITE GREENS, PEA SHOOTS <b>LOCAL</b> 1 LB	EACH
PETITE GREENS, SHISO LEAVES 8 OZ	EACH



#### **MUSHROOMS**

MUSHROOMS, BUTTON / MEDIUM / LARGE / SLICED 10 LB	CASE / LB
MUSHROOMS, 12/8 OZ CELLO PKG	CASE / EACH
MUSHROOMS, 12/8 OZ SLICED CELLO PKG	CASE / EACH
MUSHROOMS, BABY BELLA 10 OZ	CASE
MUSHROOMS, CHANTERELLE 3 LB / 5 LB <b>SPECIAL ORDER</b>	CASE / LB
MUSHROOMS, CRIMINI 5 LB	CASE / LB
MUSHROOMS, ENOKI 12CT PKG	CASE / EACH
MUSHROOMS, HEDGEHOG <b>SPECIAL ORDER</b>	CASE / LB
MUSHROOMS, HON SIMEJI (BEECH) PKG	CASE / EACH
MUSHROOMS, KING OYSTER 3 LB	CASE / LB
MUSHROOMS, MAITAKE 3 LB	CASE
MUSHROOMS, MOREL 6 LB <b>SPECIAL ORDER</b>	CASE / LB
MUSHROOMS, OYSTER 3 LB	CASE / LB
MUSHROOMS, PORCINI DRIED 1 LB	CASE / LB
MUSHROOMS, PORTABELLA 5 LB	CASE / LB
MUSHROOMS, PORTABELLA CAPS 5 LB	CASE
MUSHROOMS, SHITAKE 3 LB	CASE / LB
MUSHROOMS, SILVER DOLLAR 10 LB	CASE / LB

#### **MUSTARD GREENS**

MUSTARD GREENS 12 CT	CASE / BUNCH
----------------------	--------------

#### **OKRA**

OKRA 20 LB	CASE / LB
------------	-----------

#### **ONIONS**

ONIONS, 2 LB / 24 CT BAG	CASE / EACH
ONIONS, BOILER 25 LB	CASE / LB
ONIONS, CIPOLLINI 10 LB BAG	CASE / LB
ONIONS, CIPOLLINI (PEELED) JAR	EACH
ONIONS, COMMON 50 LB	CASE / LB
ONIONS, COLOSSAL 50 LB	CASE / LB
ONIONS, DICED BAG / DICED RED BAG 5 LB	EACH
ONIONS, GREEN (ICELESS) 48 CT BUNCH	CASE / EACH
ONIONS, PEARL PKG	CASE / EACH
ONIONS, PEARL PEELED 5 LB JAR	EACH
ONIONS, PEARL RED 12 PKG	CASE / EACH

ONIONS, PEELED 25 LB  
 ONIONS, RED **LOCAL** 25 LB  
 ONIONS, RED MEDIUM / JUMBO 25 LB  
 ONIONS, RED PEELED 25 LB  
 ONIONS, SPANISH 50 LB  
 ONIONS, SPANISH RINGS 5 LB BAG  
 ONIONS, SPANISH STRIPS 5 LB BAG  
 ONIONS, SUPER COLOSSAL 50 LB  
 ONIONS, SWEET 40 LB  
 ONIONS, VIDALIA 40 LB  
 ONIONS, VIDALIA SPRING (BUNCH)  
 ONIONS, WHITE JUMBO 25 LB  
 ONIONS, YELLOW **LOCAL** 10 LB / 25 LB / 50 LB

**PARSNIPS**

PARSNIPS 18 CT PKG  
 PARSNIPS 20 LB LOOSE  
 PARSNIPS 20 LB **LOCAL**

**PEAS**

PEAS, ENGLISH 24 LB  
 PEAS, ENGLISH **LOCAL** 25 LB  
 PEA PODS 10 LB  
 PEA SHOOTS 1 LB **LOCAL**  
 PEA SHOOTS GOLDEN  
 PEAS, SUGAR SNAP 10 LB  
 PEAS, SUGAR SNAP **LOCAL** 10 LB  
 PEA TENDRILS

**PEPPERS**

PEPPERS, ANAHIEM CHILI  
 PEPPERS, ANCHO CHILI  
 PEPPERS, BANANA  
 PEPPERS, CUBANELLE 20 LB  
 PEPPERS, CUBANELLE **LOCAL** 25 LB  
 PEPPERS, GREEN 25 LB  
 PEPPERS, GREEN **LOCAL**  
 PEPPERS, GREEN DICED 5 LB  
 PEPPERS, GREEN STRIPS 5 LB BAG  
 PEPPERS, GUAJILLO CHILI (DRIED)  
 PEPPERS, HABANERO 10 LB  
 PEPPERS, JALAPENO 10 LB  
 PEPPERS, JALAPENO **LOCAL** 10 LB  
 PEPPERS, MINI (IN CLAMSHELL)  
 PEPPERS, ORANGE 11 LB  
 PEPPERS, PABLANO 10 LB  
 PEPPERS, RED 11 LB / 15 LB / 25 LB  
 PEPPERS, RED FRESNO 10 LB  
 PEPPERS, RED STRIPS 5 LB BAG  
 PEPPERS, SERRANO 10 LB  
 PEPPERS, THAI CHILI  
 PEPPERS, YELLOW 11 LB

**PERSIMMONS**

PERSIMMONS, FUYU 17 CT

**POTATOES**

POTATOES, 10/5 LB BAG  
 POTATOES, **LOCAL** 10 LB / 20 LB / 50 LB  
 POTATOES, CALIFORNIA 50 LB  
 POTATOES, CHEF 50 LB  
 POTATOES, DICED 1/2" 30 LB TUB / 3/4" 30 LB TUB  
 POTATOES, FINGERLING 20 LB  
 POTATOES, FINGERLING ASSORTED / PURPLE / RED 20 LB  
 POTATOES, IDAHO 40 CT / 50 CT / 60 CT / 70 CT / 80 CT / 50 LB  
 POTATOES, IDAHO 90 CT / 100 CT / 120 CT / 50 LB  
 POTATOES, PURPLE (A) 50 LB / (B) 50 LB / (C) 50 LB  
 POTATOES, RED BLISS (A) 50 LB / (B) 50 LB / (C, CREAMER) 50 LB  
 POTATOES, RED FANCY (A) 50 LB  
 POTATOES, RED QUARTERED 20 LB TUB  
 POTATOES, RUSSETT 70 CT / 80 CT / 90 CT / 100 CT / 120 CT / 50 LB  
 POTATOES, WHITE FLORIDA A / B  
 POTATOES, WHOLE PEELED 20 LB TUB  
 POTATOES, WHOLE PEELED YUKON GOLD 20 LB TUB  
 POTATOES, YUKON GOLD (A) 50 LB / (B) 50 LB / (C) 50 LB

CASE  
 CASE / LB  
 CASE / LB  
 CASE  
 CASE / LB  
 EACH  
 EACH  
 CASE / LB  
 CASE / LB  
 CASE / LB  
 CASE / EACH  
 CASE / LB  
 CASE / LB

CASE / EACH  
 CASE / LB  
 CASE / LB

CASE / LB  
 CASE / LB  
 CASE / LB  
 EACH  
 CASE  
 CASE / LB  
 CASE / LB  
 LB

LB  
 CASE / LB  
 CASE / LB  
 CASE / LB  
 CASE / LB  
 CASE / LB  
 CASE / LB  
 EACH  
 EACH  
 LB  
 CASE / LB  
 CASE / LB  
 CASE / LB  
 CASE / EACH  
 CASE / LB  
 CASE / LB  
 CASE / LB  
 CASE / LB  
 EACH  
 CASE / LB  
 CASE / LB  
 CASE / LB

CASE / EACH

CASE / EACH  
 CASE / LB  
 CASE / LB  
 CASE / LB  
 EACH  
 CASE / LB  
 CASE / LB  
 CASE / LB  
 CASE / LB  
 CASE / LB  
 CASE / LB  
 CASE / LB  
 CASE / LB  
 CASE / LB  
 EACH  
 CASE / LB  
 CASE / LB  
 EACH  
 EACH  
 CASE / LB







SWISS CHARD, GREEN 12 CT  
 SWISS CHARD, GREEN **LOCAL** 22 LB  
 SWISS CHARD, RED 12 CT  
 SWISS CHARD, RED **LOCAL** 22 LB

**TOFU**

TOFU, FIRM 12 / 1 LB  
 TOFU, EXTRA FIRM 12 / 1 LB

**TOMATOES**

TOMATOES, MEDIUM 6x7 / LARGE 6x6 / X-LARGE 5x6 / 25 LB  
 TOMATOES, BEEF STEAK  
 TOMATOES, CAMPARI  
 TOMATOES, CLUSTER **LOCAL (BACKYARD FARMS)** 11 LB  
 TOMATOES, DICED 5 LB  
 TOMATOES, PEARLS "COCKTAIL" **LOCAL (BACKYARD FARMS)** 7.5 LB  
 TOMATOES, WHOPPER (X-LRG) **LOCAL (BACKYARD FARMS)** 15 LB  
 TOMATOES, CHERRY 12 CT PKG  
 TOMATOES, CHERRY **LOCAL** 12/1 PINT  
 TOMATOES, GRAPE 12/1 PINT  
 TOMATOES, GRAPE YELLOW 12/1 PINT  
 TOMATOES, GREEN 10 LB  
 TOMATOES, HEIRLOOM / HEIRLOOM MIXED **LOCAL** 10 LB  
 TOMATOES, HEIRLOOM MIXED CHERRY 12 CT  
 TOMATOES, HOT HOUSE 15 LB  
 TOMATOES, NATIVE **LOCAL** 20 LB  
 TOMATOES, PEAR 12 CT PKG  
 TOMATOES, PEAR YELLOW 12 CT PKG  
 TOMATOES, ROMA PLUM 25 LB  
 TOMATOES, ROMA PLUM **LOCAL** 25 LB  
 TOMATOES, SWEET 100's 12 / 8OZ PKG  
 TOMATOES, TOMATILLO 10 LB  
 TOMATOES, YELLOW 10 LB / 25 LB  
 TOMATOES, SUN DRIED (HALVED) 5 LB BAG  
 TOMATOES, SUN DRIED (JULIENNE CUT) 5 LB BAG  
 TOMATOES, VINE RIPENED / VINE RIPENED UGLY 25 LB  
 TOMATOES, VINE RIPENED 4x5

**TURNIPS**

TURNIPS, WHITE **LOCAL** 40 LB  
 TURNIPS, PEELED  
 TURNIPS, PURPLE TOP 25 LB  
 TURNIPS, PURPLE TOP **LOCAL** 25 LB  
 TURNIPS, RUTABEGA 50 LB

**UPLAND CRESS****WATERCRESS**

WATERCRESS 12 CT BU  
 WATERCRESS, CELLO 6 CT

**YAMS**

YAMS 40 LB  
 YAMS, PEELED

CASE / BUNCH  
 CASE / BUNCH  
 CASE / BUNCH  
 CASE / BUNCH

CASE / EACH  
 CASE / EACH

CASE / LB  
 CASE / LB  
 CASE / EACH  
 CASE / LB  
 EACH

CASE / LB  
 CASE / LB  
 CASE / EACH  
 CASE / LB  
 CASE / EACH  
 CASE / EACH  
 CASE / LB  
 CASE / LB  
 CASE / EACH  
 CASE / EACH  
 CASE / LB  
 CASE / LB  
 CASE / EACH  
 CASE / LB  
 CASE / LB  
 EACH  
 EACH  
 CASE / LB  
 CASE

CASE / LB  
 LB  
 CASE / LB  
 CASE / LB  
 CASE / LB

CASE

CASE / EACH  
 CASE / EACH

CASE / LB  
 LB



# FRESH CUT

Value added produce such as pre-chopped and prepared vegetables can make meal preparation in the kitchen more convenient, and provide labor saving opportunities.

PEELED JUMBO ASPARAGUS **SPECIAL ORDER**

BROCCOLI FLORETTES 4/3LB

PEELED BUTTERNUT SQUASH 10 LB

BABY PEELED CARROTS WITH TOPS 5 LB

BABY RAINBOW PEELED CARROTS 5 LB

CAULIFLOWER FLORETTES 4/3 LB

SHREDDED ICEBERG LETTUCE 4/5 LB BAG

WHOLE PEELED POTATOES 20 LB TUB

WHOLE PEELED YUKON GOLD POTATOES 20 LB TUB

DICED 1/2" POTATOES 30 LB TUB

DICED 3/4" POTATOES 30 LB TUB

CUT ROMAINE LETTUCE 4/5 LB BAGS

PARKWAY LETTUCE MIX 4/5 LB

ROMAINE & ICEBURG LETTUCE MIX 4/5 LB



Behind the Cape's Best Restaurants



Since 1925

## FRESH. LOCAL. DELIVERED DAILY.

[www.ringbroswholesale.com](http://www.ringbroswholesale.com) | 800-649-9827 | 485 Route 134 | South Dennis, MA 02660



# ORGANIC VEGETABLES

## ORGANIC VEGETABLES - SPECIAL ORDER

ASPARAGUS 11 LB	CASE / LB
AVOCADOES	EACH
BEANS, GREEN 25 LB	CASE / LB
BEETS, GOLD BUNCH 24 CT	CASE / BUNCH
BEETS, RED BUNCH 24 CT	CASE / BUNCH
BOK CHOY 35 LB	CASE / LB
BROCCOLI, CROWNS 20 LB	CASE / LB
BROCCOLINI 18 CT	CASE / BUNCH
BRUSSEL SPROUTS 10 LB	CASE / LB
CABBAGE, GREEN 40 LB	CASE / LB
CARROTS, CELLO 24/2 LB	CASE / PKG
CARROTS, JUMBO CUT 25 LB	CASE / LB
CARROTS, MINI 24/11 LB	CASE / PKG
CAULIFLOWER 12 CT	CASE / HEAD
CUCUMBERS 36 CT	CASE / EACH
DANDELION 12 CT	CASE / BUNCH
ENDIVE, BELGIAN 11 LB	CASE / LB
HERBS (ASSORTED VAR) 3 CT CELLO	CASE
KALE, GREEN 24 CT	CASE / BUNCH
LETTUCE, GREEN LEAF 24 CT	CASE / HEAD
LETTUCE, CELLO ICEBRG 12CT	CASE / HEAD
LETTUCE, RADICCHIO 12-15CT	CASE / HEAD
LETTUCE, RED LEAF 24 CT	CASE / HEAD
LETTUCE, ROMAINE 24 CT	CASE / HEAD
LETTUCE, ROMAINE HRT 12/3C	CASE / PKG
LETTUCE, SPRING MIX 3 LB	CASE
MUSHROOMS, CRIMINI 5 LB	CASE / LB
MUSHROOMS, PORTABEL 5 LB	CASE
MUSHROOMS, SHIITAKE 3 LB	CASE
MUSHROOMS, WHT MED 10LB	CASE / LB
MUSHROOMS, WHT LG 10 LB	CASE / LB
ONIONS, JUMBO SPANISH 40 LB	CASE / LB
PARSLEY, CURLEY 30 CT	CASE / BUNCH
PARSLEY, FLAT LEAF 30 CT	CASE / BUNCH
PEAS, SNOW 10 LB	CASE / LB
PEAS, SUGAR SNAP 10 LB	CASE / LB
PEPPERS, GREEN LG / XLG	CASE / LB
PEPPERS, RED 11 LB	CASE / LB
PEPPERS, YELLOW 11 LB	CASE / LB
POTATOES, 70CT RUSSET 50 LB	CASE / LB
POTATOES, 90CT RUSSET 50 LB	CASE / LB
SCALLIONS 48 CT	CASE / BUNCH
SHALLOTS 10 LB	CASE / LB
SPINACH, BABY 4 LB	CASE
SQUASH, SUMMER 20 LB	CASE / LB
SQUASH, ZUCCHINI 24 LB	CASE / LB
SPROUTS, ALFALFA 12/4 OZ	CASE / PKG
SPROUTS, BEAN 6/4 OZ	CASE / PKG
SWISS CHARD, RAINBOW 24 CT	CASE / BUNCH
TOMATOES, 2 LAYER 20 LB	CASE / LB
TOMATOES, GRAPE 12/16 OZ	CASE / PKG
TOMATOES, CLUSTER 11 LB	CASE / LB
TOMATOES, ROMA PLUM 25 LB	CASE / LB
YAMS, GARNET 40 LB	CASE / LB

**PLEASE ALLOW 48 HOURS  
LEAD TIME FOR ALL ORGANIC  
FRUIT & VEGETABLES**



*There are many reasons to buy organic. First, it is better for the environment. No pesticides means healthier soil, water, and wildlife. Buying organic supports small farmers. Organic farmers can earn a fairer price for organic produce compared to factory farming. Organic farming is good for biodiversity.*

*Organic farmers are growing a wide variety of non-genetically modified (non-GMO) fruits and vegetables.*

# ORGANIC FRUIT

## ORGANIC FRUIT - SPECIAL ORDER

APPLES, GALA	CASE / EACH
APPLES, GRANNY SMITH	CASE / EACH
BANANAS	CASE / LB
BLUEBERRIES 6 OZ	CASE / PKG
GRAPES, GREEN	CASE / LB
GRAPES, RED	CASE / LB
KIWI FRUIT 33 CT	CASE / EACH
LEMONS 95 CT	CASE / EACH
LIMES 1LB BAG	CASE / BAG
MANGOES	CASE / EACH
ORANGES, NAVEL 72 CT	CASE / EACH
PEARS, ANJOU/BARTLT 80 CT	CASE / EACH
PINEAPPLES 5 CT	CASE / EACH
RASPBERRIES 1/2 PINT	CASE / PKG
STRAWBERRIES 1 LB	CASE / PKG



**PLEASE ALLOW 48 HOURS LEAD TIME FOR ALL ORGANIC FRUIT & VEGETABLES**

Conventional farmers	Organic farmers
Apply chemical fertilizers to promote plant growth.	Apply natural fertilizers, such as manure or compost, to feed soil and plants.
Spray insecticides to reduce pests and disease.	Use beneficial insects and birds, mating disruption or traps to reduce pests and disease.
Use chemical herbicides to manage weeds.	Rotate crops, till, hand weed or mulch to manage weeds.
Give animals antibiotics, growth hormones and medications to prevent disease and spur growth.	Give animals organic feed and allow them access to the outdoors. Use preventive measures — such as rotational grazing, a balanced diet and clean housing — to help minimize disease.

Behind the Cape's Best Restaurants



Since 1925

**FRESH. LOCAL. DELIVERED DAILY.**

www.ringbroswholesale.com | 800-649-9827 | 485 Route 134 | South Dennis, MA 02660

# ORGANIC VALLEY

DAIRY



Regional, organic production builds the local economy and allows rural communities to protect the environment in which their children are raised. Our co-operative mission is to keep organic family farmers on the farm, taking care of the land and resources in your region.



Although Ring Bros. Wholesale does not stock Organic Valley product we work close with Organic Valley, and have built a relationship with distributors so that we are able to source any Organic Valley product available, for your establishment. Ring Bros. Wholesale stands behind the mission Organic Valley has set forth to deliver, and we believe the products are the best in the category.

Please contact us with specific Organic Valley needs and Ring Bros. Wholesale can put together a program which works for you.

Behind the Cape's Best Restaurants



Since 1925

## FRESH. LOCAL. DELIVERED DAILY.

[www.ringbroswholesale.com](http://www.ringbroswholesale.com) | 800-649-9827 | 485 Route 134 | South Dennis, MA 02660



**BUTTER/MARGARINE**

BUTTER, BALLS UNSALTED (¼ OZ) 3/6 LB  
 BUTTER, BALLS SALTED (¼ OZ) 3/6 LB  
 BUTTER, BLEND 30/1 LB  
 BUTTER, CHIPS 30 LB / 6/5 LB  
 BUTTER, CHIPS CONTINENTAL 5/5.75 LB  
 BUTTER, CLARIFIED 4/5 LB  
 BUTTER, CUPS 8 LB / 90 CT  
 BUTTER, QUARTERS LIGHTLY SALTED 36/1 LB  
 BUTTER, QUARTERS UNSALTED (CABOT) 18/1 LB  
 BUTTER, SOLIDS LIGHTLY SALTED 36/1 LB  
 BUTTER, SOLIDS UNSALTED 36/1 LB  
 BUTTER, WHIPPED 2/5 LB TUB  
 MARGARINE, SOLIDS 30/1 LB  
 MARGARINE, CUPS 600 CT  
 MARGARINE, WHIPPED ALL PURPOSE 5 LB TUB  
 MARGARINE, 90/10 BLEND 30 LB

CASE / EACH  
 CASE / EACH  
 CASE / LB  
 CASE  
 CASE  
 CASE  
 CASE  
 CASE / LB  
 CASE / LB  
 CASE / LB  
 CASE / LB  
 CASE / EACH  
 CASE  
 CASE  
 TUB  
 CASE

**CREAM**

CREAMERS, ASEPTIC 360 CT  
 CREAM, HALF AND HALF CREAMERS 400 CT  
 CREAM, HALF AND HALF HALF GALLON  
 CREAM, HALF AND HALF QUART  
 CREAM, HEAVY 40% QUART  
 CREAM, HEAVY 36% QUART  
 CREAM, LIGHT CREAM CREAMERS  
 CREAM, LIGHT QUARTS  
 CREAM, WHIPPED TOPPING CAN 12/15 OZ

CASE  
 CASE  
 EACH  
 CASE / EACH  
 CASE / EACH  
 CASE / EACH  
 CASE  
 CASE / EACH  
 CASE / EACH

**CREAM CHEESE**

CREAM CHEESE 3 LB BLOCK 10 CT  
 CREAM CHEESE 1 OZ PORTION 100CT  
 CREAM CHEESE WHIPPED 4/5 LB TUB

CASE / EACH  
 CASE  
 EACH

**CRÈME FRAICHE**

CREME FRAICHE TUB 3 LB

EACH

**COTTAGE CHEESE**

COTTAGE CHEESE 5 LB TUB

EACH

**EGGS**

EGGS, HARD BOILED 20 LB (DRY PACK)  
 EGGS, LARGE CAGE FREE 15 DOZEN  
 EGGS, LARGE WHITE LOOSE 15 DOZEN  
 EGGS, LARGE BROWN LOOSE 15 DOZEN  
 EGGS, QUAIL 10 CT  
 EGGS, TABLE READY (LIQUID EGGS) 15/2 LB  
 EGGS, X-LARGE BROWN BOXED 15 DOZEN  
 EGGS, X-LARGE WHITE LOOSE 15 DOZEN  
 EGGS, WHITES 15/2 LB  
 EGGS, YOLKS 15/1 LB

CASE  
 CASE / EACH  
 CASE  
 CASE  
 EACH  
 CASE  
 CASE / EACH  
 CASE  
 CASE  
 CASE

**HORSERADISH**

HORSERADISH, PREPARED QT / GALLON

EACH

**HUMMUS**

HUMMUS 4/2 LB

EACH / CASE

**ICE CREAM MIX**

ICE CREAM MIX, VANILLA 5% 2 / 2.5 GAL  
 ICE CREAM MIX, CHOCOLATE 5% 2 / 2.5 GAL

EACH  
 EACH

**MILK**

MILK, HERSHEY'S 1% WHITE MILK 12/12 OZ  
 MILK, HERSHEY'S CHOCOLATE 12/12 OZ  
 MILK, 1% HALF GALLON  
 MILK, 1% HALF PINT  
 MILK, 2% 20 QUART DISPENSER  
 MILK, 2% HALF GALLON  
 MILK, 2% HALF PINT  
 MILK, BUTTERMILK QUART  
 MILK, CHOCOLATE 20 QUART DISPENSER *SPECIAL ORDER*  
 MILK, CHOCOLATE HALF PINT  
 MILK, CHOCOLATE HALF GALLON  
 MILK, LACTAID 100 QUART  
 MILK, SKIM HALF GALLON  
 MILK, SKIM 20 QUART DISPENSER *SPECIAL ORDER*  
 MILK, SKIM HALF PINT  
 MILK, WHOLE 14 OZ

CASE  
 CASE  
 EACH  
 EACH  
 EACH  
 EACH  
 EACH  
 EACH  
 EACH  
 EACH  
 EACH  
 EACH  
 EACH  
 EACH  
 EACH  
 EACH

# NARRAGANSETT



Narragansett Creamery is a family-owned company and home of award-winning artisan yogurt made daily in Providence, RI.

**WHOLE MILK PLAIN 6/32oz**  
**LOW FAT VANILLA 6/32oz**  
**LOW FAT STRAWBERRY 6/32oz**

**LOW FAT VANILLA 12/5.3oz**  
**LOW FAT STRAWBERRY 12/5.3oz**  
**LOW FAT COFFEE 12/5.3oz**  
**LOW FAT BLUEBERRY 12/5.3oz**  
**LOW FAT PEACH 12/5.3oz**



**Locally Made in Providence, RI**

# CHOBANI



Chobani Greek Yogurt is a high-protein, blank canvas for everything delicious. Crafted from locally sourced milk with live and active cultures, it's creamy and nutrient dense.

**GREEK 5% PLAIN 6/32oz**  
**GREEK 0% VANILLA 6/32oz**  
**GREEK 0% PLAIN 6/32oz**

**Behind the Cape's Best Restaurants**



**Since 1925**

**FRESH. LOCAL. DELIVERED DAILY.**

**www.ringbroswholesale.com | 800-649-9827 | 485 Route 134 | South Dennis, MA 02660**



MILK, WHOLE 20 QUART DISPENSER	<i>SPECIAL ORDER</i>	EACH
MILK, WHOLE GALLON		EACH
MILK, WHOLE HALF GALLON		EACH
MILK, WHOLE HALF PINT		EACH
<b><u>MILK SUBSTITUTES (REFRIGERATED)</u></b>		
MILK SUBSTITUTES, OATMILK ORIGINAL (OATLY) 6/64 OZ		CASE
MILK SUBSTITUTES, ALMOND ORIGINAL UNSWT (BLUE DIAMOND)		CASE
<b><u>ORGANIC BUTTER</u></b>		
ORGANIC BUTTER, QUARTERS SALTED (ORGANIC VALLEY) 1 LB		EACH
<b><u>ORGANIC CREAM</u></b>		
ORGANIC CREAM, HALF & HALF (ORGANIC VALLEY) 32 OZ		EACH
<b><u>ORGANIC EGGS</u></b>		
ORGANIC EGGS, LARGE BROWN BOXED (ORGANIC VALLEY) DOZ		EACH
<b><u>ORGANIC YOGURT</u></b>		
<b><u>SOUR CREAM</u></b>		
SOUR CREAM, 1 LB / 6/5 LB		EACH
SOUR CREAM, 1 OZ / 100 CT		CASE
<b><u>YOGURT (FOOD SERVICE)</u></b>		
YOGURT, GREEK 5% PLAIN (CHOBANI) 6/32 OZ		CASE / EACH
YOGURT, GREEK 0% VANILLA (CHOBANI) 6/32 OZ		CASE / EACH
YOGURT, GREEK 0% PLAIN (CHOBANI) 6/32 OZ		CASE / EACH
YOGURT, WHOLE MILK PLAIN <i>LOCAL (NARRAGANSETT)</i> 6/32 OZ		CASE / EACH
YOGURT, LOW FAT VANILLA <i>LOCAL (NARRAGANSETT)</i> 6/32 OZ		CASE / EACH
YOGURT, LOW FAT STRAWBERRY <i>LOCAL (NARRAGANSETT)</i> 6/32 OZ		CASE / EACH
<b><u>YOGURT (INDIVIDUAL)</u></b>		
YOGURT, BAVARIAN QUARK VANILLA <i>LOCAL (LIEBE)</i> 12/5.3 OZ		CASE
YOGURT, BAVARIAN QUARK LEMON <i>LOCAL (LIEBE)</i> 12/5.3 OZ		CASE
YOGURT, LOW FAT VANILLA <i>LOCAL (NARRAGANSETT)</i> 12/5.3 OZ		CASE
YOGURT, LOW FAT STRAWBRY <i>LOCAL (NARRAGANSETT)</i> 12/5.3 OZ		CASE
YOGURT, LOW FAT COFFEE <i>LOCAL (NARRAGANSETT)</i> 12/5.3 OZ		CASE
YOGURT, LOW FAT BLUEBERRY <i>LOCAL (NARRAGANSETT)</i> 12/5.3 OZ		CASE
YOGURT, LOW FAT PEACH <i>LOCAL (NARRAGANSETT)</i> 12/5.3 OZ		CASE



# NARRAGANSETT



At Narragansett Creamery, we make cheese everyday because we love to *and* because we believe in freshness. We use local milk, kind bacteria, vegetable-based rennet, salt and nothing else. We support fair-trade and local ingredients to the best of our ability and our farmers pledge to not use growth hormones. We are proud to be a family-owned company supported by the Southern New England community we belong to.



Locally Made in Rhode Island

# CABOT CREAMERY



Vermont and Chateaugay, NY. The best premium butter churned with care in West Springfield, Massachusetts.

We manage four plants in three states, employing over 1,000 people, who make the best dairy products on the planet.

Award-winning cheeses made with love and pride in Cabot and Middlebury,



Locally Made in Vermont

Behind the Cape's Best Restaurants



Since 1925

**FRESH. LOCAL. DELIVERED DAILY.**

www.ringbroswholesale.com | 800-649-9827 | 485 Route 134 | South Dennis, MA 02660



CHEESE, AMERICAN WHITE 120 CT 4/5 LB	CASE / EACH
CHEESE, ASIAGO BLACK WAXED	LB
CHEESE, ASIAGO SHREDDED 5 LB BAG	EACH
CHEESE, BLUE CRUMBLED 4/5 LB	CASE / EACH
CHEESE, BLUE GREAT HILL	LB
CHEESE, BURRATA 2X4OZ (NARRAGANSETT) 6/8 OZ TUBS	CASE / EACH
CHEESE, GORGONZOLA 8 LB	LB
CHEESE, CRUMBLED GORGONZOLA	LB
CHEESE, BRIE 1 KILO	EACH
CHEESE, CHEDDAR SHARP WHITE, PRINT 10 LB	LB
CHEESE, CHEDDAR WHITE MILD, PRINT 10 LB	LB
CHEESE, CHEDDAR WHITE SLICED	CASE / EACH
CHEESE, CHEDDAR YELLOW SLICED	CASE / EACH
CHEESE, CHEDDAR WHITE SHREDDED 5 LB BAG	EACH
CHEESE, CHEDDAR YELLOW SHREDDED 5 LB BAG	EACH
CHEESE, FETA (NARRAGANSETT) 2/8 LB TUB	EACH
CHEESE, FETA CUMBLED 2.5 LB	EACH
CHEESE, FONTINA 1/4 WHEEL 6 LB	LB
CHEESE, GOAT 1 KILO	LB
CHEESE, GOAT CRUMBLED 2.5 LB	EACH
CHEESE, GOUDA SMOKED	LB
CHEESE, GRADA PADANO 1/4 WHEEL	LB
CHEESE, GRUYERE KING CENTER CUT (IMPORTED) 6 LB LOAF	LB
CHEESE, HAVARTI WITH DILL 7 LB	LB
CHEESE, MANCHEGO 1/2 WHEEL (3LB AVERAGE)	LB
CHEESE, MARSCAPONE 4/5 LB	EACH
CHEESE, MONTEREY JACK SHREDDED BAG	EACH
CHEESE, MONTEREY JACK/CHEDDAR SHREDDED 5 LB BAG	EACH
CHEESE, MONTEREY JACK PRINT 10 LB	LB
CHEESE, MONTEREY JACK/JALEPENO (PEPPERJACK) SLICED 10 LB	LB
<i>SLICED PEPPERJACK IS A SPECIAL ORDER ITEM</i>	
CHEESE, MONTEREY JACK/JALEPENO (PEPPERJACK) PRINT 10 LB	LB
CHEESE, MOZZARELLA	LB
CHEESE, MOZZARELLA, SLICED LOG (NARRAGANSETT) 12/16 OZ	EACH
CHEESE, MOZZARELLA (4 OZ OVOLINI) (NARRAGANSETT) 2/3 LB TUBEACH	
CHEESE, MOZZARELLA (1.5 OZ BOCC) (NARRAGANSETT) 2/3 LB TUB	EACH
CHEESE, MOZZARELLA (.45 OZ CILIEG) (NARRAGANSETT) 2/3 LB TUBEACH	
CHEESE, MOZZARELLA SHREDDED 5 LB BAG	EACH
CHEESE, PARMESAN REGGIANO 1/4 WHEEL (IMPORTED)	LB
CHEESE, PARMESAN GRATED 4/5 LB TUB	EACH
CHEESE, PARMESEAN SHAVED 5 LB BAG	EACH
CHEESE, PARMESAN SHREDDED BAG 2/5 LB BAG	EACH
CHEESE, PROVALONE SLICED	CASE / EACH
CHEESE, PROVALONE STICK	LB
CHEESE, QUESO FRESCO 1/4 WHEEL (NARRAGANSETT) 3/4 LB	EACH
CHEESE, RICOTTA 5 LB TUB	EACH
CHEESE, ROMANO (IMPORTED) 1/4 WHEEL	LB
CHEESE, ROMANO GRATED 5 LB TUB	EACH
CHEESE, ROMANO SHREDDED	LB
CHEESE, SPREAD GARLIC & HERB 5 LB TUB	EACH
CHEESE, SWISS, SANDWICH CUT	LB
CHEESE, SWISS SLICED	CASE / EACH

# CARLSON ORCHARD

Carlson Orchards is committed to making the highest quality orchard products available in the New England market. All of our products are delicious, and carry our recognizable brand-name of local excellence.

## APPLE CIDER

*Keep Refrigerated*

Gallon (seasonal)

Half Gallon

UPC: 8-56005-00323-9



**Locally Made in Harvard, MA**

# POM WONDERFUL



POM Wonderful 100% Pomegranate Juice. A little sweet, a little tart, and a whole lot of healthy. Powered by pomegranate antioxidants, it's authentic, delicious and 100% pure. There is no added sugar, colorants or cheap filler juices.

## 100% POMEGRANATE JUICE

*Keep Refrigerated*

6/16oz

UPC: 8-24150-40116-2

Behind the Cape's Best Restaurants



Since 1925

**FRESH. LOCAL. DELIVERED DAILY.**

www.ringbroswholesale.com | 800-649-9827 | 485 Route 134 | South Dennis, MA 02660



**BIONATURAE ORGANIC**

NECTAR, PEACH 25.4 OZ

CASE

NECTAR, PEAR 25.4 OZ

CASE

**CARLSON'S ORCHARDS**

CIDER, APPLE 4/128 OZ **LOCAL**

CASE / EACH

CIDER, APPLE 9/64 OZ **LOCAL**

CASE / EACH

**COLD BREW COFFEE SCIENCE**

COLD BREW, READY TO USE, FAS(T)INATOR BLEND 128OZ **LOCAL**

EACH

COLD BREW, LIBERATOR BLEND 5 GAL KEG **LOCAL**

EACH

NITROGEN GAS FOR KEG SYSTEM 40 CU BOTTLE

EACH

**JUICE, OTHER REFRIGERATED**

JUICE, ORANGE (HOOD) 14 OZ

CASE

JUICE, ORANGE (HOOD) HALF GALLON

EACH

**NATALIE'S ORCHID ISLAND**

BAR MIX, MARGARITA 6/64 OZ

CASE / EACH

JUICE, NOI LEMONADE 9/64 OZ / 12/16 OZ

CASE / EACH

JUICE, NOI STRAWBERRY LEMONADE 9/64 OZ / 12/16 OZ

CASE / EACH

JUICE, NOI LEMONADE ICED TEA 9/64 OZ / 6/16 OZ

CASE / EACH

JUICE, NOI BLOOD ORANGE 6/16 OZ / 6/32 OZ

CASE / EACH

JUICE, NOI ORANGE 4/128OZ / 9/64OZ / 12/32OZ / 6/16OZ

CASE / EACH

JUICE, NOI GRAPEFRUIT 9/64OZ / 12/32OZ / 6/16OZ

CASE / EACH

JUICE, NOI 100% PURE LEMON JUICE LITER 12/1 L (FROZEN)

CASE / EACH

JUICE, NOI 100% PURE LIME JUICE LITER 12/1 L (FROZEN)

CASE / EACH

JUICE, NOI HOLISTIC AURA 6/10 OZ

CASE

JUICE, NOI HOLISTIC PURIFY 6/10 OZ

CASE

JUICE, NOI HOLISTIC RESILIENT 6/10 OZ

CASE

*OTHER 16 OZ VARIETIES AVAILABLE AS A SPECIAL ORDER*

**NATIVE WATER**

WATER, NATURAL SPRING (NATIVE WATER) 24/16.9OZ **LOCAL**

EACH

**OCEAN SPRAY**

JUICE, CRANBERRY COCKTAIL (OCEAN SPRAY) 8/64 OZ

CASE / EACH

**POLAND SPRING**

WATER, POLAND SPRING 1 GALLON **LOCAL**

EACH

WATER, POLAND SPRING DISTILLED 1 GALLON **LOCAL**

EACH

WATER, POLAND SPRING 28/700 ML SPORT TOP **LOCAL**

CASE

WATER, POLAND SPRING 2/2.5 GAL **LOCAL**

CASE

**POM WONDERFUL**

JUICE, POMEGRANATE 6/16OZ

CASE / EACH

**RAIN WATER**

WATER, PURE MOUNTAIN (RAIN WATER) 24 / 16 OZ

CASE

**SAN PELLEGRINO**

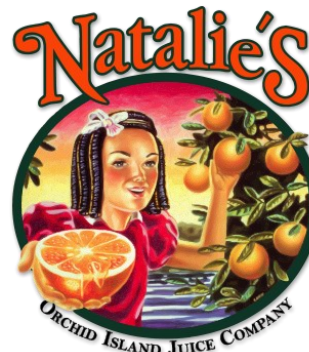
WATER, SAN PELLEGRINO SPARKLING 12/750 ML

CASE



# NATALIE'S ORCHID ISLAND JUICE COMPANY

We guarantee that only the finest fruit is picked fresh from the trees and squeezed to capture the flavor of the juice at its peak. Our state of the art chilling and sanitation equipment solidifies the process of keeping our 100% Fresh Squeezed Juice at its most desirable level of freshness and provides you with the longest shelf life possible.



## JUICES ORANGE JUICE WITH PULP

*Gallon, Half Gallon, Quart, Pint*

## GRAPEFRUIT JUICE

*Gallon, Half Gallon, Quart, Pint*

## BLOOD ORANGE JUICE

*Quart*

## SEASONAL BEVERAGES

### LEMONADE

### STRAWBERRY LEMONADE

### LEMONADE ICED TEA

*Half Gallon, Pint*

## MARGARITA MIXER

*Half Gallon*



### Special Order

16oz Orange Mango, Tangerine, Orange Pineapple, Blood Orange, Orange Beet, Carrot, Carrot Ginger, Raspberry Lemonade

Behind the Cape's Best Restaurants



Since 1925

# FRESH. LOCAL. DELIVERED DAILY.

www.ringbroswholesale.com | 800-649-9827 | 485 Route 134 | South Dennis, MA 02660

# NATALIE'S ORCHID ISLAND JUICE COMPANY

Welcome to the next generation of Natalie's featuring our new line of holistic, cold-pressed juice! Mindfully crafted with functional botanicals, traditional spices & superfood ingredients to promote health, wellness & nutrition.



## HOLISTIC JUICES

**AURA**  
**PURIFY**  
**RESILIENT**  
6/10oz



BEVERAGES



We squeeze 100% fresh limes and lemons, so you don't have to.

Rich in Vitamin C & phytonutrients.

No preservatives, no artificial ingredients, no added sugar, no GMOs

**FROZEN 100% PURE**  
**100% LEMON JUICE**  
**100% LIME JUICE**  
*Frozen Product—12/1 Liter*

Behind the Cape's Best Restaurants



Since 1925

**FRESH. LOCAL. DELIVERED DAILY.**

www.ringbroswholesale.com | 800-649-9827 | 485 Route 134 | South Dennis, MA 02660



# RAIN WATER



Plastic-free canned water bottles. The most sustainable thing to happen to bottled water, is aluminum. Single sourced pure mountain spring water bottled in aluminum for plastic-free oceans and bodies.

**PURE MOUNTAIN  
SPRING WATER**

24 / 16oz

UPC: 8-60002-06930-2



# NATIVE WATER



This water is sourced from natural springs in The Berkshires and The Green Mountains. Packaged in 100% post consumer recycled plastic.

**LOCALLY SOURCED SPRING WATER**

24 / 16.9oz

UPC: 9-49222-8152-4



**Locally Sourced in New England**

Behind the Cape's Best Restaurants



Since 1925

**FRESH. LOCAL. DELIVERED DAILY.**

www.ringbroswholesale.com | 800-649-9827 | 485 Route 134 | South Dennis, MA 02660

# COLD BREW COFFEE

Cold Brew Coffee Science and Ring Bros. Wholesale have partnered to provide customers the best possible cold brew product.

Our team of coffee professionals each have years of hands on experience hand crafting, selecting, distributing, and serving cafes, restaurants, markets, mom & pops, and foodservice establishments.



We both share the same objective... to serve the best quality products and make our customers happy, increasing your sales by featuring cold brewed coffee and smoothies. Both you and your customers will discover what they've been missing.

## **COLD BREW COFFEE SCIENCE LIBERATOR COLD BREWED NITRO COFFEE**

Our cold brewed coffee is a proprietary recipe with both high elevation Brazilian Estate and Organic Rain Forest Alliance Columbian coffees. Full bodied, smooth and creamy. Notes of milk chocolate, caramel and cane sugar.

**5 Gal Keg | YIELD IS 640 oz**



**Locally Brewed in Berkley, MA**

**Behind the Cape's Best Restaurants**



**Since 1925**

# **FRESH. LOCAL. DELIVERED DAILY.**

[www.ringbroswholesale.com](http://www.ringbroswholesale.com) | 800-649-9827 | 485 Route 134 | South Dennis, MA 02660

# ASIAN FOODS

Asian fusion cooking is the practice of combining foods and cooking styles from diverse sources to create new dishes and flavor combinations. This type of cooking has great potential to turn ordinary dining into a wow experience. With weekly deliveries from some of the top Asian distributors, we've selected products which will help your menu distinguish itself from others on Cape.

SPECIALTY

**AJI MIRIN (TSUBASA) 1/2 GALLON**  
**CHILI PASTE (SAMBAL OELEK) GAL**  
**CHILI PASTE GARLIC (HUY FONG) GAL**  
**KOREAN CHILI PASTE (GOCHUJANG) 2 KILO**  
**SRIRACHA CHILI SAUCE (HUY FONG) 28 OZ**  
**SWEET CHILI SAUCE (MAE PLOY) 32 OZ**  
**COCONUT MILK, HIGH FAT 24/13.5 / #10**  
**GREEN, RED, YELLOW CURRY PASTE 35 OZ**  
**EGG ROLL WRAPPERS 1 LB**  
**FISH SAUCE (3 CRABS) 24 OZ**  
**HOISIN SAUCE 5 LB CAN**  
**MISO SOY PASTE (RED & WHITE) 35.4 OZ**  
**BEAN THREADED NOODLES (DRY)**  
**FRESH LO MEIN NOODLES 1 LB**  
**PAD THAI NOODLES 1LB**  
**SOMEN NOODLES 3 LB**  
**UDON NOODLES 12.8 OZ**  
**NORI 1/2 SHEETS 10/50 CT**  
**SESAME OIL, 100% PURE 56 OZ**  
**SOY SAUCE (KIKKOMAN) 64 OZ**  
**SOY SAUCE, LOW SODIUM 64 OZ**  
**SWEET SOY SAUCE (ABC) 20.9 OZ BOTTLE**  
**PANKO FLAKES 20 LB**  
**PICKLED GINGER (PINK) 10/2 LB TUB**  
**PICKLED GINGER (WHITE) 10/2 LB TUB**  
**RICE WINE VINEGAR 1 GALLON**  
**SPRING ROLL SKIN RICE PAPER 12 OZ**  
**SPRING ROLL SKIN, WHEAT 12 OZ**  
**TAMARI SOY SAUCE (KIKKOMAN) 64 OZ**  
**WAKAME SEAWEED SALAD 2 KILO TRAY**  
**WASABI POWDER 2.2 LB**  
**WATER CHESTNUTS**  
**WONTON SKINS 1 LB**



Behind the Cape's Best Restaurants



Since 1925

**FRESH. LOCAL. DELIVERED DAILY.**

[www.ringbroswholesale.com](http://www.ringbroswholesale.com) | 800-649-9827 | 485 Route 134 | South Dennis, MA 02660



**ANCHOVIES**

ANCHOVIES, WHITE TRAY 1 KILO

EACH

ANCHOVIES, FILLETS IN OLIVE OIL 28 OZ

EACH

**ASIAN FOODS**

ASIAN FOODS, AJI MIRIN (TSUBASA) 1/2 GALLON

EACH

ASIAN FOODS, CHILI PASTE (SAMBAL OELEK) GAL

EACH

ASIAN FOODS, CHILI PASTE KOREAN (GOCHUJANG) 2 KILO

EACH

ASIAN FOODS, CHILI PASTE GARLIC (HUY FONG) 3/1 GAL

EACH

ASIAN FOODS, CHILI SAUCE, HOT SRIRACHA (HUY FONG) 12/28 OZ

CASE / EACH

ASIAN FOODS, CHILI SAUCE, SWEET (MAE PLOY) 12/32 OZ

CASE / EACH

ASIAN FOODS, COCONUT MILK, HIGH FAT 24/13.5 OZ / #10

CASE / EACH

ASIAN FOODS, CURRY PASTE GREEN / RED / YELLOW 35 OZ

EACH

ASIAN FOODS, EGG ROLL WRAPPERS 1 LB

EACH

ASIAN FOODS, FISH SAUCE, (3 CRABS) 24 OZ

EACH

ASIAN FOODS, HOISIN SAUCE CAN 6/5 LB

CASE / EACH

ASIAN FOODS, OYSTER SAUCE 6/5 LB

CASE / EACH

ASIAN FOODS, MISO SOY PASTE RED / WHITE 35.4 OZ

EACH

ASIAN FOODS, NOODLES, BEAN THREADED (DRY)

EACH

ASIAN FOODS, NOODLES, LO MEIN, FRESH 1 LB

EACH

ASIAN FOODS, NOODLES, PAD THAI

EACH

ASIAN FOODS, NOODLES, SOMEN 3 LB

EACH

ASIAN FOODS, NOODLES, UDON 12.8 OZ

EACH

ASIAN FOODS, NORI 1/2 SHEETS 10/50 CT

CASE / EACH

ASIAN FOODS, SESAME OIL 100% PURE 56 OZ

EACH

ASIAN FOODS, PANKO FLAKES 20 LB

EACH

ASIAN FOODS, PICKLED GINGER (PINK) 10/2 LB

EACH

ASIAN FOODS, PICKLED GINGER (WHITE) 10/2 LB

EACH

ASIAN FOODS, RICE WINE VINEGAR 1 GALLON

EACH

ASIAN FOODS, SOY SAUCE (KIKKOMAN) 64 OZ

EACH

ASIAN FOODS, SOY SAUCE SWEET (ABC) 20.9 OZ BOTTLE

EACH

ASIAN FOODS, SOY SAUCE LOW SOD (KIKKOMAN) 64 OZ

EACH

ASIAN FOODS, SPRING ROLL SKIN RICE PAPER 40 / 14 OZ

EACH

ASIAN FOODS, SPRING ROLL SKIN, WHEAT 25 / 40CT 12 OZ

EACH

ASIAN FOODS, TAMARI SOY SAUCE (KIKKOMAN) 64 OZ

EACH

ASIAN FOODS, WAKAME SEAWEED SALAD 2 KILO TRAY

EACH

ASIAN FOODS, WASABI GREEN PEAS

LB

ASIAN FOODS, WASABI POWDER 2.2 LB

EACH

ASIAN FOODS, WATER CHESTNUTS, SLICED #10 CAN

EACH

ASIAN FOODS, WONTON SKINS 1 LB

EACH

**BAKING INGREDIENTS**

AGAVE NECTAR, LIGHT 4/46 OZ

CASE / EACH

COCONUT, SHAVED UNSWEETENED 4/12 OZ

CASE / EACH

CONDENSED MILK, SWEETENED (EAGLE) 24/14 OZ

CASE

EVAPORATED MILK (CARNATION) 24/14 OZ

CASE

FLOUR, ALL PURPOSE (KING ARTHUR SPECIAL) 50 LB

EACH

HONEY 5 LB

EACH

MAPLE SYRUP, VERMONT GRADE A 64 OZ **LOCAL**

EACH

SUGAR, GRANULATED 50 LB

EACH

SUGAR, LIGHT BROWN 24/1 LB

CASE

**BASES / STOCKS**

STOCK, VEGETABLE (LIQUID) 12/32 OZ

CASE

STOCK, CHICKEN (LIQUID) 12/32 OZ

CASE

STOCK, BEEF (LIQUID) 12/32 OZ

CASE

**CONDIMENTS / SAUCES**BBQ SAUCE **LOCAL (SWEET BABY RAYS)** 4/1 GAL

CASE / EACH

COCKTAIL SAUCE **LOCAL (KEN'S)** 4/1 GAL

CASE / EACH

KETCHUP, HUNTS 6/#10 CAN

CASE / EACH

MAYONNAISE 4/1 GAL

CASE / EACH

MAYONNAISE (HELLMANS) 4/1 GAL

CASE / EACH

MUSTARD, DELI 4/1 GAL

CASE / EACH

MUSTARD, DIJON 4/1 GAL

CASE / EACH

RELISH, SWEET 4/1 GAL

CASE / EACH

SAUERKRAUT 6/#10 CANS

CASE / EACH

WORCESTERSHIRE SAUCE 1 GAL

EACH

**CRACKERS**

CRACKERS, OYSTER (WESTMINSTER) 150 / .5 OZ

CASE

**DRIED FRUITS**

DRIED FRUITS, APRICOTS #4 7 LB TUB

EACH

DRIED FRUITS, BLUEBERRIES 5 LB BOX

EACH

DRIED FRUITS, CHERRIES 5 LB BOX

EACH



# CLAM FRY

Since 1938, Golden Dipt has been the #1 supplier of breadings, batters and bread crumbs. Our longstanding history of providing the freshest premium quality products assures that you'll serve nothing but the best.

## Clam Fry Mix 50lb Bag

Formulated for frying clams and other seafood, it is made from a blend of corn flour, cornmeal and wheat flour and is lightly seasoned to enhance the clam's natural flavor.



SPECIALTY

# MAPLE SYRUP

We purchase syrup from sugar makers throughout Vermont. These dedicated family farmers faithfully stoke their sugar house evaporators each spring to carry on this time-honored tradition. We are proud to be able to help sustain family farms.

## Maple Syrup Vermont Grade A - 64oz



## Locally Made in Vermont

Behind the Cape's Best Restaurants



Since 1925

# FRESH. LOCAL. DELIVERED DAILY.

www.ringbroswholesale.com | 800-649-9827 | 485 Route 134 | South Dennis, MA 02660

DRIED FRUITS, CRANBERRIES 6 LB TUB	EACH
DRIED FRUITS, DATES 11 LB	CASE / LB
DRIED FRUITS, FIGS (SIERRA) 5 LB BOX	EACH
DRIED FRUITS, RAISINS (THOMPSON) 7LB TUB	EACH
DRIED FRUITS, GOLDEN RAISINS 7 LB TUB	EACH
DRIED FRUITS, TOMATOES S/D (DICED) 5 LB BAG	EACH
DRIED FRUITS, TOMATOES S/D (HALVES) 5 LB BAG	EACH
DRIED FRUITS, TOMATOES S/D (JULIENNE) 5 LB BAG	EACH
<b><u>FRY BATTER</u></b>	
CLAM FRY (GOLDEN DIPT) 50 LB	EACH
<b><u>GRAINS</u></b>	
GRAINS, FARRO 4/3 LB	EACH
GRAINS, QUINOA RED 5 LB	EACH
GRAINS, QUINOA WHITE 5 LB	EACH
GRAINS, QUINOA TRI-COLOR 5 LB	EACH
POLENTA, YELLOW MEDIUM GRAIN 5 LB	EACH
<b><u>MILK SUBSTITUTES (SHELF STABLE)</u></b>	
ALMOND MILK, ORG ORIGINAL UNSWT (PACIFIC) 12/32 OZ	CASE
ALMOND MILK, ORG VANILLA UNSWT (PACIFIC) 12/32 OZ	CASE
COCONUT MILK, ORG ORIGINAL UNSWT 12/32OZ	CASE
<b><u>NUTS / SEEDS</u></b>	
NUTS, ALMONDS (BLANCHED, SLIVERED) 5 LB TUB	EACH
NUTS, ALMONDS (BLANCHED, SLICED) 5 LB TUB	EACH
NUTS, ALMONDS (RAW, WHOLE) 6LB TUB	EACH
NUTS, ALMONDS (MARCONA) 5 KILO TUB	EACH
NUTS, CASHEWS (HALVES) 5LB TUB	EACH
NUTS, HAZELNUTS (UNBLANCHED FILBERTS) 6 LB TUB	EACH
NUTS, PEANUTS (UNSALTED, SHELLED) 6 LB TUB	EACH
NUTS, PECAN (HALVES, JR. MAMMOTH) 4 LB TUB	EACH
NUTS, PIGNOLIA (PINE NUTS) 6 LB TUB, LB	EACH / LB
NUTS, PISTACHIOS (RAW, MEATS) 6 LB TUB	EACH
NUTS, WALNUTS (HALVES & PIECES) 4 LB TUB	EACH
SEEDS, PEPITAS (RAW) 5 LB TUB	EACH
<b><u>OILS / VINEGARS</u></b>	
OILS, 10% SALAD OIL 6/3 LITER	CASE
OILS, AVOCADO (MARCONI) 4/51 OZ BAG-IN-BOX	CASE / EACH
OILS, CANOLA (CATANIA) 35 LB JIB	EACH
OILS, EXTRA VIRGIN FRSH HRVST (MARCONI) 4/51 OZ BAG-IN-BOX	CASE / EACH
OILS, EXTRA VIRGIN FRSH HRVST (MARCONI) 10L BAG-IN-BOX	EACH
OILS, EXTRA VIRGIN, GREEK (ARISTON) 5L	EACH
OILS, EXTRA VIRGIN W/ TRUFFLE 8 OZ	EACH
OILS, SESAME 100% PURE 56 OZ	EACH
VINEGAR, BALSAMIC, MODENA (ARISTON) 1GAL	EACH
VINEGAR, BALSAMIC GLAZE 6/12.9 OZ	CASE / EACH
VINEGAR, RED WINE 1 GAL	EACH
VINEGAR, RICE WINE 1 GAL	EACH
VINEGAR, SHERRY WINE 25 OZ	EACH
VINEGAR, WHITE 1 GAL	EACH
<b><u>PASTES / SPREADS</u></b>	
PASTE, TAHINI 16 OZ	EACH
PASTE, HARISSA 12 OZ JAR	EACH
PASTE, VANILLA BEAN	EACH
SPREAD, FIG (DIVINA) 3.5 LB	EACH
<b><u>RICE / DRY PASTA</u></b>	
RICE, ARBORIO 12/35 OZ	CASE / EACH
RICE, BASMATI 10 LB	EACH
RICE, JASMINE 25 LB	EACH
RICE, SUSHI 15 LB	EACH
COUSCOUS, ISREALI 4/5 LB	EACH
<b><u>SALAD DRESSINGS</u></b>	
DRESSING, BALSAMIC VINAIGRETTE LOCAL (KEN'S) 4/1 GAL	CASE / EACH
DRESSING, BLUE CHEESE (CHUNKY) LOCAL (KEN'S) 4/1 GAL	CASE / EACH
DRESSING, HONEY MUSTARD LOCAL (KEN'S) 4/1 GAL	CASE / EACH
DRESSING, ITALIAN CREAMY LOCAL (KEN'S) 4/1 GAL	CASE / EACH
DRESSING, ITALIAN DELUXE LOCAL (KEN'S) 4/1 GAL	CASE / EACH
DRESSING, MAGIC BLEND COLESLAW LOCAL (KEN'S) 4/1 GAL	CASE / EACH
DRESSING, CREAMY CAESAR LOCAL (KEN'S) 4/1 GAL	CASE / EACH
DRESSING, PARMESEAN PEPPERCORN LOCAL (KEN'S) 4/1 GAL	CASE / EACH
DRESSING, TARTAR SAUCE LOCAL (KEN'S) 4/1 GAL	CASE / EACH
DRESSING, BUTTERMILK RANCH LOCAL (KEN'S) 4/1 GAL	CASE / EACH
DRESSING, RIVERWAY CAPE COD RETAIL LOCAL (KEN'S) 12/8OZ	CASE





# ***SALAD DRESSING***

## **RIVERWAY CAPE COD DRESSING FOR SALADS AND SEAFOODS**



Created in 1945 from a Bass River Sea Captain's recipe brought from the Far East and perfected in a Yarmouthport home, this dressing contains Chinese mustard and garlic in a perfect blend to captivate with its unique taste.

### **RIVERWAY CAPE COD SALAD DRESSING**

*12/8oz Bottles SRP \$3.59*

Upc 0-37373-19999-4



**Locally Made  
in Avon, MA**



Ken's is a family business that traces back to the basement of Ken's Steak House, a restaurant in Framingham, Massachusetts that became known for its delicious salad dressings.

**BALSAMIC VINAIGRETTE, CHUNKY BLUE CHEESE,  
CREAMY ITALIAN, DELUXE ITALIAN, HONEY MUSTARD,  
MAGIC BLEND COLESLAW, CREAMY CAESAR,  
BUTTERMILK RANCH, PARMESEAN PEPPERCORN**

*1 Gallon*



**Locally Made in Marlborough, MA**

**Behind the Cape's Best Restaurants**



**Since 1925**

**FRESH. LOCAL. DELIVERED DAILY.**

**www.ringbroswholesale.com | 800-649-9827 | 485 Route 134 | South Dennis, MA 02660**

## SNACKS

SNACK, WASABI COATED GREEN PEAS 20 LB BOX

EACH

## SEASONINGS

BAY SEASONING (EAST WEST) 16 OZ

EACH

BLACKENING SPICE (EAST WEST) 20 OZ

EACH

CAJUN SPICE (EAST WEST) 20 OZ

EACH

CHINESE FIVE SPICE (EAST WEST) 16 OZ

EACH

HOME FRY SEASONING (EAST WEST) 24 OZ

EACH

JAMAICAN JERK SEASONING (EAST WEST) 16 OZ

EACH

NANTUCKET SEAFOOD SEASONING (EAST WEST) 16 OZ

EACH

POULTRY SEASONING (EAST WEST) 12 OZ

EACH

RIB RUB (EAST WEST) 20 OZ

EACH

NEW ENGLAND STEAK SEASONING (EAST WEST)

EACH

## SPICES AND HERBS

ALLSPICE, GROUND (EAST WEST) 16 OZ

EACH

ANISE SEED (EAST WEST) 12 OZ

EACH

ANCHO CHILI POWDER (EAST WEST) 200Z

EACH

BASIL, CUT (EAST WEST) 5.5 OZ

EACH

BAY LEAVES (EAST WEST) 1 OZ

EACH

CARAWAY, WHOLE (EAST WEST) 16 OZ

EACH

CAYENNE PEPPER (EAST WEST) 16 OZ

EACH

CELERY SEED, WHOLE (EAST WEST) 16 OZ

EACH

CHILI POWDER (EAST WEST) 20 OZ

EACH

CHILI POWDER, ANCHO (EAST WEST) 20 OZ

EACH

CHILI POWDER, CHIPOTLE (EAST WEST) 16 OZ

EACH

CHIVES (EAST WEST) 2 OZ

EACH

CINNAMON POWDER (EAST WEST) 16 OZ

EACH

CINNAMON STICKS (EAST WEST) 8 OZ

EACH

CUMIN POWDER (EAST WEST) 16 OZ

EACH

CURRY POWDER (EAST WEST) 16 OZ

EACH

DILL WEED (EAST WEST) 4.5 OZ

EACH

FENNEL SEED, WHOLE (EAST WEST) 12OZ

EACH

GARLIC POWDER, CALIFORNIA (EAST WEST) 20 OZ

EACH

GINGER, GROUND (EAST WEST) 16 OZ

EACH

HERBS DE PROVENCE (EAST WEST) 6 OZ

EACH

MARJORAM, LEAVES (EAST WEST) 4 OZ

EACH

MUSTARD POWDER (EAST WEST) 16 OZ

EACH

NUTMEG, GROUND (EAST WEST) 16 OZ

EACH

NUTMEG, WHOLE (EAST WEST) 16 OZ

EACH

ONION POWDER (EAST WEST) 16 OZ

EACH

OREGANO LEAVES (EAST WEST) 5.5 OZ

EACH

PAPRIKA, SPANISH FANCY (EAST WEST) 16 OZ

EACH

PAPRIKA, SMOKED (EAST WEST) 16 OZ

EACH

PARSLEY (EAST WEST) 16 OZ

EACH

PEPPER, BLACK CRACKED [BUTCHER'S] (EAST WEST) 15 OZ

EACH

PEPPER, BLACK TABLE GRIND (EAST WEST) 15 OZ

EACH

PEPPER, BLACK WHOLE PEPPERCORNS (EAST WEST) 15 OZ

EACH

PEPPER, CRUSHED RED (EAST WEST) 12 OZ

EACH

PEPPER, MIXED PEPPERCORNS [RAINBOW] (EAST WEST) 16 OZ

EACH

PEPPER, PINK PEPPERCORNS (EAST WEST) 8 OZ

EACH

PEPPER, WHITE GROUND (EAST WEST) 16 OZ

EACH

PEPPER, WHITE WHOLE (EAST WEST) 16 OZ

EACH

PICKLING SPICE (EAST WEST) 14 OZ

EACH

POPPY SEED (EAST WEST) 20 OZ

EACH

ROSEMARY LEAVES (EAST WEST) 6 OZ

EACH

SAFFRON 1 OZ

EACH

SAGE, RUBBED (EAST WEST) 7 OZ

EACH

SALT, KOSHER (MORTON) 48 OZ

EACH / CASE

SALT, PINK HIMALAYAN (EAST WEST) 32 OZ

EACH

SALT, BLACK HAWAIIAN (EAST WEST) 32 OZ

EACH

SALT, SEA SMOKED (EAST WEST) 32 OZ

EACH

SALT, SEA SALT FINE (EAST WEST) 32OZ

EACH

SALT, SEA SALT COURSE (EAST WEST) 32OZ

EACH

SALT, SEA SALT FINISHING (MALDON) 8.5OZ

EACH

SALT, SEA SALT GRAY (EAST WEST) 32 OZ

EACH

SESAME SEED, BLACK (EAST WEST) 20 OZ

EACH

SESAME SEED, TUXEDO (EAST WEST) 20 OZ

EACH

SESAME SEED, WHITE (EAST WEST) 20 OZ

EACH

TARRAGON LEAVES (EAST WEST) 2 OZ

EACH

THYME LEAVES (EAST WEST) 7 OZ

EACH



# EAST WEST

Rich in culture and food history, the nations on the shores of the brilliant azure Mediterranean Sea—Italy, Spain, France, Morocco, Greece, Lebanon, Syria, Turkey and Israel—have all contributed something special to the colorful, vibrant tapestry that is Mediterranean cuisine. These imported items from East West are quality Mediterranean foods used to create authentic dishes.



## Mediterranean Specialty Food Products

**Kalamata Pitted Olives 10lb tub**  
**Mixed Mediterranean Pitted Olives 10lb tub**  
**Spanish Queen Pitted Olives 1 Gallon**  
**Spanish Queen Stuffed Olives 1 Gallon**  
**Non Pareil Capers 32oz**  
**Caperberries 32oz**



Behind the Cape's Best Restaurants



Since 1925

**FRESH. LOCAL. DELIVERED DAILY.**

[www.ringbroswholesale.com](http://www.ringbroswholesale.com) | 800-649-9827 | 485 Route 134 | South Dennis, MA 02660



TURMERIC POWDER (EAST WEST) 16 OZ	EACH
<b><u>TORTILLAS</u></b>	
TORTILLAS, FLOUR 6IN 20CT	EACH
TORTILLAS, FLOUR 12IN 20CT	EACH
TORTILLAS, CORN 6IN 10CT	EACH
<b><u>VEGETABLES / FRUITS</u></b>	
ARTICHOKES, HEARTS QUARTERED 3 KG CAN	EACH
BABY CORN (150-200CT) #10 CAN	EACH
BEANS, BLACK BEANS #10 CAN	EACH
BEANS, CHICK PEAS #10 CAN	EACH
BEANS, CANNELLINI #10 CAN	EACH
BEANS, GIGANDES IN VINAIGRETTE (DIVINA) 4 LB CAN	EACH
BEANS, RED KIDNEY #10 CAN	EACH
BEETS, RED SALAD (DIVINA) 6.1LB CAN	EACH
CAPERS, NON PAREIL (EAST WEST) 32 OZ JAR	EACH
CAPERBERRIES (EAST WEST) 32 OZ JAR	EACH
CHERRIES, LARGE W/ STEMS 1 GAL	EACH
CORNICHONS 5 KILO	EACH
GRAPE LEAVES, DOLMAS (DIVINA) 2 KILO	EACH
OLIVES, BLACK PITTED MEDIUM #10 CAN	EACH
OLIVES, BLACK SLICED #10 CAN	EACH
OLIVES, MIXED MEDITERRANEAN PITTED (EAST WEST) 10 LB TUB	EACH
OLIVES, KALAMATA PITTED (EAST WEST) 10 LB TUB	EACH
OLIVES, SPANISH QUEEN PITTED (EAST WEST) 1 GAL	EACH
OLIVES, SPANISH QUEEN STUFFED (EAST WEST) 1 GAL	EACH
PEPPERS, BANANA RINGS 1 GAL	EACH
PEPPERS, JALAPENO (SLICED) 1GAL	EACH
PEPPERS, ROASTED RED 3 KG CAN	EACH
PEPPERS, PEPPERONCINI 1 GAL	EACH
PEPPERS, ROASTED YELLOW #10 CAN	EACH
PEPPERS, SWEETY DROPS, PERUVIAN TEAR DROP PEPPERS 6.6 LB	EACH
PICKLES, KOSHER DILL CHIPS 5 GAL (REFRIGERATED)	EACH
PICKLES, KOSHER DILL SPEARS 5 GAL (REFRIGERATED)	EACH
PUMPKIN, PUREE #10 CAN (SEASONAL)	EACH
TOMATOES, ROASTED RED TOMATOES (DIVINA) 4LB (FROZEN)	EACH

# EAST WEST



When you select this product you are getting product which is hand picked to be flavorful and of premium quality.

Our apricots are brilliantly orange, cranberries plump, and cherries are a perfect blend of sweet and tart.

## Dried Fruits

APRICOTS #4 7 LB TUB  
BLUEBERRIES 5 LB BOX  
CHERRIES 5 LB BOX  
CRANBERRIES 6 LB TUB  
DATES 10 LB BOX  
FIGS (SIERRA) 5 LB BOX  
RAISINS (THOMPSON) 7LB TUB  
RAISINS (GOLDEN SELECT) 7 LB TUB  
TOMATOES S/D (DICED) 5 LB BAG  
TOMATOES S/D (HALVES) 5 LB BAG  
TOMATOES S/D (JULIENNE) 5 LB BAG



## Snack Mix and Trail Mix

**CAPE COD SAND BAR MIX 9x4 LB TUB *SPECIAL ORDER***

A classic mix of Mini Pretzels, BBQ Corn Sticks, Butter Toffee Peanuts, Cheddar Crackers, Sesame Sticks and Honey Roast Sesame Chips.

**CAPE COD RAIL TRAIL MIX 9x5 LB TUB *SPECIAL ORDER***

A delicious mix of Honey Roast Sesame Sticks, Honey Roast Peanuts, Cinnamon Apple Chips, Pineapple and Cranberries.



*There's no need to stock large cases of product which ties up inventory because most product is packed in convenient resealable tubs.*

# EAST WEST

Our nuts are premium quality that any chef on Cape would be proud to use.

The cashews are savory with a taste of sweet, pecans are a beautiful golden brown color, and almonds taste amazing.



## Nuts and Seeds

**ALMONDS (BLANCHED, SLIVERED) 5 LB TUB**  
**ALMONDS (BLANCHED, SLICED) 5 LB TUB**  
**ALMONDS (RAW, WHOLE) 6 LB TUB**  
**ALMONDS (MARCONA) 5 KILO TUB**  
**CASHEWS (HALVES) 5 LB TUB**  
**HAZELNUTS (UNBL. FILBERTS) 6 LB TUB**  
**PEANUTS (UNSALTED, SHELLED) 6 LB TUB**  
**PECAN (HALVES, JR. MAMMOTH) 4 LB TUB**  
**PEPITAS (RAW) 7LB TUB**  
**PIGNOLIA NUTS (PINE NUTS) 6 LB TUB, LB**  
**PISTACHIOS (RAW, MEATS) 6 LB TUB**  
**WALNUTS (HALVES & PIECES) 4 LB TUB**



## Snacks

**WASABI GREEN PEAS 20 LB BOX**



*Most product is packed in convenient resealable tubs.*

Behind the Cape's Best Restaurants



Since 1925

**FRESH. LOCAL. DELIVERED DAILY.**

www.ringbroswholesale.com | 800-649-9827 | 485 Route 134 | South Dennis, MA 02660

SPECIALTY



# EAST WEST



We buy from a family owned business that has committed their lives to sourcing these spices from around the world.

Our mission is to provide the best quality spices at the best prices.

## Dried Herbs and Spices

ALLSPICE, GROUND  
ANISE SEED  
ANCHO CHILI POWDER  
BASIL, CUT  
BAY LEAVES  
CARAWAY, WHOLE  
CAYENNE PEPPER  
CELERY SEED, WHOLE  
PEPPER, CRUSHED RED  
CHILI POWDER  
ANCHO CHILI POWDER  
CHIPOTLE CHILI POWDER  
CHIVES  
CINNAMON POWDER  
CINNAMON STICKS  
CUMIN POWDER  
CURRY POWDER  
DILL WEED  
FENNEL SEED, WHOLE  
GARLIC POWDER (CALIF)  
GINGER, GROUND  
HERBS DE PROVENCE  
MARJORAM, GROUND  
MARJORAM, LEAVES  
MUSTARD POWDER  
NUTMEG, GROUND  
NUTMEG, WHOLE  
ONION POWDER  
OREGANO LEAVES  
PAPRIKA, SPANISH FANCY

PAPRIKA, SMOKED  
PARSLEY  
PEPPER, BLACK CRACKED(BUTCHER'S)  
PEPPER, BLACK TABLE GRIND  
PEPPER, BLACK WHOLE PEPPERCORNS  
PEPPER, CRUSHED RED  
PEPPER, MIXED PEPPERCORNS (RAINBOW)  
PEPPER, PINK PEPPERCORNS  
PEPPER, WHITE GROUND  
PEPPER, WHITE WHOLE  
PICKLING SPICE  
POPPY SEED  
ROSEMARY LEAVES  
SAFFRON  
SAGE, RUBBED  
SALT, BLACK TRUFFLE  
SALT, KOSHER  
SALT, PINK HIMALAYAN  
SALT, BLACK HAWAIIAN  
SALT, SEA SMOKED  
SALT, SEA (FINE)  
SALT, SEA (COURSE)  
SALT, SEA SALT (GRAY)  
SESAME SEED, BLACK  
SESAME SEED, TUXEDO  
SESAME SEED, WHITE  
TARRAGON LEAVES  
THYME LEAVES  
TURMERIC POWDER



# *EAST WEST*

These seasonings have been formulated by the small family business we source our spices from.

The blends are recognizable, but perfectly balanced for the flavor a chef is looking for.



## **Seasonings**

**BAY SEASONING**  
**BLACKENING SPICE**  
**CAJUN SPICE**  
**CHINESE FIVE SPICE**  
**HOME FRY SEASONING**  
**JAMAICAN JERK SEASONING**  
**NANTUCKET SEAFOOD SEASONING**  
**POULTRY SEASONING**  
**RIB RUB**  
**NEW ENGLAND STEAK SEASONING**

## **About East West Specialties**

Offered exclusively by Ring Bros. Wholesale we offer a broad range of products with the highest standard of quality a chef demands.

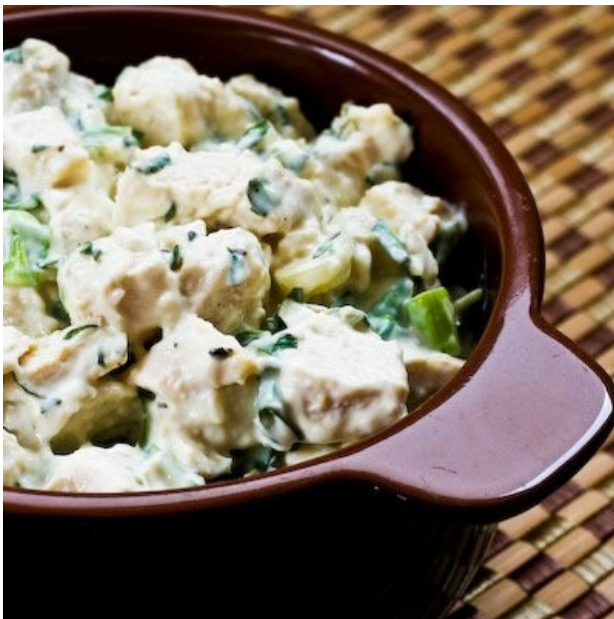
Each product has been carefully chosen after rigorous quality testing and review. Cape Cod chefs feel comfortable and trust that when they see a product with the East West badge, it should exceed quality expectations.

# BOSTON SALADS

Fresh ingredients and personal attention, which is why we make all of our salads with minimal preservatives.

Our salads are made fresh so you can enjoy them fresh - we wouldn't have it any other way! From chicken salad, to coleslaw, we make it all fresh everyday.

For your restaurant, salad bar, sandwich menu or catering event, our selection caters to a variety of your meal-time needs.



PREPARED



Locally Made in Boston, MA

Behind the Cape's Best Restaurants



Since 1925

**FRESH. LOCAL. DELIVERED DAILY.**

www.ringbroswholesale.com | 800-649-9827 | 485 Route 134 | South Dennis, MA 02660



### **BOSTON SALAD CLASSIC SALADS**

BOSTON SALAD, ASIAN CHOPPED COLE SLAW 2 /5LB	CASE
BOSTON SALAD, CHEF'S POTATO & EGG SALAD 2/5LB	CASE
BOSTON SALAD, COLE SLAW 2/5LB	CASE
BOSTON SALAD, COUNTRY COLE SLAW 2/5LB	CASE
BOSTON SALAD, CREAMY CHOPPED COLE SLAW 2/5LB	CASE
BOSTON SALAD, DEVEILED EGG & POTATO SALAD 2/5LB	CASE
BOSTON SALAD, ELBOW MACARONI SALAD 2/5LB	CASE
BOSTON SALAD, EPICUREAN POTATO SALAD 2/5LB	CASE
BOSTON SALAD, GERMAN POTATO SALAD 2/5LB	CASE
BOSTON SALAD, IDAHO BAKED POTATO 2/5LB	CASE
BOSTON SALAD, POTATO SALAD 2/5LB	CASE
BOSTON SALAD, REDSKIN POTATO SALAD 2/5LB	CASE

### **BOSTON SALAD SANDWICH SALADS**

BOSTON SALAD, BUFFALO CHICKEN SALAD 2/5LB	CASE
BOSTON SALAD, CAPE COD STYLE CHICKEN SALAD 2/5LB	CASE
BOSTON SALAD, CHICKEN SALAD 2/5LB	CASE
BOSTON SALAD, CRANBERRY WALNUT CHICKEN SALAD 2/5LB	CASE
BOSTON SALAD, DELUXE EGG SALAD 2/5LB	CASE
BOSTON SALAD, DELUXE HAM SALAD 2/5LB	CASE
BOSTON SALAD, SEAFOOD SALAD 2/5LB	CASE
BOSTON SALAD, SHRIMP AND SEAFOOD SALAD 2/5LB	CASE
BOSTON SALAD, SWEET CURRY CHICKEN SALAD 2/5LB	CASE
BOSTON SALAD, TUNA SALAD 2/5LB	CASE
BOSTON SALAD, WHITE MEAT CHICKEN SALAD 2/5LB	CASE

### **BOSTON SALAD PASTA SALADS**

BOSTON SALAD, ASIAN SESAME NOODLE SALAD 2/5LB	CASE
BOSTON SALAD, BUFFALO CHICKEN WITH ROTINI PASTA 2/5LB	CASE
BOSTON SALAD, CHEDDAR MACARONI 2/5LB	CASE
BOSTON SALAD, CHEESE TORTELLINI 2/5LB	CASE
BOSTON SALAD, CREAMY ITALIANO PASTA SALAD 2/5LB	CASE
BOSTON SALAD, GOURMET RADIATORE SALAD 2/5LB	CASE
BOSTON SALAD, GREEK PASTA SALAD 2/5LB	CASE
BOSTON SALAD, MEDITERRANEAN BOW TIE PASTA SALAD 2/5LB	CASE
BOSTON SALAD, ORIENTAL NOODLE 2/5LB	CASE
BOSTON SALAD, PASTA PRIMAVERA 2/5LB	CASE
BOSTON SALAD, SPINESTO PASTA 2/5LB	CASE
BOSTON SALAD, TORTELLINI PESTO SALAD 2/5LB	CASE
BOSTON SALAD, ZINFANDEL BOW TIE PASTA 2/5LB	CASE

### **BOSTON SALAD SPECIALTY SALADS**

BOSTON SALAD, ANTIPASTO SALAD BASE 2/5LB	CASE
BOSTON SALAD, ARTICHOKE SALAD 2/5LB	CASE
BOSTON SALAD, ASIAN CHICKEN NOODLE SALAD 2/5LB	CASE
BOSTON SALAD, BARBEQUE BAKED BEANS 2/5LB	CASE
BOSTON SALAD, BEET & ONION 2/5LB	CASE
BOSTON SALAD, CARROT & RAISIN 2/5LB	CASE
BOSTON SALAD, CITRUS QUINOA WITH ALMONDS 2/5LB	CASE
BOSTON SALAD, CONFETTI COUSCOUS 2/5LB	CASE
BOSTON SALAD, COWBOY CAVIAR 2/5LB	CASE
BOSTON SALAD, CUBAN BLACK BEAN 2/5LB	CASE
BOSTON SALAD, CUCUMBER MARINADE 2/5LB	CASE
BOSTON SALAD, CURRIED COUSCOUS SALAD 2/5LB	CASE
BOSTON SALAD, EDAMAME SALAD 2/5LB	CASE
BOSTON SALAD, EDAMAME RICE NOODLE SALAD 2/5LB	CASE
BOSTON SALAD, FARRO & ARTICHOKE HEARTS BALSAMIC 2/5LB	CASE
BOSTON SALAD, FOUR BEAN SALAD 2/5LB	CASE
BOSTON SALAD, GOURMET BEAN SALAD 2/5LB	CASE
BOSTON SALAD, ITALIAN MARINATED MUSHROOMS 2/5LB	CASE
BOSTON SALAD, MARINATED ROASTED RED PEPPERS 2/5LB	CASE

## **ORDER ON MONDAY FOR FRIDAY DELIVERY**

**All product ordered direct from Boston Salad. We do not stock product, in order to give our customers the longest possible shelf life. Product Refrigerated. Shelf life 21-30 days from date of production.**

# LIGHTHOUSE SOUPS

Warm up to our carefully crafted soups & chowders prepared with the same attention to detail and quality as our salads and prepared foods.



## LIGHTHOUSE

SOUPS & CHOWDERS

A BOSTON SALADS COMPANY

Featuring antibiotic free chicken, growth hormone free beef, fresh vegetables, and locally harvested seafood prepared in small batches.



PREPARED



## Locally Made in Boston, MA

Behind the Cape's Best Restaurants



Since 1925

# FRESH. LOCAL. DELIVERED DAILY.

[www.ringbroswholesale.com](http://www.ringbroswholesale.com) | 800-649-9827 | 485 Route 134 | South Dennis, MA 02660

BOSTON SALAD, MEDITERRANEAN ORZO SALAD 2/5LB	CASE
BOSTON SALAD, OLIVE SALAD 2/5LB	CASE
BOSTON SALAD, ROASTED CORN BRUSCETTA 2/5LB	CASE
BOSTON SALAD, TOMATO MOZZARELLA SALAD 2/5LB	CASE
BOSTON SALAD, WHEATBERRY SALAD 2/5LB	CASE
BOSTON SALAD, WHITE BEAN EDAMAME SALAD 2/5LB	CASE
BOSTON SALAD, ZESTY LEMON CHICK PEA SALAD 2/5LB	CASE

### **BOSTON SALAD ENTREES**

BOSTON SALAD, BROCCOLI QUICHE 6/24OZ	CASE
BOSTON SALAD, CRANBERRY STUFFING 1/5LB *FROZEN*	CASE
BOSTON SALAD, CHICKEN & BROCCOLI WITH PENNE 2/4LB	CASE
BOSTON SALAD, ITALIAN SAUSAGE, PEPPERS & ONIONS 2/5LB	CASE
BOSTON SALAD, MACARONI & BEEF 2/5LB	CASE
BOSTON SALAD, MACARONI & CHEESE 2/5LB	CASE
BOSTON SALAD, MEATBALLS & SAUCE 2/5LB	CASE
BOSTON SALAD, POULTRY STUFFING 1/5LB	CASE
BOSTON SALAD, QUICHE LORRAINE 6/24OZ	CASE
BOSTON SALAD, SPINACH FETA STUFFING 1/5LB	CASE
BOSTON SALAD, SPINACH QUICHE 6/24OZ	CASE
BOSTON SALAD, ZITI MARINARA 2/4LB	CASE

### **BOSTON SALAD DESSERTS**

BOSTON SALAD, APPLE CRISP 1/6LB *FROZEN*	CASE
BOSTON SALAD, BLUEBERRY CRISP 1/6LB *FROZEN*	CASE
BOSTON SALAD, CHERRY CRISP 1/6LB *FROZEN*	CASE
BOSTON SALAD, CHOCOLATE BREAD PUDDING 1/6LB	CASE
BOSTON SALAD, FRUIT AMBROSIA 1/6LB	CASE
BOSTON SALAD, MAPLE WALNUT BREAD PUDDING 1/6LB	CASE
BOSTON SALAD, PEACH CRISP 1/6LB *FROZEN*	CASE
BOSTON SALAD, PUMPKIN BREAD PUDDING (SEASONAL) 1/6LB *F*	CASE
BOSTON SALAD, RAISIN BREAD PUDDING 1/6LB *FROZEN*	CASE
BOSTON SALAD, STRAWBERRY RHUBARB CRISP 1/6LB *FROZEN*	CASE
KOZY SHACK, CHOCOLATE PUDDING 2/4LB	CASE
KOZY SHACK, RICE PUDDING 2/4LB	CASE
KOZY SHACK, TAPIOCA PUDDING 2/4OZ	CASE

### **LIGHTHOUSE SOUPS & CHOWDERS**

LIGHTHOUSE, BEEF STEW 4/4 LB BAGS	CASE
LIGHTHOUSE, BOSTON CLAM CHOWDER 4/4 LB BAGS	CASE
LIGHTHOUSE, BEEF BARLEY 4/4 LB BAGS	CASE
LIGHTHOUSE, BROCCOLI CHEDDAR 4/4 LB BAGS	CASE
LIGHTHOUSE, BUTTERNUT SQUASH 4/4 LB BAGS	CASE
LIGHTHOUSE, CHICKEN & CORN CHOWDER 4/4 LB	CASE
LIGHTHOUSE, CHICKEN & DUMPLING SOUP 4/4 LB BAGS	CASE
LIGHTHOUSE, CHICKEN NOODLE SOUP 4/4 LB BAGS	CASE
LIGHTHOUSE, CHICKEN STEW (PIE FILLING) 4/4 LB BAGS	CASE
LIGHTHOUSE, CHICKEN TORTILLA SOUP 4/4 LB BAGS	CASE
LIGHTHOUSE, CHICKEN VEGETABLE RICE 4/4 LB BAGS	CASE
LIGHTHOUSE, CORN CHOWDER 4/4 LB BAGS	CASE
LIGHTHOUSE, CREAM OF CRAB SOUP 4/4 LB BAGS	CASE
LIGHTHOUSE, CREAMY MUSHROOM SOUP 4/4 LB BAGS	CASE
LIGHTHOUSE, GROUND BEEF CHILI WITH BEANS 4/4 LB BAGS	CASE
LIGHTHOUSE, HADDOCK CHOWDER 4/4 LB BAGS	CASE
LIGHTHOUSE, ITALIAN WEDDING SOUP 4/4 LB BAGS	CASE
LIGHTHOUSE, KALE & LINGUICA 4/4 LB BAGS	CASE
LIGHTHOUSE, LENTIL SOUP 4/4 LB BAGS	CASE
LIGHTHOUSE, LOADED BAKED POTATO 4/4 LB BAGS	CASE
LIGHTHOUSE, LOBSTER BISQUE 4/4 LB BAGS	CASE
LIGHTHOUSE, MARYLAND VEGETABLE CRAB SOUP 4/4 LB BAGS	CASE
LIGHTHOUSE, MINESTRONE 4/4 LB BAGS	CASE
LIGHTHOUSE, PASTA E FAGIOLI SOUP 4/4 LB BAGS	CASE
LIGHTHOUSE, RED CURRY THAI CHICKEN SOUP 4/4 LB BAGS	CASE
LIGHTHOUSE, SPLIT PEA WITH HAM SOUP 4/4 LB BAGS	CASE
LIGHTHOUSE, TOMATO BISQUE 4/4 LB BAGS	CASE
LIGHTHOUSE, TOMATO & VEGETABLE SOUP 4/4 LB BAGS	CASE
LIGHTHOUSE, TURKEY CHILI 4/4 LB BAGS	CASE
LIGHTHOUSE, VEGETABLE 3 BEAN CHILI 4/4 LB BAGS	CASE
LIGHTHOUSE, WHITE BEAN ESCAROLE 4/4 LB BAGS	CASE
LIGHTHOUSE, WHITE CHICKEN CHILI WITH BEANS 4/4 LB	CASE





# THE *PERFECT PUREE*

Seeking to infuse your culinary creations with the ultimate fresh fruit or vegetable flavors? Never mind peeling, dicing, pureeing, and simmering for those just-right recipe results. Discover why they're revered in restaurant, bakery, hotel, and catering kitchens for their amazing taste and ideal consistency every time. The Perfect Purée products are all natural and developed to be unique and add value for professionals in the foodservice and beverage industry as well as to food-savvy cooking enthusiasts.

**BLACKBERRY  
BLOOD ORANGE  
COCONUT  
LEMON ZEST  
LYCHEE  
MANGO  
ORANGE ZEST  
PASSION FRUIT  
PEAR  
PINK GUAVA  
RED RASPBERRY  
STRAWBERRY  
TAMARIND  
WHITE PEACH**



*6/30oz wide mouthed HDPE jars per case.  
Each jar attaches to a standard bar pour spout.  
Keep frozen. Product good for 7-10 days  
thawed and refrigerated at 40° F and up to 24 months  
frozen from manufactured date.*

**FROZEN**

**Behind the Cape's Best Restaurants**



**Since 1925**

**FRESH. LOCAL. DELIVERED DAILY.**

**www.ringbroswholesale.com | 800-649-9827 | 485 Route 134 | South Dennis, MA 02660**

**FROZEN DIPS / PULP**

FROZEN DIP, GUACAMOLE 12 / 1 LB

CASE

**FROZEN MEAT**BACON, APPLE WOOD SMKD THCK CT **LOCAL (BOSTON BRISKET)** 15 LB AV CASE

BACON, LAYOUT 18-22 SLICE 15LB CASE

SAUSAGE, BREAKFAST 10 LB CASE

SAUSAGE, PATTIES 10 LB CASE

**FROZEN FRENCH FRIES**

FRENCH FRIES, 3/8" UNCOATED (DOUBLE RR) 6/5 LB CASE

FRENCH FRIES, 5/16" SHOESTRING CLEAR CT (CAVENDISH/REGAL) 6/4.5 LB CASE

FRENCH FRIES, 3/8" BATTERED (REGAL KRISPY GOLD) 6/4.5 LB CASE

FRENCH FRIES, 3/8" SWEET POTATO (MCCAIN HARVEST SPLENDOR) 6/2.5LB CASE

**FROZEN FRUITS & VEGETABLES**

FROZEN, APPLES IQF 40 LB CASE

FROZEN, BANANAS CHOPPED 2/5 LB CASE

FROZEN, BANANA LEAVES 20 LB CASE

FROZEN, BLACKBERRIES IQF 10 LB CASE

FROZEN, BLUEBERRIES CULTIVATED 30 LB CASE

FROZEN, BLUEBERRIES WILD 30 LB CASE

FROZEN, CRANBERRIES WHOLE 40 LB CASE

FROZEN, CRANBERRIES SLICED 20 LB CASE

FROZEN, CUT CORN 12/2.5 LB CASE

FROZEN, MANGOES IQF 30 LB CASE

FROZEN, PEAS 12/2.5 LB CASE

FROZEN, PETITE GREEN PEAS 12/2.5 LB CASE

FROZEN, RASPBERRIES IQF 10 LB CASE

FROZEN, STRAWBERRIES IQF 10 LB CASE

FROZEN, STRAWBERRIES SLICED 6/6.5 LB BAG CASE / EACH

FROZEN, ROASTED RED TOMATOES (DIVINA) 4LB EACH

**CAKES / DESSERTS**HOFFS DESSERTS, MISSISSIPPI MUD SQUARE **LOCAL (HOFF'S)** CASE**ICE CREAM**ICE CREAM, VANILLA **LOCAL (HOOD)** 3GAL EACHICE CREAM, CHOCOLATE **LOCAL (HOOD)** 3GAL EACHICE CREAM, COFFEE **LOCAL (HOOD)** 3GAL EACHICE CREAM, STRAWBERRY **LOCAL (HOOD)** 3GAL EACHICE CREAM, VANILLA **LOCAL (GIFFORDS)** 3GAL EACH**PASTA**RAVIOLI, LOBSTER **LOCAL (LILY'S FRESH PASTA)** 6 LB CASERAVIOLI, WILD MUSHROOM **LOCAL (LILY'S FRESH PASTA)** 6 LB CASEPASTA, LINGUINI **LOCAL (LILY'S FRESH PASTA)** 9 LB CASEPASTA, BUCATINI BLACK PEPPER **LOCAL (LILY'S FRESH PASTA)** 9 LB CASE**PASTRY SHEETS**

PASTRY SHEETS, PUFF PASTRY 10X15 CASE

**PUREES (THE PERFECT PUREE)**

PUREE, BLACKBERRY 6/30 OZ CASE / EACH

PUREE, BLOOD ORANGE CONCENTRATE 6/30 OZ CASE / EACH

PUREE, COCONUT 6/30 OZ CASE / EACH

PUREE, LEMON ZEST 6/30 OZ CASE / EACH

PUREE, LYCHEE 6/30 OZ CASE / EACH

PUREE, MANGO 6/30 OZ CASE / EACH

PUREE, ORANGE ZEST 6/30 OZ CASE / EACH

PUREE, PASSION FRUIT 6/30 OZ CASE / EACH

PUREE, PEAR 6/30 OZ CASE / EACH

PUREE, PINK GUAVA 6/30OZ CASE / EACH

PUREE, RASPBERRY 6/30 OZ CASE / EACH

PUREE, STRAWBERRY 6/30 OZ CASE / EACH

PUREE, TAMARIND 6/30 OZ CASE / EACH

PUREE, WHITE PEACH 6/30 OZ CASE / EACH



# LILLY'S FRESH PASTA

Our fresh pasta is made from 100% Semolina flour shipped from the North Dakota flour mills, known for producing the best flour in the country. We turn this nutritious flour into fresh gourmet pasta with the addition of grade A eggs and filtered water – and that's it.



## Lobster Ravioli 6lb

Large Hexagon, 100% Lobster

## Wild Mushroom Ravioli 6lb

Large Hexagon, Roasted Porcini, Portobello, Shiitake, Oyster, Wood Ear, and Black Trumpet mushrooms folded with imported fontina cheese and fresh thyme.

## Linguini 9lb

Translating to “little tongues”, linguine is made in long, slender, flat strips and often served with seafood or pesto

## Black Pepper Bucatini 9lb

Long rod-shaped pasta with a hollow center, perfect for capturing light sauces.

*Please call for additional inventory*



Locally Made  
in Everett, MA

FROZEN

Behind the Cape's Best Restaurants



Since 1925

**FRESH. LOCAL. DELIVERED DAILY.**

www.ringbroswholesale.com | 800-649-9827 | 485 Route 134 | South Dennis, MA 02660



# BOSTON BRISKET

Boston Brisket Co. is Boston's leading producer of fine meat products since 1982.



Applewood Smoked  
Thick Sliced Bacon  
*15lb avg*



Locally Made in Roxbury, MA

# JONES FARM

Breakfast sausage is our signature product at Jones Dairy Farm. We use the same ingredients that Milo Jones used more than 127 years ago when he started the company—pork, water, salt and spices. The result is an array of all-natural, Certified Gluten-Free sausage links, patties and roll sausage that have become a staple on breakfast tables throughout the country.



Breakfast Link Sausages  
*10lb*

Sausage Patties  
*10lb*

FROZEN

# BOULART BAKERY

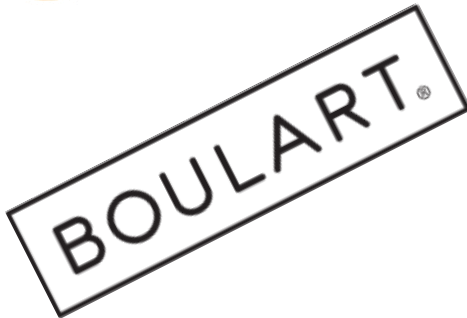
Baked in Quebec we strive to create uncompromisingly authentic bread, made only with the finest ingredients. Breads that are always soft and rich, always flavorful, and adapted to tastes the world over.



**Ciabatta Baguette**

18" 18/11.5oz PAR

*Bags available for retail sale*



**Ciabatta Allegro  
Sandwich Roll**

6" 48/3.2oz PAR



**Artisan Square  
Burger Roll (Sliced)**

3.5" 80/3.5oz PAR

# FIREKING BAKING

Fireking became known as an innovator in the baking industry, offering many different types of artisan breads. Fireking Baking Company operates from a state-of-the-art, nut-free, HACCP compliant facility.



**Fireking  
Brioche Lobster Rolls**

6" 56ct FB

BREAD

Behind the Cape's Best Restaurants



Since 1925

**FRESH. LOCAL. DELIVERED DAILY.**

www.ringbroswholesale.com | 800-649-9827 | 485 Route 134 | South Dennis, MA 02660

### **TRIBECA BAKERY**

BURGER ROLLS, CHALLAH (BRIOCHE) 60 CT **FB**

CASE

SLIDER ROLLS, CHALLAH (BRIOCHE) 192 CT **FB**

CASE

### **BOULART BAKERY**

BAGUETTE, CIABATTA 11.5OZ 18 CT **PAR** 22100

CASE

SANDWICH ROLLS, CIABATTA ALLEGRO 3.2OZ 6" 48 CT **PAR** 13703

CASE

BURGER ROLLS, ARTISAN SQUARE (SLICED) 3.5OZ 3.5" 80 CT **PAR** 13607

CASE

### **FIREKING BAKING**

LOBSTER ROLLS, BRIOCHE 6" 56 CT **FB**

CASE

### **NASHOBA BROOK BAKERY**

HALF DELI, SOURDOUGH 6/21 OZ **FB LOCAL**

CASE

HALF DELI, 7 GRAIN 6/21 OZ **FB LOCAL**

CASE

HALF DELI, WHOLE WHEAT 6/21 OZ **FB LOCAL**

CASE

HALF DELI, ROSEMARY GARLIC 6/20 OZ **FB LOCAL**

CASE

HALF DELI, HARVEST 6/23 OZ **FB LOCAL**

CASE

HALF DELI, PEPPER JACK 6/21 OZ **FB LOCAL**

CASE

HALF DELI, RYE 6/19 OZ **FB LOCAL**

CASE

HALF DELI, FRENCH 6/19 OZ **FB LOCAL**

CASE

DINNER ROLLS, MIXED 36 SOURDGH, 36 FRNCH, 36 RSMRY GR LIC 108 CT **FB LOCAL**

CASE

DINNER ROLLS, FRENCH 108 CT **FB LOCAL**

CASE

### **OMG BAGELS**

BAGELS, ASSORTED (12 PL, 6 SES, 6 RSN, 6 EVTH, 6 ON) **LOCAL** 6 / 6CT (36CT) **FB**

CASE

### **OTHER**

ENGLISH MUFFINS (GOLD MEDAL) 10Z 6CT **FB**

EACH

ENGLISH MUFFINS, CINNAMON RAISIN **LOCAL (EAST WEST)** 12 / 4CT (48CT) **FB**

CASE

ENGLISH MUFFINS, ORIGINAL **LOCAL (EAST WEST)** 12 / 4CT (48CT) **FB**

CASE

ENGLISH MUFFINS, WHOLE WHEAT **LOCAL (EAST WEST)** 12 / 4CT (48CT) **FB**

CASE

PITA (SYRIAN) POCKET 8IN **FB**

EACH

**FB** FULLY BAKED

**PAR** PAR BAKED

## **OMG BAGELS**



Finally! OMG! Bagels has brought a delicious New York style bagel to the Boston area. Our bagels are boiled, baked. One taste and you will agree that these bagels rival even the best bagels in New York in terms of size, flavor, texture, and quality of in-

**Assorted NY Style Bagels**

*Plain, Sesame, Raisin, Everything, Onion*

*6/6ct (36ct) **FB***

## **TRIBECCA BAKERY**

*Tribeca Oven par-baked breads are baked to old-world standards and flash-frozen to preserve the complexity of flavors, the rich and chewy textures.*



**Challah (Brioche Style) Burger Roll**  
3.5" 60/3.5oz **FB**

**Challah (Brioche Style) Slider Rolls**  
192ct **FB**





# EAST WEST

These English muffins are handcrafted for East West using only natural ingredients. This two day painstaking process by the baker allows for a look and taste that distinguishes the product from any other English muffins on the market. Your search is over for a premium English muffin to elevate your meal.



*All Natural - Handcrafted*  
**Original English Muffins**  
**Cinnamon Raisin English Muffins**  
**Whole Wheat English Muffins**  
*12 x 4pk*  
*(48 muffins per case)*  
*Sold by frozen and by the case only.*  
*3 day shelf life once thawed.*



**Locally Made in Boston, MA**

**BREAD**

**Behind the Cape's Best Restaurants**



**Since 1925**

**FRESH. LOCAL. DELIVERED DAILY.**

**www.ringbroswholesale.com | 800-649-9827 | 485 Route 134 | South Dennis, MA 02660**

# NASHOBA BROOK

Passion and artistry are the heart of Nashoba Brook Bakery, but the fuel that feeds our hearth is wild yeast. Captured using Concord grapes found on the banks of the Nashoba Brook, this organic yeast feeds our doughs daily. The slow rise of each hand-formed loaf creates enzymes that break down the complex carbohydrates in flour, releasing vitamins and making it easier for your body to digest the goodness of Nashoba breads. "Slow Rise" also stands in contrast to the culture of instant gratification, and we believe that anything worth having is worth waiting for.



## Retail Breads

Half Deli, Sourdough  
Half Deli, 7 Grain  
Half Deli, Whole Wheat  
Half Deli, Rsmry Garlic  
Half Deli, Harvest  
Half Deli, Pepper Jack  
Half Deli, Rye  
Half Deli, French

## Foodservice Breads

Mixed Dinner Rolls  
(Sourdough, French, Rosemary Garlic)

French Rolls



**Locally Made in Concord, MA**

Behind the Cape's Best Restaurants



Since 1925

**FRESH. LOCAL. DELIVERED DAILY.**

www.ringbroswholesale.com | 800-649-9827 | 485 Route 134 | South Dennis, MA 02660





### General Information

Office Hours are: Monday - Friday 7am - 5pm,  
Saturday 7am - 12pm.

Our office is closed on Sunday but we make  
deliveries and staff is available to assist you.

### Customer Service

Phone: 1-800-649-9827

Phone: 508-394-5022

Fax: 508-394-0992

[www.ringbroswholesale.com](http://www.ringbroswholesale.com)

E-mail: [customerservice@ringbroswholesale.com](mailto:customerservice@ringbroswholesale.com)

### Billing Address

P.O. Box 1475

South Dennis, MA 02660

### Physical Address

485 Route 134

South Dennis, MA 02660

### Retail Store

Ring Bros. Marketplace

485 Route 134, South Dennis, MA 02660

Phone: 508-394-2244

Fax: 508-394-0121

Website: [www.ringbrosmarketplace.com](http://www.ringbrosmarketplace.com)

**Ring Bros.**  
**Marketplace**