



**BEHIND THE CAPE'S  
BEST RESTAURANTS**

**FRESH.  
LOCAL.**

**Product Guide**

**800-649-9827**

**[www.ringbroswholesale.com](http://www.ringbroswholesale.com)**







The mission of Ring Bros. Wholesale is to responsibly source the highest quality fresh produce and specialty foods for chefs and retailers on Cape Cod and in Southeastern Massachusetts.

The company got its start more than 97 years ago; Stephen Ring Sr, a teenager, and his older brother, Edmund, peddled produce from a horse-drawn wagon along the streets of Boston. "Sweet, juicy peaches!" Stephen would yell as he pulled up to a street corner. "Quarter a dozen!" Later, Stephen would take his sons, Ed and Stephen Ring Jr., along to help.

The Rings built a devoted customer base by hand selecting the finest fruits and vegetables from farmers locally, and from farms worldwide that shared their standards for sustainable agricultural practices and quality.

With these values in mind, Ed Ring opened the first permanent wholesale and retail location of Ring Bros. on Cape Cod in the 1970s in Harwich and a specialty store, Broadway Marketplace, near Harvard Square in 1992. Ring Bros. moved from Harwich to its current location in South Dennis in 2001 where it is now owned and operated by Ed, his wife and his son.



The South Dennis location offers 16,000 square feet of retail space and expanded capacity for wholesale operations. We invite you to visit our specialty retail store and to tour our cutting edge wholesale facility at 485 Route 134 in South Dennis, Cape Cod.

# About Us

## *Members of The Massachusetts Restaurant Assoc.*

We are associate members of the Massachusetts Restaurant Association! The MRA is a trusted not-for-profit trade association committed to the advancement of the food and beverage industry in our state. The MRA helps operators succeed by providing information, education, government advocacy, cost-savings programs, and networking opportunities.



## *Members of The American Culinary Federation*

Our wholesale manager, Rich Mulcahy represents Ring Bros. Wholesale as an associate member of the American Culinary Federation. The American Culinary Federation, Inc. (ACF), a professional organization for chefs and cooks, was founded in 1929 in New York City. ACF is now the largest professional chefs' organization in North America. The ACF is made up of more than 15,000 members belonging to more than 150 chapters in four regions across the U.S. Today, ACF is the leader in offering educational resources, training, apprenticeship, competitions and programmatic accreditation designed to enhance professional growth for all current and future chefs and pastry chefs.



## *Local Service*

We are based right here on Cape Cod so servicing our customers is what we do best. With delivery seven days a week from Plymouth to Provincetown we can react to ordering errors or issues in the kitchen quickly because of our location.



# *This is How*



## *Quality Product - Higher Yield*

Customers have told us that they want quality at a good price. We can compete because we buy direct from farms around the country. We buy only quality driven produce brands on the market which tend to provide a higher yield with less shrink, ultimately saving our customers money. Plus each and every case of product is looked over for freshness before it is sent out on a truck to your location.



## *Our Commitment To LOCAL*

We understand the nature of business on Cape Cod because we live here too. Our economy is driven by tourism and a 'local taste' is often requested. We support small scale agriculture by purchasing fruit and vegetables from Cape Cod and surrounding farmers. For 2022 we have enhanced our offerings by supplying only cage free eggs, and stocking trending ethnic seasonings, plant based burgers, chicken and sausage, as well as seasonal produce from Crow Farm in Sandwich. Take a look for  labels throughout this guide for locally sourced items.



## *Loyalty and Consistency*

We work as an extension of your team, a wholesaler you can trust to deliver your order on time, a partner that is invested in helping you build your restaurant or retail business. We try and go beyond what you might expect. Our customers buy from us because we have proven ourselves, which brings loyalty to our company and yours.



# *We Excel*

# Ordering Methods

Customers may place an order 24 hours per day, 7 days per week.  
*For next day delivery please order by midnight.*

## Order Online

***www.ringbroswholesale.com***

Powered by iBistro, our ordering system eliminates the majority of your manual procurement activities so you can focus on customer-facing initiatives.

- ♦ Browse through our online catalog
- ♦ Create custom order guides
- ♦ Search our inventory with pricing
- ♦ Set pars and sequences
- ♦ Create reports on usage trends, order history
- ♦ Order at your convenience



## Order By Phone

***800-649-9827***

During office hours, our friendly staff will take your order. After business hours, place your order using our touchtone ordering system.

## Order By Fax

***508-394-0992***

## Email Your Order

***orders@ringbroswholesale.com***

# Ordering

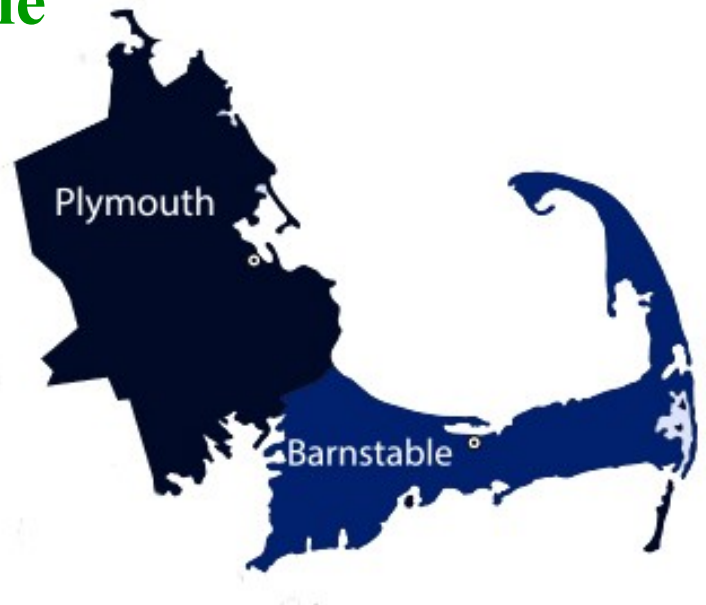


## New Accounts

To open an account with us or to obtain wholesale pricing, please call, email or fill out our credit application found on our website. A representative will follow up with you immediately.

## Delivery Area and Schedule

Our delivery area is Cape Cod and Southeastern Massachusetts. Deliveries are made seven days per week to most locations.



## Payment

Payment terms will be established when you open your account with us. To apply for 30 days terms, please fill out our online credit application found online or call customer service for more information.



We've partnered with eBizCharge for the convenience of our customers. This allows customers with approved terms to pay by credit card or ach, and apply payments to specific invoices. Please visit our website to register.



# Delivery

# Community Support

## Cape Kids Meals

The mission of Cape Kid Meals is to provide food insecure children with food over the weekends during the school year. Food insecure children are those who are dependent on free breakfast and lunch programs in the public schools.



Ring Bros. Wholesale works with Cape Kids Meals and our retail store to provide over 1000 pieces of fruit every week to these food insecure children on weekends throughout the school year.

In 2020 the pandemic drastically impacted children who rely on Cape Kid's Meals' food bags for the weekend. This created a challenge for both volunteers in the program and student access to the food. To solve this, remote only students are provided food bags at "grab and go" sites around the Cape.

Ring Bros. Marketplace hosts annual fundraisers throughout the year to help support Cape Kids Meals. Customers donate to this cause and in 2020 raised \$9,708 to support the need.

## Dennis Yarmouth Cardinals

Ring Bros. Marketplace is proud to sponsor the Cardinals, a minors team that plays in the Dennis Yarmouth Baseball League. Our sponsorship provides the team with uniforms but, more importantly, helps keep tuition down, giving every child the opportunity to play.



# Community



# ***Food Safety Program Goals***

At Ring Bros. Wholesale food safety is an integral part of our entire operation. It also includes non-production items such as training of employees and training materials.

The goal of the food safety program is to institute a proactive system for its operation whereby any potential product hazards are anticipated and controlled from product reception through distribution. Food safety and quality control is the responsibility of all the employees of Ring Bros. Wholesale, affiliated services and product providers. Management has provided the tools and established guidelines for producing safe, wholesome, quality products. All employees are accountable for consistently maintaining these standards.

The food safety program has been established with the help of the company officers. Although the burden of food safety and quality control is in the hands of management and supervisors, all employees serve as inspectors when product moves through their area. Ring Bros. Wholesale's employees are authorized to hold or reject product found to be out of compliance, subject to the evaluation and final approval of authorized management.

## ***What Does The Program Consist Of?***

The purpose of this food safety plan is to help ensure that environmental conditions and practices are sound and reduce the risk of unsafe products.

This plan is designed to address specific points of our process, according to the type of product we market, and the operations associated with the storage, preparation and display of the product.



# ***Food Safety***



## Testimonials

“From an excellent sales team, quality products (fresh and specialty) and a reliable delivery team, Ring Bros. Wholesale continues to set the bar high in foodservice. You can’t ask for anything better than having the availability to source local products while supporting a great local business.”

**Chris Kolwicz**

*Executive Chef at Wychmere Beach Club, Harwich Port*

“In my 30 plus years in catering industry I've been working with Ring Bros. and their team for over 20 years. I find their sales team and product quality excellent. My client requests for specialty items were frequent and Ring Bros were always able to procure it or hand pick produce upon request. Because of their personalized service and attention to detail, I will always be loyal to Ring Bros. Wholesale.”

**Jennifer Mentzer**

*General Manager at Wayside Inn, Chatham*

"The produce is always fresh, deliveries dependable and as promised, and the sales team makes it happen."

**Eric Bishoff**

*Executive Chef at Quarterdeck Restaurant, Falmouth*

"The expansive Asian selection allows me to create without limits."

**John Wilson**

*Executive Chef and Owner at Water Street Kitchen, Woods Hole*

"Ring Bros. works with local farmers to source produce my customers expect."

**Maria Pollio**

*Executive Chef at Del Mar Bar & Bistro, Chatham*



# Contents

1	Fruit
6	Vegetables
17	Organic Veg
18	Organic Fruit
19	Dairy
23	Cheese
25	Beverages
31	Specialty Foods
43	Prepared Foods
45	Frozen
49	Bread

# LOCAL PRODUCE

## Thacher Cranberries

We work with this local grower in the fall when cranberries are abundant. Thacher Farms doesn't pick their berries early but instead waits until they are ripe, and bright red. These cranberries get delivered to our warehouse in wooden crates weekly from the grower.



**FRESH CRANBERRIES**



**Locally Grown in Harwich, MA**

## Wilson Farm

Founded in 1884 in Lexington, Massachusetts, Wilson Farm is a family owned and operated farm and farm stand. Today, Wilson Farm consists of over 500 acres of farmland, two retail farm stands, an open-air nursery and garden center, and a state-of-the-art greenhouse.



**Locally Grown  
in Lexington, MA**

**APPLES (SEASONAL)  
PLANTS AND FLOWERS**

Behind the Cape's Best Restaurants



Since 1925

**FRESH. LOCAL. DELIVERED DAILY.**

www.ringbroswholesale.com | 800-649-9827 | 485 Route 134 | South Dennis, MA 02660



**APPLES**

APPLES, BRAEBURN 80 CT  
 APPLES, CORTLAND 100 CT  
 APPLES, CORTLAND **LOCAL** 40 LB  
 APPLES, EMPIRE 80 CT  
 APPLES, EMPIRE **LOCAL** 40 LB  
 APPLES, FUJI 80 CT  
 APPLES, GALA 80 CT  
 APPLES, GOLDEN DELICIOUS 80 CT  
 APPLES, GRANNY SMITH 88 CT / 125 CT  
 APPLES, HONEYCRISP 72 CT / 80 CT  
 APPLES, JONAGOLD 80 CT  
 APPLES, LADY 72 CT / 80 CT  
 APPLES, PINK LADY 80 CT  
 APPLES, MCINTOSH 80 CT / 140 CT / 3LB BAGS  
 APPLES, MCINTOSH **LOCAL** 40 LB  
 APPLES, MACOUN 80 CT  
 APPLES, MACOUN **LOCAL** 40 LB  
 APPLES, RED DELICIOUS 88CT / 125 CT  
 APPLES, SPENCER **LOCAL** 40 LB

**APRICOTS**

APRICOTS 20 LB

**AVOCADOS**

AVOCADOS, HASS BREAKING 48 CT / GREEN 48 CT / RIPE 48 CT

**BANANAS**

BANANAS, BREAKING 40 LB / GREEN 40 LB / RIPE 40 LB  
 BANANAS, PETITE 150 CT  
 PLANTAINS 40 LB

**BERRIES**

BERRIES, BLACK 12 CT PKG  
 BERRIES, BLUE 12 CT PKG  
 BERRIES, BLUE **LOCAL** 12 CT PKG  
 BERRIES, BLUE WILD  
 CRANBERRIES, LOOSE (WOODEN CRATE) 30 LB **LOCAL**  
 CRANBERRIES, BAG (WOODEN CRATE) 12/2 LB **LOCAL**  
 BERRIES, RASPBERRIES 12 CT PKG  
 BERRIES, STRAWBERRIES 12 CT PKG  
 BERRIES, STRAWBERRIES **LOCAL** 12CT PKG  
 BERRIES, STRAWBERRIES, CLAMSHELL 8 CT PKG  
 BERRIES, STRAWBERRIES, LONG STEM 4 CT PKG

**CHERRIES**

CHERRIES, 18 LB  
 CHERRIES, RAINIER 18 LB

**CIDER**

CIDER, APPLE 9/64 OZ / 4/128 OZ **LOCAL**

**CLEMENTINES**

CLEMENTINES 5 LB GIFT BOX  
 CLEMENTINES, 10/3 LB BAGS

**COCONUTS**

COCONUTS

**CUT FRUIT**

FRUIT SALAD, ALL NATURAL **LOCAL (FRESH VALLEY FOODS)** GAL EACH

**FIGS**

FIGS, BLACK 12 PINT  
 FIGS, CALMYRNA 12 PINT /TRAY

**GRAPEFRUIT**

GRAPEFRUIT, RUBY RED 32 CT / 48CT

**GRAPES**

GRAPES, BLACK SEEDLESS  
 GRAPES, CONCORD (SEASONAL) 12 PK  
 GRAPES, GREEN SEEDLESS  
 GRAPES, RED SEEDLESS

**KIWI FRUIT**

KIWI FRUIT 9 KILO VOLUME PACK

**LEMONS**

LEMONS, 95 CT / 140 CT / 165CT  
 LEMONS, MEYER

**LIMES**

LIMES, 54 CT / 200CT  
 LIME LEAVES

CASE / EACH  
 CASE / EACH  
 CASE / EACH  
 CASE / EACH  
 CASE / EACH  
 CASE / EACH  
 CASE / EACH  
 CASE / EACH  
 CASE / EACH  
 CASE / EACH  
 CASE / EACH  
 CASE / EACH  
 CASE / EACH  
 CASE / EACH  
 CASE / EACH  
 CASE / EACH  
 CASE / EACH  
 CASE / EACH

CASE / LB

CASE / EACH

CASE / LB  
 CASE / EACH  
 CASE / LB

CASE / EACH  
 CASE / EACH  
 CASE / EACH  
 CASE / EACH  
 CASE / LB  
 CASE / EACH  
 CASE / EACH  
 CASE / EACH  
 CASE / EACH  
 CASE / EACH  
 CASE / EACH  
 CASE / EACH

CASE / LB  
 CASE / LB

CASE / EACH

EACH  
 CASE / EACH

CASE

EACH

CASE / EACH  
 CASE / EACH

CASE / EACH

CASE / LB  
 CASE / EACH  
 CASE / LB  
 CASE / LB

CASE / EACH

CASE / EACH  
 CASE

CASE / EACH  
 LB

LOCAL  
PRODUCTLOCAL  
PRODUCTLOCAL  
PRODUCTLOCAL  
PRODUCT

# LOCAL PRODUCE

## Fresh Valley Foods

Fresh Valley Foods Co is a processor of fresh cut fruits and vegetables for the New England and New York Metro areas. They are based out of Haverhill, MA and cut daily to ensure freshness. All products are all natural and contain no preservatives.

### ALL NATURAL FRUIT SALAD

(Cantaloupe, Honeydew, Pineapple, Grapes, Orange, Water, Sugar, Citric Acid, Ascorbic Acid)  
8 LB TUB



Locally Cut in Haverhill, MA

## Crow Farm

The forty-acre farm is run by Howard Crowell his son Paul, and grandson Jason. Crow Farm offers a wide variety of herbs,, vegetables, and fruit. They are one of the only farms on Cape Cod to grow their own apples (15 unique varieties!), pears, peaches, and sweet corn.

### PEPPERS AND ZUCCHINI TOMATOES



Locally Grown in Sandwich, MA

Behind the Cape's Best Restaurants



Since 1925

**FRESH. LOCAL. DELIVERED DAILY.**

www.ringbroswholesale.com | 800-649-9827 | 485 Route 134 | South Dennis, MA 02660

**MANGOES**

MANGOES

CASE / EACH

**MELONS**

MELONS, CANTALOUPE 12 CT

CASE / EACH

MELONS, CASABA 6 CT

CASE / EACH

MELONS, CRENSHAW 6 CT

CASE / EACH

MELONS, HONEYDEW 6 CT

CASE / EACH

MELONS, NATIVE **LOCAL**

CASE / EACH

MELONS, PERSIAN 5 CT

CASE / EACH

MELONS, WATERMELON SEEDLESS

EACH

**MINIOLAS**

MINIOLAS 56 CT

CASE / EACH

**NECTARINES**

NECTARINES, NATIVE 20LB

CASE / LB

NECTARINES, WHITE 20 LB

CASE / LB

NECTARINES, YELLOW 20 LB

CASE / LB

**ORANGES**

ORANGES, BLOOD 44 CT

CASE / EACH

ORANGES, CALIFORNIA 56 CT / 88 CT / 113 CT

CASE / EACH

ORANGES, CARA CARA 44 CT

CASE / EACH

ORANGES, FLORIDA 80 CT / 100 CT

CASE / EACH

ORANGES, TEMPLE

CASE / EACH

**PAPAYAS**

PAPAYAS, GREEN 12 CT

CASE

PAPAYAS, MARADOL 12 CT

CASE / EACH

**PASSION FRUIT**

PASSION FRUIT 18 CT

CASE / EACH

**PEACHES**

PEACHES, EASTERN 2 1/4" / 2 1/2" / 2 3/4" 25 LB

CASE / LB

PEACHES, NATIVE 20 LB

CASE / LB

PEACHES, YELLOW 20 LB TRAY PACK

CASE / LB

PEACHES, WHITE 20 LB TRAY PACK

CASE / LB

**PEARS**

PEARS, ANJOU 90 CT / 150 CT

CASE / EACH

PEARS, ASIAN 16 CT

CASE / EACH

PEARS, BARTLETT 100 CT

CASE / EACH

PEARS, BOSC 100 CT

CASE / EACH

PEARS, QUINCE

CASE / EACH

PEARS, RED 40 CT

CASE / EACH

PEARS, SECKELL 117 CT

CASE / EACH

**PINEAPPLE**

PINEAPPLES, BABY

CASE

PINEAPPLES, GOLDEN RIPE 7 CT

CASE / EACH

**PLUMS**

PLUMS, BLACK

CASE / LB

PLUMS, EMPRESS

CASE / LB

PLUMS, PRUNE

CASE / LB

PLUMS, RED

CASE / LB

PLUMS, PLUOT

CASE / LB

**POMEGRANATES**

POMEGRANATES 24 CT

CASE / EACH

**RHUBARB**

RHUBARB 15 LB / 20 LB

CASE / LB

**STAR FRUIT**

STAR FRUIT 25 CT

CASE

**TANGELOS**

TANGELOS 56 CT

CASE / EACH

**TANGERINES**

TANGERINES 80 CT

CASE / EACH



# LOCAL PRODUCE



## Philbin Orchards

Philbin Orchards is a small farm which produces some of the best local produce available. We have been working with the Philbin family for about 35 years. One of the Philbin's signature products are their famous peaches which are sweet, and perfect.

**CORTLAND, MCINTOSH, MACOUN & SPENCER APPLES  
PEACHES  
GREEN PEPPERS  
SUMMER & ZUCCHINI SQUASH**



**Locally Grown in Sterling, MA**



## Backyard Farms

Fresh tomatoes grown in New England, year-round. What's the secret to our freshness?

Backyard Farms tomatoes stay on the vine until the last

possible second to ensure maximum ripeness. Our team of personal gardeners care for their rows of tomatoes with a sense of pride, and pick them only when red and ripe.

**CLUSTER TOMATOES  
PEARLS "COCKTAIL" TOMATOES**



**Locally Grown in Madison, ME**

Behind the Cape's Best Restaurants



Since 1925

**FRESH. LOCAL. DELIVERED DAILY.**

www.ringbroswholesale.com | 800-649-9827 | 485 Route 134 | South Dennis, MA 02660

# LOCAL PRODUCE

## Confreda Farms

The Confreda family began farming in 1922. Farming just over 400 acres of land in Cranston and Warwick, their operations represent one of the oldest and largest commercial vegetable farms in the state of Rhode Island. Through the years, the Confreda family has worked to provide customers with high quality produce, always expanding their efforts to bring customers into the family farm experience.



### CORN SQUASH



Locally Grown in Cranston, RI

Behind the Cape's Best Restaurants



Since 1925

**FRESH. LOCAL. DELIVERED DAILY.**

[www.ringbroswolesale.com](http://www.ringbroswolesale.com) | 800-649-9827 | 485 Route 134 | South Dennis, MA 02660

# LOCAL PRODUCE

## PIONEER VALLEY GROWERS ASSOCIATION

### Pioneer Valley Growers Association

The Pioneer Valley Growers Association is a cooperative of farmers located in the Pioneer Valley of Western Massachusetts. The farmland in the Pioneer Valley has some of the richest soil in the world. This, combined with state of the art cooling technology, allows our farmers to produce the finest looking and best tasting vegetables around.

APPLES  
BLUEBERRIES / STRAWBERRIES  
BOK CHOY / CHINESE CABBAGE  
GREEN BEANS  
BUNCHED & CUT BEETS  
RED / GREEN CABBAGE  
NAPPA / SAVOY CABBAGE  
BUNCHED / CUT CARROTS  
SWEET CORN  
CUCUMBERS  
EGGPLANT  
CILANTRO / DILL  
GREEN KALE  
LEEKs  
LEAF LETTUCE  
ROMAINE LETTUCE  
RED / YELLOW ONIONS  
PARSNIPS  
SUGAR SNAP / ENGLISH PEAS  
JALAPENO / CUBAN PEPPERS  
GREEN PEPPERS  
POTATOES / RAMPS  
PUMPKINS / GOURDS  
BUTTERNUT / FALL SQUASH  
SUMMER / ZUCCHINI SQUASH  
GREEN / RED SWISS CHARD  
TOMATOES  
WHITE / PURPLE TOP TURNIPS



Locally Grown in Pioneer Valley, MA

Behind the Cape's Best Restaurants



Since 1925

**FRESH. LOCAL. DELIVERED DAILY.**

www.ringbroswholesale.com | 800-649-9827 | 485 Route 134 | South Dennis, MA 02660



**ARTICHOKES**

ARTICHOKES 24 CT / 30 CT

CASE / EACH

ARTICHOKES, BABY

CASE / PKG

**ASIAN VEGETABLES**

ASIAN, BABY BOK CHOY 30 LB

CASE / LB

ASIAN, BOK CHOY 30 LB

CASE / LB

ASIAN, BOK CHOY **LOCAL** 30 LB

CASE / LB

ASIAN, NAPA CABBAGE 30 LB / 40 LB

CASE / LB

ASIAN, NAPA CABBAGE **LOCAL** 30 LB

CASE / LB

**ASPARAGUS**

ASPARAGUS, 11 LB, 28LB

CASE / LB

ASPARAGUS, JUMBO 11 LB

CASE / LB

ASPARAGUS **LOCAL**

CASE / LB

ASPARAGUS, PEELED JUMBO *SPECIAL ORDER ITEM*

CASE

ASPARAGUS, PURPLE 11LB *SPECIAL ORDER ITEM*

CASE / LB

ASPARAGUS, WHITE 11LB *SPECIAL ORDER ITEM*

CASE / LB

**BEANS**

BEANS, FAVA 24 LB

CASE / LB

BEANS, GREEN 24 LB

CASE / LB

BEANS, GREEN **LOCAL** 25 LB

CASE / LB

BEANS, GREEN SNIPPED 2/5 LB BAG

CASE / EACH

BEANS, HERICOT VERTS 5LB BOX

CASE

BEANS, POLE 24 LB

CASE / LB

BEANS, SEA 10 LB

CASE / LB

BEANS, SHELL 24 LB

CASE / LB

BEANS, SUNSHINE MEDLEY 2/5 LB BAG

CASE / EACH

BEANS, WAX 24 LB

CASE / LB

BEANS, WAX SNIPPED 2/5 LB BAG

CASE / EACH

**BEETS**

BEETS, BABY 24 CT

CASE / EACH

BEETS, BABY CHIOGGA 24 CT

CASE / EACH

BEETS, BABY GOLD 24 CT

CASE / EACH

BEETS, BUNCHED 12 CT

CASE / BUNCH

BEETS, BUNCHED **LOCAL** 12 CT

CASE / BUNCH

BEETS, CHIOGGA 24 CT CUT

CASE / EACH

BEETS, CUT 25 LB

CASE / LB

BEETS, CUT **LOCAL** 25 LB

CASE / LB

BEETS, CUT YELLOW 25 LB

CASE / LB

BEET GREENS 10 LB

CASE / LB

**BROCCOLI**

BROCCOLI CROWNS 20 LB

CASE / LB

BROCCOLI FLORETTES 4/3LB

CASE / LB

BROCCOLI SLAW 5LB

CASE / LB

BROCCOLI RABE 10 CT

CASE / LB

BROCCOLINI 18 CT BUNCH

CASE / EACH

**CABBAGE**

CABBAGE, GREEN 50 LB

CASE / EACH

CABBAGE, GREEN **LOCAL** 50 LB

CASE / EACH

CABBAGE, RED 50 LB

CASE / LB

CABBAGE, RED **LOCAL** 50 LB

CASE / EACH

CABBAGE, RED SHREDDED 5 LB BAG

EACH

CABBAGE, SAVOY 50 LB

CASE / LB

CABBAGE, SAVOY **LOCAL** 50 LB

CASE / EACH

**CARROTS**CARROTS, BABY BUNCHED 24 CT *SPECIAL ORDER ITEM*

CASE / EACH

CARROTS, BABY PEELED WITH TOPS 5 LB

CASE

CARROTS, BABY RAINBOW PEELED 5 LB

EACH

CARROTS, BUNCHED 24 CT

CASE / BUNCH

CARROTS, BUNCHED **LOCAL** 24 CT

CASE / BUNCH

CARROTS, CELLO 48/1 LB PKG

CASE / EACH

CARROTS, CUTS 25 LB

CASE / LB

CARROTS, DICED 5 LB

CASE / LB

CARROTS, STICKS 4/5 LB BAG

EACH

CARROTS, CHEF 50 LB

CASE / LB

CARROTS, MINI 30/1 LB PKG

CASE / EACH

CARROTS, MINI SLIMS 25 LB BAG

EACH

CARROTS, PEELED 25 LB

CASE

CARROTS, SHREDDED 5 LB

EACH

CARROTS, SNACK SIZE (INSTITUTIONAL) T-200

CASE



**CAULIFLOWER**

CAULIFLOWER 12 CT  
 CAULIFLOWER, BABY 24 CT  
 CAULIFLOWER, BABY PURPLE 24 CT  
 CAULIFLOWER, FLORETTES 4/3 LB  
 CAULIFLOWER, ROMANESCO 12 CT  
 CAULIFLOWER, ORANGE / PURPLE 12 CT

CASE / EACH  
 CASE  
 CASE  
 EACH  
 CASE / EACH  
 CASE / EACH

**CELERY**

CELERY, DICED 5 LB BAG  
 CELERY, HEARTS 12 CT PKG / 30/8 OZ PKG  
 CELERY, ROOT 20 LB  
 CELERY, SLEEVED 24 CT  
 CELERY, STICKS 5 LB BAG  
 CELERY, 24 CT

EACH  
 CASE / EACH  
 CASE / LB  
 CASE  
 EACH  
 CASE / EACH

**CHICORY**

CHICORY 12 CT

CASE / EACH

**SLAW**

BROCCO-SLAW 5 LB BAG  
 COLE SLAW, SHREDDED 4/5 LB BAG  
 COLE SLAW, DICED 4/5 LB BAG

EACH  
 CASE / EACH  
 CASE / EACH

**COLLARD GREENS**

COLLARD GREENS 12 CT  
 COLLARD GREENS **LOCAL** 22 LB

CASE / LB  
 CASE / BUNCH

**CORN**

CORN 48 CT  
 CORN **LOCAL** 60 CT  
 CORN, SHUCKED 24 CT **PRE-ORDER**

CASE / EACH  
 CASE / EACH  
 CASE / EACH

**CUCUMBERS**

CUCUMBERS **LOCAL**  
 CUCUMBERS, ENGLISH 12 CT  
 CUCUMBERS, PICKLING 40 LB  
 CUCUMBERS, PICKLING **LOCAL** 22 LB / 50 LB  
 CUCUMBERS, SUPER SELECT 72 CT

CASE / EACH  
 CASE / EACH  
 CASE / LB  
 CASE / LB  
 CASE / EACH

**EDIBLE FLOWERS**

EDIBLE FLOWERS, MIXED 8 OZ  
 EDIBLE FLOWERS, NASTURTIUM 8 OZ  
 EDIBLE FLOWERS, ORCHIDS 50 CT  
 EDIBLE FLOWERS, PANSIES 8 OZ

CASE  
 CASE  
 CASE  
 CASE

**EGGPLANT**

EGGPLANT 18 CT / 24 CT  
 EGGPLANT **LOCAL** 25LB  
 EGGPLANT, ITALIAN 11 LB  
 EGGPLANT, JAPANESE 24 LB  
 EGGPLANT, WHITE 11 LB

CASE / EACH  
 CASE / EACH  
 CASE / LB  
 CASE / LB  
 CASE / LB

**ENDIVE**

ENDIVE, BELGIAN 10 LB  
 ENDIVE, RED 3 KILO

CASE / LB  
 CASE / LB

**ESCAROLE**

ESCAROLE 12 CT

CASE / EACH

**FENNEL**

FENNEL 24 CT BULB  
 FENNEL, BABY BULB 24 CT

CASE / EACH  
 CASE / EACH

**FIDDLE HEADS**

FIDDLE HEADS 5 LB / 10 LB (SEASONAL)

CASE / LB

**GARLIC**

GARLIC, BLACK PEELED 1 LB  
 GARLIC, BLACK WHOLE 1 LB  
 GARLIC, ELEPHANT 10 LB  
 GARLIC, LOOSE 30 LB  
 GARLIC, PEELED *CALIFORNIA* 4/1 GALLON  
 GARLIC, PEELED *CHINESE* 4/1 GALLON  
 GARLIC, CHOPPED IN OIL 12/32 OZ JAR

EACH  
 EACH  
 EACH  
 CASE / LB  
 CASE / EACH  
 CASE  
 CASE / EACH

**GINGER ROOT**

GINGER ROOT 30 LB

CASE / LB

**GOURDS**

GOURDS **LOCAL** 15 LB

CASE / LB

**HERBS**

HERBS, BASIL  
 HERBS, BASIL 3 CT CELLO  
 HERBS, BASIL THAI  
 HERBS, BAY LEAVES

1/4LB or 1LB CRATE  
 CASE  
 1/4LB or 1LB  
 1/4LB or 1LB





HERBS, BAY LEAVES 3 CT CELLO  
 HERBS, CHERVIL  
 HERBS, CILANTRO 30 CT  
 HERBS, CILANTRO **LOCAL** 30 CT  
 HERBS, CILANTRO 3 CT CELLO  
 HERBS, CHIVES (IMPORTED) 1 KILO  
 HERBS, CHIVES 3 CT CELLO  
 HERBS, DILL 1/4 LB, 24 CT CRATE  
 HERBS, DILL **LOCAL** 24 CT  
 HERBS, DILL 3 CT CELLO  
 HERBS, MARJORAM  
 HERBS, MINT 12 CT  
 HERBS, MINT (ORGANIC) 3 CT CELLO  
 HERBS, LEMON VERBENA  
 HERBS, OREGANO 4 OZ / 1 LB  
 HERBS, OREGANO 3 CT CELLO  
 HERBS, PARSLEY CURLEY 60 CT  
 HERBS, PARSLEY FLAT LEAF 60 CT  
 HERBS, ROSEMARY 4 OZ / 1 LB  
 HERBS, ROSEMARY 3 CT CELLO  
 HERBS, SAGE 4 OZ / 1 LB  
 HERBS, SAGE 3 CT CELLO  
 HERBS, SORREL 4 OZ / 1 LB  
 HERBS, SUMMER SAVORY 4 OZ  
 HERBS, WINTER SAVORY 4 OZ  
 HERBS, TARRAGON 4 OZ  
 HERBS, TARRAGON 3 CT CELLO  
 HERBS, THYME 4 OZ / 1 LB  
 HERBS, THYME 3 CT CELLO  
 HERBS, THYME LEMON 4 OZ / 1 LB

#### **HORSERADISH**

HORSERADISH, FRESH 5 LB

#### **KALE**

KALE, FLOWERING 24 CT  
 KALE, GREEN 12 CT  
 KALE, GREEN **LOCAL** 22 LB

#### **LEEEKS**

LEEEKS 12 CT  
 LEEKS **LOCAL** 12 CT

#### **LETTUCE**

LETTUCE, ARTISAN 12/4 CT  
 LETTUCE, ARTISAN BULK 8 LB  
 LETTUCE, ARTISAN BABY ROMAINE 24 CT  
 LETTUCE, BABY ARUGULA 3 LB  
 LETTUCE, BABY BIBB 1/2 LB BAG  
 LETTUCE, BABY ICEBURG 40 CT  
 LETTUCE, BABY RED OAK 2 LB  
 LETTUCE, BABY RED ROMAINE 1/2 LB BAG  
 LETTUCE, BOSTON 24 CT  
 LETTUCE, BOSTON **LOCAL** 24 CT  
 LETTUCE, CELLO 24 CT  
 LETTUCE, FRISEE 12 CT  
 LETTUCE, GREEN LEAF 24 CT  
 LETTUCE, GREEN LEAF **LOCAL** 24 CT  
 LETTUCE, GREEN LEAF CROWNS 10 LB  
 LETTUCE, GREEN OAK 1/2 LB BAG  
 LETTUCE, HYDROPONIC 12 CT  
 LETTUCE, ICEBERG 24 CT  
 LETTUCE, ICEBERG SHREDDED 4/5 LB BAG  
 LETTUCE, LOLLA ROSSA 2LB BAG *SPECIAL ORDER ITEM*  
 LETTUCE, MACHE *SPECIAL ORDER ITEM*  
 LETTUCE, MIZUNA *SPECIAL ORDER ITEM*  
 LETTUCE, RADICCIO 9 CT  
 LETTUCE, RED LEAF 24 CT  
 LETTUCE, RED LEAF **LOCAL** 24 CT  
 LETTUCE, RED OAK 1/2 LB BAG *SPECIAL ORDER ITEM*  
 LETTUCE, ROMAINE 24 CT  
 LETTUCE, ROMAINE CHOPPED 4/5 LB BAGS  
 LETTUCE, ROMAINE CUT 4/5 LB BAGS  
 LETTUCE, ROMAINE CROWNS 10 LB

CASE  
 1/4LB  
 CASE / BUNCH  
 CASE / BUNCH  
 CASE  
 CASE / BUNCH  
 CASE  
 CASE / BUNCH  
 CASE  
 1/4LB  
 CASE / BUNCH  
 CASE  
 CASE / BUNCH  
 EACH  
 CASE  
 CASE / BUNCH  
 CASE / BUNCH  
 EACH  
 CASE  
 EACH  
 CASE  
 EACH  
 EACH  
 EACH  
 EACH  
 CASE  
 EACH  
 CASE  
 EACH

CASE / LB

CASE / EACH  
 CASE / EACH  
 CASE / BUNCH

CASE / BUNCH  
 CASE / BUNCH

CASE / EACH  
 CASE  
 CASE  
 CASE  
 CASE  
 CASE  
 CASE  
 CASE / EACH  
 CASE / EACH  
 CASE / EACH  
 CASE / EACH  
 CASE / EACH  
 CASE / EACH  
 CASE / EACH  
 CASE / EACH  
 CASE / EACH  
 CASE / EACH  
 CASE  
 CASE  
 CASE / EACH  
 CASE / EACH  
 CASE / EACH  
 CASE  
 CASE / EACH  
 CASE  
 CASE





# LOCAL PRODUCE

## Little Leaf Farms

Little Leaf Farms has built the most modern, technologically-advanced greenhouse in the world. Our three-acre greenhouse facility in Devens, Massachusetts is centrally located to bring the freshest and best tasting baby lettuce to New England.

**BABY CRISPY GREEN LEAF  
RED & GREEN LEAF  
SPRING MIX  
SPRING MIX (FOODSERVICE)**



**Locally Grown  
in Devens, MA**



the local lettuce locals love.



## Olivia's Organics

Enjoy delicious produce with Olivia's Organics. Offering a pleasing and convenient variety of fresh organic products including tender leaf salads, and cooking greens - it's how we add freshness to your every meal!

**TENDER LEAF SALADS  
BABY GREENS  
POWER GREENS**



**Locally Packaged  
in Chelsea, MA**



Behind the Cape's Best Restaurants



Since 1925

**FRESH. LOCAL. DELIVERED DAILY.**

www.ringbroswholesale.com | 800-649-9827 | 485 Route 134 | South Dennis, MA 02660



LETTUCE, ROMAINE HEARTS 12 CT PKG	CASE / EACH
LETTUCE, SWEET GEM 24 CT	CASE
LETTUCE, TANGO 2 LB BAG	CASE
LETTUCE, TREVISO 12CT	CASE / EACH

#### LETTUCE MIX / VEGETABLE MIX

LETTUCE MIX, BABY GREEN LEAF <b>LOCAL (LITTLE LEAF)</b> 8/4 OZ	CASE / EACH
LETTUCE MIX, GREEN & RED LEAF MIX <b>LOCAL (LITTLE LEAF)</b> 8/4 OZ	CASE / EACH
LETTUCE MIX, SPRING MIX <b>LOCAL (LITTLE LEAF)</b> 8 / 4 OZ	CASE / EACH
LETTUCE MIX, SPRING MIX <b>LOCAL (LITTLE LEAF)</b> 3 LB	CASE / EACH
LETTUCE MIX, BABY ARUGULA (OLIVIAS ORGANICS) 8/5 OZ	CASE / EACH
LETTUCE MIX, BABY KALE (OLIVIAS ORGANICS) 8/5 OZ	CASE / EACH
LETTUCE MIX, BABY SPINACH (OLIVIAS ORGANICS) 8/5 OZ	CASE / EACH
LETTUCE MIX, SPRING MIX (OLIVIAS ORGANICS) 8/5 OZ	CASE / EACH
LETTUCE MIX, POWER GREENS (OLIVIAS ORGANICS) 8/5 OZ	CASE / EACH
LETTUCE MIX, ARCADIAN PETITE GREENS 4/3 LB	CASE / EACH
LETTUCE MIX, 4/5 LB BAG	CASE / EACH
LETTUCE MIX, MESCLUN 3 LB BAG	CASE
LETTUCE MIX, MESCLUN (WITHOUT RADICCIO / FRISEE) 3 LB BAG	CASE
LETTUCE MIX, MESCLUN (ORGANIC)	CASE
LETTUCE MIX, PARKWAY 4/5 LB	CASE
LETTUCE MIX, ROMAINE & ICEBURG 4/5 LB	CASE

#### MICRO GREENS / PETITE GREENS

MICRO GREENS, ARUGULA 8 OZ	EACH
MICRO GREENS, BASIL 8 OZ	EACH
MICRO GREENS, BULLS BLOOD 8 OZ	EACH
MICRO GREENS, CELERY 8 OZ	EACH
MICRO GREENS, CILANTRO <b>LOCAL</b> 8 OZ	EACH
MICRO GREENS, RAINBOW / CHEF'S BLEND <b>LOCAL</b> 8 OZ	EACH
MICRO GREENS, RED AMARANTH 8 OZ	EACH
MICRO GREENS, RED MUSTARD 8 OZ	EACH
MICRO GREENS, SAKURA MIX 18 CT	EACH
MICRO GREENS, SHISO LEAVES 8 OZ	EACH
PETITE GREENS, CILANTRO SPROUT 8 OZ	EACH
PETITE GREENS, POPCORN SHOOT 8 OZ <b>SPECIAL ORDER</b>	EACH
PETITE GREENS, PEA SHOOTS <b>LOCAL</b> 1 LB	EACH
PETITE GREENS, PEA TENDRILS 8 OZ	EACH
PETITE GREENS, SHISO LEAVES 8 OZ	EACH

#### MUSHROOMS

MUSHROOMS, BUTTON / MEDIUM / LARGE / SLICED 10 LB	CASE / LB
MUSHROOMS, 8 OZ CELLO PKG	CASE / EACH
MUSHROOMS, 12/8 OZ SLICED CELLO PKG	CASE / EACH
MUSHROOMS, BABY BELLA 10 OZ	CASE
MUSHROOMS, CHANTERELLE 3 LB / 5 LB <b>SPECIAL ORDER</b>	CASE / LB
MUSHROOMS, CRIMINI 5 LB	CASE / LB
MUSHROOMS, ENOKI 12CT PKG	CASE / EACH
MUSHROOMS, HEDGEHOG <b>SPECIAL ORDER</b>	CASE / LB
MUSHROOMS, HON SIMEJI (BEECH) PKG	CASE / EACH
MUSHROOMS, KING OYSTER 3 LB	CASE / LB
MUSHROOMS, MAITAKE 24/3 OZ / 3 LB	CASE
MUSHROOMS, MOREL 6 LB <b>SPECIAL ORDER</b>	CASE / LB
MUSHROOMS, OYSTER 3 LB	CASE / LB
MUSHROOMS, PORCINI DRIED 1 LB	CASE / LB
MUSHROOMS, PORTABELLA 5 LB	CASE / LB
MUSHROOMS, PORTABELLA CAPS 5 LB	CASE
MUSHROOMS, SHITAKE 3 LB	CASE / LB
MUSHROOMS, SILVER DOLLAR 10 LB	CASE / LB

#### MUSTARD GREENS

MUSTARD GREENS 12 CT	CASE / BUNCH
----------------------	--------------

#### OKRA

OKRA 20 LB	CASE / LB
------------	-----------

#### ONIONS

ONIONS, 2 LB / 24 CT BAG	CASE / EACH
ONIONS, BOILER 25 LB	CASE / LB
ONIONS, CIPOLLINI 10 LB BAG	CASE / LB
ONIONS, CIPOLLINI (PEELED) JAR	EACH
ONIONS, COMMON 50 LB	CASE / LB
ONIONS, COLOSSAL 50 LB	CASE / LB
ONIONS, DICED BAG / DICED RED BAG 5 LB	EACH
ONIONS, GREEN (ICELESS) 48 CT BUNCH	CASE / EACH
ONIONS, PEARL PKG	CASE / EACH







POTATOES, YUKON GOLD (A) / (B) / (C) / (CHEF) 50 LB

CASE / LB

### RADISHES

RADISHES 24 CT BUNCH

CASE / EACH

RADISHES, CELLO 1 LB PKG

CASE / EACH

RADISHES, DAIKON 40 LB

CASE / LB

RADISHES, BREAKFAST BUNCHED 12CT

CASE / EACH

RADISHES, WATERMELON 25 LB

CASE / LB

### RAMPS

RAMPS **LOCAL** 5 LB **SEASONAL**

CASE / LB

### ROOT VEGETABLES, OTHER

ROOT VEGETABLES, JICAMA 20 LB

CASE / LB

ROOT VEGETABLES, LOTUS ROOT

CASE / LB

ROOT VEGETABLES, TARO ROOT 40 LB

CASE / LB

ROOT VEGETABLES, YUCCA 40 LB

CASE / LB

### SALSIFY

SALSIFY 10 LB

CASE / LB

### SCALLIONS

SCALLIONS (ICELESS) 48 CT BUNCH

CASE / EACH

### SHALLOTS

SHALLOTS, LOOSE 10 LB

CASE / LB

SHALLOTS, PACKAGED

CASE / EACH

SHALLOTS, PEELED 4/5 LB

CASE / EACH

### SPINACH

SPINACH, BABY 4 LB

CASE

SPINACH, BUNCHED 24 CT

CASE / LB

SPINACH, CALIFORNIA 4/2½ LB PKG

CASE / EACH

SPINACH, PACKAGED 8/8 OZ PKG

CASE / EACH

### SPROUTS

SPROUTS, ALFALFA 12/4 OZ PKG / BULK 5 LB

CASE / EACH

SPROUTS, BEAN 10/14 OZ PKG

CASE / EACH

SPROUTS, BULK BEAN 10 LB

EACH

SPROUTS, BROCCOLI **SPECIAL ORDER**

CASE / EACH

SPROUTS, BRUSSEL 25 LB

CASE / LB

SPROUTS, BRUSSEL BABY

CASE / LB

SPROUTS, DAIKON **SPECIAL ORDER**

CASE / EACH

SPROUTS, RADISH 12/4 OZ / 2 LB PKG **SPECIAL ORDER**

CASE / EACH

### SQUASH

SQUASH, ACORN 40 LB

CASE / LB

SQUASH, ACORN **LOCAL** 40 LB

CASE / LB

SQUASH, ACORN GOLDEN **LOCAL** 40 LB

CASE / LB

SQUASH, ACORN WHITE **LOCAL** 40 LB

CASE / LB

SQUASH, BABY WITH BLOSSOMS (**LOCAL**)

LB

SQUASH, BABY PATTY PAN 5LB

CASE / LB

SQUASH, BABY SUMMER 5LB

CASE / LB

SQUASH, BABY SUNBURST 5LB

CASE / LB

SQUASH, BABY ZUCCHINI 5LB

CASE / LB

SQUASH, BUTTERCUP 40 LB

CASE / LB

SQUASH, BUTTERNUT 40 LB

CASE / LB

SQUASH, BUTTERNUT **LOCAL** 45 LB

CASE / LB

SQUASH, BUTTERNUT PEELED 10 LB

EASH

SQUASH, BUTTERNUT **LOCAL** PEELED 10 LB

EACH

SQUASH, CARNIVAL **LOCAL** 20 LB / 40 LB

CASE / LB

SQUASH, CHYOTE

CASE / LB

SQUASH, DELICATA 20 LB

CASE / LB

SQUASH, DELICATA **LOCAL** 40 LB

CASE / LB

SQUASH, HUBBARD BABY BLUE 40 LB

CASE / LB

SQUASH, HUBBARD **LOCAL** 40 LB

CASE / LB

SQUASH, MINI PUMPKINS **LOCAL** 14 LB

CASE / LB

SQUASH, PUMPKINS **LOCAL** 700 LB

BIN / LB

SQUASH, RED CURRY 40 LB

CASE / LB

SQUASH, SPAGHETTI 40 LB

CASE / LB

SQUASH, SPAGHETTI **LOCAL** 40 LB

CASE / LB

SQUASH, SUGAR PUMPKINS **LOCAL** 40 LB / 1000 LB

CASE / LB

SQUASH, SUMMER 20 LB

CASE / LB

SQUASH, SUMMER **LOCAL** 20 LB

CASE / LB

SQUASH, SWEET DUMPLING **LOCAL** 20 LB

CASE / LB

SQUASH, TURKISH TURBAN **LOCAL** 35 LB

CASE / LB

SQUASH, ZUCCHINI 20 LB

CASE / LB

SQUASH, ZUCCHINI **LOCAL** 20 LB

CASE / LB



**SWISS CHARD**

SWISS CHARD, BRITE LITES 12 CT  
SWISS CHARD, GREEN 12 CT  
SWISS CHARD, GREEN **LOCAL** 22 LB  
SWISS CHARD, RED 12 CT  
SWISS CHARD, RED **LOCAL** 22 LB

**TOFU**

TOFU, FIRM 12 / 1 LB  
TOFU, EXTRA FIRM 12 / 1 LB

## TOMATOES

TOMATOES, MEDIUM 6x7 / LARGE 6x6 / X-LARGE 5x6 / 25 LB	CASE / LB
TOMATOES, BEEF STEAK	CASE / LB
TOMATOES, CAMPARI	CASE / EACH
TOMATOES, CLUSTER LOCAL (BACKYARD FARMS) 11 LB	CASE / LB
TOMATOES, DICED 5 LB	EACH
TOMATOES, PEARLS "COCKTAIL" LOCAL (BACKYARD FARMS) 7.5 LB	CASE / LB
TOMATOES, WHOPPER (X-LRG) LOCAL (BACKYARD FARMS) 15 LB	CASE / LB
TOMATOES, CHERRY 12 CT PKG	CASE / EACH
TOMATOES, CHERRY LOCAL 12/1 PINT	CASE / LB
TOMATOES, GRAPE 12/1 PINT	CASE / EACH
TOMATOES, GRAPE YELLOW 12/1 PINT	CASE / EACH
TOMATOES, GREEN 10 LB	CASE / LB
TOMATOES, HEIRLOOM / HEIRLOOM MIXED LOCAL 10 LB	CASE / LB
TOMATOES, HEIRLOOM MIXED CHERRY 12 CT	CASE / EACH
TOMATOES, HOT HOUSE 15 LB	CASE / LB
TOMATOES, NATIVE LOCAL 20 LB	CASE / LB
TOMATOES, PEAR 12 CT PKG	CASE / EACH
TOMATOES, PEAR YELLOW 12 CT PKG	CASE / EACH
TOMATOES, ROMA PLUM 25 LB	CASE / LB
TOMATOES, ROMA PLUM LOCAL 25 LB	CASE / LB
TOMATOES, SWEET 100's 12 / 8OZ PKG	CASE / EACH
TOMATOES, TOMATILLO 10 LB	CASE / LB
TOMATOES, YELLOW 10 LB / 25 LB	CASE / LB
TOMATOES, SUN DRIED (HALVED) 5 LB BAG	EACH
TOMATOES, SUN DRIED (JULIENNE CUT) 5 LB BAG	EACH
TOMATOES, VINE RIPENED / VINE RIPENED UGLY 25 LB	CASE / LB
TOMATOES, VINE RIPENED 4x5	CASE

## TURNIPS

TURNIPS, WHITE **LOCAL** 40 LB  
TURNIPS, PEELED  
TURNIPS, PURPLE TOP 25 LB  
TURNIPS, PURPLE TOP **LOCAL** 25 LB  
TURNIPS, RUTABEGA 50 LB

## UPLAND CRESS

---

---

UPLAND CRESS

## WATERCRESS

WATERCRESS 12 CT BU  
WATERCRESS, CELLO 6 CT

**YAMS**

YAMS 40 LB  
YAMS, PEELED

CASE / BUNCH  
CASE / BUNCH  
CASE / BUNCH  
CASE / BUNCH  
CASE / BUNCH



CASE / EACH  
CASE / EACH

CASE / LB  
CASE / LB  
CASE / EACH  
CASE / LB  
EACH



B CASE / LB  
CASE / LB  
CASE / EACH  
CASE / LB  
CASE / EACH  
CASE / EACH  
CASE / LB  
CASE / LB  
CASE / EACH  
CASE / LB  
CASE / LB  
CASE / EACH  
CASE / EACH  
CASE / LB  
CASE / LB  
CASE / EACH  
CASE / LB  
CASE / LB  
EACH



CASE / LB  
LB  
CASE / LB  
CASE / LB  
CASE / LB



## CASE

CASE / EACH  
CASE / EACHCASE / LB  
LB

# FRESH CUT

Value added produce such as pre-chopped and prepared vegetables can make meal preparation in the kitchen more convenient, and provide labor saving opportunities.

PEELED JUMBO ASPARAGUS **SPECIAL ORDER**

BROCCOLI FLORETTES 4/3LB

PEELED BUTTERNUT SQUASH 10 LB

BABY PEELED CARROTS WITH TOPS 5 LB

BABY RAINBOW PEELED CARROTS 5 LB

CAULIFLOWER FLORETTES 4/3 LB

SHREDDED ICEBERG LETTUCE 4/5 LB BAG

WHOLE PEELED POTATOES 20 LB TUB

WHOLE PEELED YUKON GOLD POTATOES 20 LB TUB

DICED 1/2" POTATOES 30 LB TUB

DICED 3/4" POTATOES 30 LB TUB

CUT ROMAINE LETTUCE 4/5 LB BAGS

PARKWAY LETTUCE MIX 4/5 LB

ROMAINE & ICEBURG LETTUCE MIX 4/5 LB



Behind the Cape's Best Restaurants



Since 1925

## FRESH. LOCAL. DELIVERED DAILY.

[www.ringbroswholesale.com](http://www.ringbroswholesale.com) | 800-649-9827 | 485 Route 134 | South Dennis, MA 02660



# ORGANIC VEGETABLES

## ORGANIC VEGETABLES - SPECIAL ORDER

ASPARAGUS 11 LB	CASE / LB
AVOCADOES	EACH
BEANS, GREEN 25 LB	CASE / LB
BEETS, GOLD BUNCH 24 CT	CASE / BUNCH
BEETS, RED BUNCH 24 CT	CASE / BUNCH
BOK CHOY 35 LB	CASE / LB
BROCCOLI, CROWNS 20 LB	CASE / LB
BROCCOLINI 18 CT	CASE / BUNCH
BRUSSEL SPROUTS 10 LB	CASE / LB
CABBAGE, GREEN 40 LB	CASE / LB
CARROTS, CELLO 24/2 LB	CASE / PKG
CARROTS, JUMBO CUT 25 LB	CASE / LB
CARROTS, MINI 24/11 LB	CASE / PKG
CAULIFLOWER 12 CT	CASE / HEAD
CUCUMBERS 36 CT	CASE / EACH
DANDELION 12 CT	CASE / BUNCH
ENDIVE, BELGIAN 11 LB	CASE / LB
HERBS (ASSORTED VAR) 3 CT CELLO	CASE
KALE, GREEN 24 CT	CASE / BUNCH
LETTUCE, GREEN LEAF 24 CT	CASE / HEAD
LETTUCE, CELLO ICEBRG 12CT	CASE / HEAD
LETTUCE, RADICCHIO 12-15CT	CASE / HEAD
LETTUCE, RED LEAF 24 CT	CASE / HEAD
LETTUCE, ROMAINE 24 CT	CASE / HEAD
LETTUCE, ROMAINE HRT 12/3C	CASE / PKG
LETTUCE, SPRING MIX 3 LB	CASE
MUSHROOMS, CRIMINI 5 LB	CASE / LB
MUSHROOMS, PORTABEL 5 LB	CASE
MUSHROOMS, SHIITAKE 3 LB	CASE
MUSHROOMS, WHT MED 10LB	CASE / LB
MUSHROOMS, WHT LG 10 LB	CASE / LB
ONIONS, JUMBO SPANISH 40 LB	CASE / LB
PARSLEY, CURLEY 30 CT	CASE / BUNCH
PARSLEY, FLAT LEAF 30 CT	CASE / BUNCH
PEAS, SNOW 10 LB	CASE / LB
PEAS, SUGAR SNAP 10 LB	CASE / LB
PEPPERS, GREEN LG / XLG	CASE / LB
PEPPERS, RED 11 LB	CASE / LB
PEPPERS, YELLOW 11 LB	CASE / LB
POTATOES, 70CT RUSSET 50 LB	CASE / LB
POTATOES, 90CT RUSSET 50 LB	CASE / LB
SCALLIONS 48 CT	CASE / BUNCH
SHALLOTS 10 LB	CASE / LB
SPINACH, BABY 4 LB	CASE
SQUASH, SUMMER 20 LB	CASE / LB
SQUASH, ZUCCHINI 24 LB	CASE / LB
SPROUTS, ALFALFA 12/4 OZ	CASE / PKG
SPROUTS, BEAN 6/4 OZ	CASE / PKG
SWISS CHARD, RAINBOW 24 CT	CASE / BUNCH
TOMATOES, 2 LAYER 20 LB	CASE / LB
TOMATOES, GRAPE 12/16 OZ	CASE / PKG
TOMATOES, CLUSTER 11 LB	CASE / LB
TOMATOES, ROMA PLUM 25 LB	CASE / LB
YAMS, GARNET 40 LB	CASE / LB

**PLEASE ALLOW 48 HOURS  
LEAD TIME FOR ALL ORGANIC  
FRUIT & VEGETABLES**



*There are many reasons to buy organic. First, it is better for the environment. No pesticides means healthier soil, water, and wildlife. Buying organic supports small farmers. Organic farmers can earn a fairer price for organic produce compared to factory farming. Organic farming is good for biodiversity.*

*Organic farmers are growing a wide variety of non-genetically modified (non-GMO) fruits and vegetables.*

# ORGANIC FRUIT

## ORGANIC FRUIT - SPECIAL ORDER

APPLES, GALA	CASE / EACH
APPLES, GRANNY SMITH	CASE / EACH
BANANAS	CASE / LB
BLUEBERRIES 6 OZ	CASE / PKG
GRAPES, GREEN	CASE / LB
GRAPES, RED	CASE / LB
KIWI FRUIT 33 CT	CASE / EACH
LEMONS 95 CT	CASE / EACH
LIMES 1LB BAG	CASE / BAG
MANGOES	CASE / EACH
ORANGES, NAVEL 72 CT	CASE / EACH
PEARS, ANJOU/BARTLT 80 CT	CASE / EACH
PINEAPPLES 5 CT	CASE / EACH
RASPBERRIES 1/2 PINT	CASE / PKG
STRAWBERRIES 1 LB	CASE / PKG



**PLEASE ALLOW 48 HOURS LEAD TIME FOR ALL ORGANIC FRUIT & VEGETABLES**

Conventional farmers	Organic farmers
Apply chemical fertilizers to promote plant growth.	Apply natural fertilizers, such as manure or compost, to feed soil and plants.
Spray insecticides to reduce pests and disease.	Use beneficial insects and birds, mating disruption or traps to reduce pests and disease.
Use chemical herbicides to manage weeds.	Rotate crops, till, hand weed or mulch to manage weeds.
Give animals antibiotics, growth hormones and medications to prevent disease and spur growth.	Give animals organic feed and allow them access to the outdoors. Use preventive measures — such as rotational grazing, a balanced diet and clean housing — to help minimize disease.

Behind the Cape's Best Restaurants



Since 1925

**FRESH. LOCAL. DELIVERED DAILY.**

www.ringbroswolesale.com | 800-649-9827 | 485 Route 134 | South Dennis, MA 02660

# ORGANIC VALLEY

DAIRY



Regional, organic production builds the local economy and allows rural communities to protect the environment in which their children are raised. Our co-operative mission is to keep organic family farmers on the farm, taking care of the land and resources in your region.



Although Ring Bros. Wholesale does not stock Organic Valley product we work close with Organic Valley, and have built a relationship with distributors so that we are able to source any Organic Valley product available, for your establishment. Ring Bros. Wholesale stands behind the mission Organic Valley has set forth to deliver, and we believe the products are the best in the category.

Please contact us with specific Organic Valley needs and Ring Bros. Wholesale can put together a program which works for you.

Behind the Cape's Best Restaurants



Since 1925

## FRESH. LOCAL. DELIVERED DAILY.

[www.ringbroswholesale.com](http://www.ringbroswholesale.com) | 800-649-9827 | 485 Route 134 | South Dennis, MA 02660



*SPECIAL ORDER*

# CHOBANI

DAIRY



Chobani Greek Yogurt is a high-protein, blank canvas for everything delicious. Crafted from locally sourced milk with live and active cultures, it's creamy and nutrient dense.

## FOODSERVICE

**GREEK 0% PLAIN 6/32oz**  
**GREEK 5% PLAIN 6/32oz**  
**GREEK 0% VANILLA 6/32oz**

## RETAIL / INDIVIDUAL

**GREEK 0% BLACK CHERRY 12/5.3oz**  
**GREEK 0% BLACKBERRY 12/5.3oz**  
**GREEK 0% BLUEBERRY 12/5.3oz**  
**GREEK 0% PEACH 12/5.3oz**  
**GREEK 0% PLAIN 12/5.3oz**  
**GREEK 0% RASPBERRY 12/5.3oz**  
**GREEK 0% STRAWBERRY 12/5.3oz**  
**GREEK 0% VANILLA 12/5.3oz**

Chobani Fruit on the Bottom Greek Yogurt is crafted with real fruit and fresh, local milk, made with only natural ingredients and no preservatives. Perfect for everyday, anytime eating.



Behind the Cape's Best Restaurants



Since 1925

**FRESH. LOCAL. DELIVERED DAILY.**

www.ringbroswholesale.com | 800-649-9827 | 485 Route 134 | South Dennis, MA 02660



MILK, WHOLE 20 QUART DISPENSER	<i>SPECIAL ORDER</i>	EACH
MILK, WHOLE GALLON		EACH
MILK, WHOLE HALF GALLON		EACH
MILK, WHOLE HALF PINT		EACH
<b><u>MILK SUBSTITUTES (REFRIGERATED)</u></b>		
MILK SUBSTITUTES, OATMILK ORIGINAL (OATLY) 6/64 OZ		CASE
MILK SUBSTITUTES, ALMOND ORIGINAL UNSWT (BLUE DIAMOND)		CASE
<b><u>ORGANIC BUTTER</u></b>		
ORGANIC BUTTER, QUARTERS SALTED (ORGANIC VALLEY) 1 LB		EACH
<b><u>ORGANIC CREAM</u></b>		
ORGANIC CREAM, HALF & HALF (ORGANIC VALLEY) 32 OZ		EACH
<b><u>ORGANIC EGGS</u></b>		
ORGANIC EGGS, LARGE BROWN BOXED (ORGANIC VALLEY) DOZ		EACH
<b><u>SOUR CREAM</u></b>		
SOUR CREAM, 1 LB / 6/5 LB		EACH
SOUR CREAM, 1 OZ / 100 CT		CASE
<b><u>YOGURT (FOOD SERVICE)</u></b>		
YOGURT, GREEK 0% PLAIN (CHOBANI) 6/32 OZ		CASE / EACH
YOGURT, GREEK 5% PLAIN (CHOBANI) 6/32 OZ		CASE / EACH
YOGURT, GREEK 0% VANILLA (CHOBANI) 6/32 OZ		CASE / EACH
YOGURT, WM STRAWBERRY <i>LOCAL (STONYFIELD)</i> 6/32 OZ		CASE / EACH
<b><u>YOGURT (INDIVIDUAL)</u></b>		
YOGURT, GREEK 0% ASSORTED FLAVORS (CHOBANI) 12/5.3 OZ		CASE
YOGURT, GREEK 0% BLACK CHERRY (CHOBANI) 12/5.3 OZ		CASE
YOGURT, GREEK 0% BLACKBERRY (CHOBANI) 12/5.3 OZ		CASE
YOGURT, GREEK 0% BLUEBERRY (CHOBANI) 12/5.3 OZ		CASE
YOGURT, GREEK 0% PEACH (CHOBANI) 12/5.3 OZ		CASE
YOGURT, GREEK 0% PLAIN (CHOBANI) 12/5.3 OZ		CASE
YOGURT, GREEK 0% RASPBERRY (CHOBANI) 12/5.3 OZ		CASE
YOGURT, GREEK 0% STRAWBERRY (CHOBANI) 12/5.3 OZ		CASE
YOGURT, GREEK 0% VANILLA (CHOBANI) 12/5.3 OZ		CASE



# CABOT CREAMERY



We manage four plants in three states, employing over 1,000 people, who make the best dairy products on the planet. Award-winning cheeses made with love and pride in Cabot and Middlebury, Vermont and Chateaugay, NY. The best premium butter churned with care in West Springfield, Massachusetts.



CHEESE



## Locally Made in Vermont



Behind the Cape's Best Restaurants



Since 1925

## FRESH. LOCAL. DELIVERED DAILY.

[www.ringbroswholesale.com](http://www.ringbroswholesale.com) | 800-649-9827 | 485 Route 134 | South Dennis, MA 02660



CHEESE, AMERICAN WHITE 120 CT 4/5 LB	CASE / EACH
CHEESE, ASIAGO BLACK WAXED	LB
CHEESE, ASIAGO SHREDDED 5 LB BAG	EACH
CHEESE, BLUE CRUMBLD 4/5 LB	CASE / EACH
CHEESE, BLUE GREAT HILL	LB
CHEESE, BURRATA (2X4OZ) 6/8 OZ TUBS	CASE / EACH
CHEESE, GORGONZOLA 8 LB	LB
CHEESE, CRUMBLD GORGONZOLA	LB
CHEESE, BRIE 1 KILO	EACH
CHEESE, CHEDDAR SHARP WHITE, PRINT 10 LB	LB
CHEESE, CHEDDAR WHITE MILD, PRINT 10 LB	LB
CHEESE, CHEDDAR WHITE SLICED	CASE / EACH
CHEESE, CHEDDAR YELLOW SLICED	CASE / EACH
CHEESE, CHEDDAR WHITE SHREDDED 5 LB BAG	EACH
CHEESE, CHEDDAR YELLOW SHREDDED 5 LB BAG	EACH
CHEESE, FETA 2/8 LB TUB	EACH
CHEESE, FETA CUMBLED 2.5 LB	EACH
CHEESE, FONTINA 1/4 WHEEL 6 LB	LB
CHEESE, GOAT 1 KILO	LB
CHEESE, GOAT CRUMBLD 2.5 LB	EACH
CHEESE, GOUDA SMOKED	LB
CHEESE, GRADA PADANO 1/4 WHEEL	LB
CHEESE, GRUYERE KING CENTER CUT (IMPORTED) 6 LB LOAF	LB
CHEESE, HAVARTI WITH DILL 7 LB	LB
CHEESE, MANCHEGO 1/2 WHEEL (3LB AVERAGE)	LB
CHEESE, MARSCAPONE 4/5 LB	EACH
CHEESE, MONTEREY JACK SHREDDED BAG	EACH
CHEESE, MONTEREY JACK/CHEDDAR SHREDDED 5 LB BAG	EACH
CHEESE, MONTEREY JACK PRINT 10 LB	LB
CHEESE, MONTEREY JACK/JALEPENO (PEPPERJACK) SLICED 10 LB	LB
<i>SLICED PEPPERJACK IS A SPECIAL ORDER ITEM</i>	
CHEESE, MONTEREY JACK/JALEPENO (PEPPERJACK) PRINT 10 LB	LB
CHEESE, MOZZARELLA	LB
CHEESE, MOZZARELLA, SLICED LOG 12/16 OZ	EACH
CHEESE, MOZZARELLA (4 OZ OVOLINI) 2/3 LB TUB	EACH
CHEESE, MOZZARELLA (1.5 OZ BOCC) 2/3 LB TUB	EACH
CHEESE, MOZZARELLA (.45 OZ CILIEG) 2/3 LB TUB	EACH
CHEESE, MOZZARELLA SHREDDED 5 LB BAG	EACH
CHEESE, PARMESAN REGGIANO 1/4 WHEEL (IMPORTED)	LB
CHEESE, PARMESAN GRATED 4/5 LB TUB	EACH
CHEESE, PARMESEAN SHAVED 5 LB BAG	EACH
CHEESE, PARMESAN SHREDDED BAG 2/5 LB BAG	EACH
CHEESE, PROVALONE SLICED	CASE / EACH
CHEESE, PROVALONE STICK	LB
CHEESE, QUESO FRESCO 1/4 WHEEL (NARRAGANSETT) 3/4 LB	EACH
CHEESE, RICOTTA 5 LB TUB	EACH
CHEESE, ROMANO (IMPORTED) 1/4 WHEEL	LB
CHEESE, ROMANO GRATED 5 LB TUB	EACH
CHEESE, ROMANO SHREDDED	LB
CHEESE, SPREAD GARLIC & HERB 5 LB TUB	EACH
CHEESE, SWISS, SANDWICH CUT	LB
CHEESE, SWISS SLICED	CASE / EACH

# CARLSON ORCHARD

Carlson Orchards is committed to making the highest quality orchard products available in the New England market. All of our products are delicious, and carry our recognizable brand-name of local excellence.

## APPLE CIDER

*Keep Refrigerated*

Gallon (seasonal)

Half Gallon

UPC: 8-56005-00313-9



**Locally Made in Harvard, MA**

# POM WONDERFUL



POM Wonderful 100% Pomegranate Juice. A little sweet, a little tart, and a whole lot of healthy. Powered by pomegranate antioxidants, it's authentic, delicious and 100% pure. There is no added sugar, colorants or cheap filler juices.

## 100% POMEGRANATE JUICE

*Keep Refrigerated*

6/16oz

UPC: 8-24150-40116-2

Behind the Cape's Best Restaurants



Since 1925

**FRESH. LOCAL. DELIVERED DAILY.**

www.ringbroswholesale.com | 800-649-9827 | 485 Route 134 | South Dennis, MA 02660



**BIONATURAE ORGANIC**

NECTAR, PEACH 25.4 OZ

CASE

NECTAR, PEAR 25.4 OZ

CASE

**CARLSON'S ORCHARDS**CIDER, APPLE 9/64 OZ **LOCAL**

CASE / EACH

**COLD BREW COFFEE SCIENCE**COLD BREW, LIBERATOR BLEND 5 GAL KEG **LOCAL**

EACH

**JUICE, OTHER REFRIGERATED**

JUICE, ORANGE (HOOD) 14 OZ

CASE

JUICE, ORANGE (HOOD) HALF GALLON

EACH

**NATALIE'S ORCHID ISLAND**

BAR MIX, MARGARITA 6/64 OZ

CASE / EACH

JUICE, NOI LEMONADE 9/64 OZ / 12/16 OZ

CASE / EACH

JUICE, NOI STRAWBERRY LEMONADE 9/64 OZ / 12/16 OZ

CASE / EACH

JUICE, NOI BLOOD ORANGE 6/16 OZ / 6/32 OZ

CASE / EACH

JUICE, NOI ORANGE 4/128OZ / 9/64OZ / 12/32OZ / 6/16OZ

CASE / EACH

JUICE, NOI GRAPEFRUIT 9/64OZ / 12/32OZ / 6/16OZ

CASE / EACH

JUICE, NOI 100% PURE LEMON JUICE LITER 12/1 L (FROZEN)

CASE / EACH

JUICE, NOI 100% PURE LIME JUICE LITER 12/1 L (FROZEN)

CASE / EACH

*OTHER 16 OZ VARIETIES AVAILABLE AS A SPECIAL ORDER***OCEAN SPRAY**

JUICE, CRANBERRY COCKTAIL (OCEAN SPRAY) 8/64 OZ

CASE / EACH

**POLAND SPRING**WATER, POLAND SPRING 1 GALLON **LOCAL**

EACH

WATER, POLAND SPRING DISTILLED 1 GALLON **LOCAL**

EACH

WATER, POLAND SPRING 2/2.5 GAL **LOCAL**

CASE

**POM WONDERFUL**

JUICE, POMEGRANATE 6/16OZ

CASE / EACH

**RAIN WATER**WATER, PURE MOUNTAIN (RAIN) 24 / 16 OZ *ALUMINUM BOTTLES*

CASE

**SAN PELLEGRINO**

WATER, SAN PELLEGRINO SPARKLING 12/750 ML

CASE



# NATALIE'S ORCHID ISLAND JUICE COMPANY

We guarantee that only the finest fruit is picked fresh from the trees and squeezed to capture the flavor of the juice at its peak. Our state of the art chilling and sanitation equipment solidifies the process of keeping our 100% Fresh Squeezed Juice at its most desirable level of freshness and provides you with the longest shelf life possible.



## JUICES ORANGE JUICE WITH PULP

*Gallon, Half Gallon, Quart, Pint*

## GRAPEFRUIT JUICE

*Gallon, Half Gallon, Quart, Pint*

## BLOOD ORANGE JUICE

*Quart*

## SEASONAL BEVERAGES

### LEMONADE

*Half Gallon, Pint*

### STRAWBERRY LEMONADE

*Half Gallon, Pint*

### MARGARITA MIXER

*Half Gallon*



### Special Order

16oz Orange Mango, Tangerine, Orange Pineapple, Blood Orange, Orange Beet, Carrot Ginger, Guava Lemonade, Mango Lemonade

Behind the Cape's Best Restaurants



Since 1925

# FRESH. LOCAL. DELIVERED DAILY.

www.ringbroswholesale.com | 800-649-9827 | 485 Route 134 | South Dennis, MA 02660

# NATALIE'S ORCHID ISLAND JUICE COMPANY



We squeeze 100% fresh limes and lemons, so you don't have to.

Rich in Vitamin C & phytonutrients.

No preservatives, no artificial ingredients, no added sugar, no GMOs

***FROZEN 100% PURE***  
**100% LEMON JUICE**  
**100% LIME JUICE**  
*Frozen Product—12/1 Liter*



## **Mango Lemonade**

*Special Order Only*

Fresh lemons, mangos, pure cane sugar & water are the secret to this tropical concoction, contains Vitamins C & E, which are known to support healthy bone growth & immune function.



## **Guava Lemonade**

*Special Order Only*

Fresh lemons, guava, pure cane sugar & water are the secret to this tropical showstopper. Rich in antioxidants, vitamin C, Potassium & Fiber, which are known to boost immune function & support heart health. No preservatives, no artificial ingredients, no additives & no GMOs.

Behind the Cape's Best Restaurants



Since 1925

**FRESH. LOCAL. DELIVERED DAILY.**

www.ringbroswholesale.com | 800-649-9827 | 485 Route 134 | South Dennis, MA 02660

BEVERAGES



# RAIN WATER



Plastic-free canned water bottles. The most sustainable thing to happen to bottled water, is aluminum. Single sourced pure mountain spring water bottled in aluminum for plastic-free oceans and bodies.

## PURE MOUNTAIN SPRING WATER

24 / 16oz

UPC: 8-60002-06930-2



### THE BOTTLE

- Sustainable
- 100% and infinitely recyclable aluminum
- Recycled at 4x the rate of plastic
- Great Look & Feel
- Unique aesthetic = Strong shelf presence
- Colder, faster

### THE WATER

- High Quality
- Unmodified pure mountain spring water just like mother nature intended
- Naturally occurring electrolytes for a light, clean, easy-to-drink flavor
- Sustainable
- Ultra-sustainable aquifer in one of the rainiest counties in the United States (Tiger, GA)
- Harvested with zero mechanical energy

Behind the Cape's Best Restaurants



Since 1925

# FRESH. LOCAL. DELIVERED DAILY.

www.ringbroswholesale.com | 800-649-9827 | 485 Route 134 | South Dennis, MA 02660

# COLD BREW COFFEE

Cold Brew Coffee Science and Ring Bros. Wholesale have partnered to provide customers the best possible cold brew product.

Our team of coffee professionals each have years of hands on experience hand crafting, selecting, distributing, and serving cafes, restaurants, markets, mom & pops, and foodservice establishments.



We both share the same objective... to serve the best quality products and make our customers happy, increasing your sales by featuring cold brewed coffee and smoothies. Both you and your customers will discover what they've been missing.

## **COLD BREW COFFEE SCIENCE LIBERATOR COLD BREWED COFFEE**

Our cold brewed coffee is a proprietary recipe with both high elevation Brazilian Estate and Organic Rain Forest Alliance Columbian coffees. Full bodied, smooth and creamy. Notes of milk chocolate, caramel and cane sugar.

**5 Gal Keg | YIELD IS 640 oz**



**Locally Brewed in Berkley, MA**

**Behind the Cape's Best Restaurants**



**Since 1925**

**FRESH. LOCAL. DELIVERED DAILY.**

**www.ringbroswholesale.com | 800-649-9827 | 485 Route 134 | South Dennis, MA 02660**

# ASIAN FOODS

Asian fusion cooking is the practice of combining foods and cooking styles from diverse sources to create new dishes and flavor combinations. This type of cooking has great potential to turn ordinary dining into a wow experience. With weekly deliveries from some of the top Asian distributors, we've selected products which will help your menu distinguish itself from others on Cape.

SPECIALTY

**AJI MIRIN (TSUBASA) 1/2 GALLON**  
**CHILI PASTE (SAMBAL OELEK) GAL**  
**CHILI PASTE GARLIC (HUY FONG) GAL**  
**KOREAN CHILI PASTE (GOCHUJANG) 1 KILO**  
**SRIRIACHA CHILI SAUCE (HUY FONG) 28 OZ**  
**SWEET CHILI SAUCE (MAE PLOY) 32 OZ**  
**COCONUT MILK, HIGH FAT 24/13.5 / #10**  
**GREEN, RED, YELLOW CURRY PASTE 35 OZ**  
**EGG ROLL WRAPPERS 1 LB**  
**FISH SAUCE (3 CRABS) 24 OZ**  
**HOISIN SAUCE 5 LB CAN**  
**MISO SOY PASTE (RED & WHITE) 35.4 OZ**  
**BEAN THREADED NOODLES (DRY)**  
**FRESH LO MEIN NOODLES 1 LB**  
**PAD THAI NOODLES 1LB**  
**SOMEN NOODLES 3 LB**  
**UDON NOODLES 12.8 OZ**  
**NORI 1/2 SHEETS 10/50 CT**  
**SESAME OIL, 100% PURE 56 OZ**  
**SOY SAUCE (KIKKOMAN) 64 OZ**  
**SOY SAUCE, LOW SODIUM 64 OZ**  
**SWEET SOY SAUCE (ABC) 20.9 OZ BOTTLE**  
**PANKO FLAKES 20 LB**  
**PICKLED GINGER (PINK) 10/2 LB TUB**  
**PICKLED GINGER (WHITE) 10/2 LB TUB**  
**RICE WINE VINEGAR 1 GALLON**  
**SPRING ROLL SKIN RICE PAPER 12 OZ**  
**SPRING ROLL SKIN, WHEAT 12 OZ**  
**TAMARI SOY SAUCE (KIKKOMAN) 64 OZ**  
**WAKAME SEAWEED SALAD 2 KILO TRAY**  
**WASABI POWDER 2.2 LB**  
**WATER CHESTNUTS**  
**WONTON SKINS 1 LB**



Behind the Cape's Best Restaurants



Since 1925

**FRESH. LOCAL. DELIVERED DAILY.**

[www.ringbroswholesale.com](http://www.ringbroswholesale.com) | 800-649-9827 | 485 Route 134 | South Dennis, MA 02660



**ANCHOVIES**

ANCHOVIES, WHITE TRAY 1 KILO	EACH
ANCHOVIES, FILLETS IN OLIVE OIL 28 OZ	EACH

**ASIAN FOODS**

ASIAN FOODS, AJI MIRIN (TSUBASA) 1/2 GALLON	EACH
ASIAN FOODS, CHILI PASTE (SAMBAL OELEK) GAL	EACH
ASIAN FOODS, CHILI PASTE KOREAN (GOCHUJANG) 1 KILO	EACH
ASIAN FOODS, CHILI SAUCE, HOT SRIRACHA (HUY FONG) 12/28 OZ	CASE / EACH
ASIAN FOODS, CHILI SAUCE, SWEET (MAE PLOY) 12/32 OZ	CASE / EACH
ASIAN FOODS, COCONUT MILK, HIGH FAT 24/13.5 OZ / #10	CASE / EACH
ASIAN FOODS, CURRY PASTE GREEN / RED / YELLOW 35 OZ	EACH
ASIAN FOODS, EGG ROLL WRAPPERS 1 LB	EACH
ASIAN FOODS, FISH SAUCE, (3 CRABS) 24 OZ	EACH
ASIAN FOODS, HOISIN SAUCE CAN 6/5 LB	CASE / EACH
ASIAN FOODS, OYSTER SAUCE 6/5 LB	CASE / EACH
ASIAN FOODS, MISO SOY PASTE RED / WHITE 35.4 OZ	EACH
ASIAN FOODS, NOODLES, BEAN THREADED (DRY)	EACH
ASIAN FOODS, NOODLES, LO MEIN, FRESH 1 LB	EACH
ASIAN FOODS, NOODLES, PAD THAI	EACH
ASIAN FOODS, NOODLES SOBA	EACH
ASIAN FOODS, NOODLES, SOMEN 3 LB	EACH
ASIAN FOODS, NOODLES, UDON 12.8 OZ	EACH
ASIAN FOODS, NORI 1/2 SHEETS 10/50 CT	CASE / EACH
ASIAN FOODS, SESAME OIL 100% PURE 56 OZ	EACH
ASIAN FOODS, PANKO FLAKES 20 LB	EACH
ASIAN FOODS, PICKLED GINGER (PINK) 10/2 LB	EACH
ASIAN FOODS, PICKLED GINGER (WHITE) 10/2 LB	EACH
ASIAN FOODS, RICE WINE VINEGAR 1 GALLON	EACH
ASIAN FOODS, SOY SAUCE (KIKKOMAN) 64 OZ	EACH
ASIAN FOODS, SOY SAUCE SWEET (ABC) 20.9 OZ BOTTLE	EACH
ASIAN FOODS, SOY SAUCE LOW SOD (KIKKOMAN) 64 OZ	EACH
ASIAN FOODS, SPRING ROLL SKIN RICE PAPER 40 / 14 OZ	EACH
ASIAN FOODS, SPRING ROLL SKIN, WHEAT 25 / 40CT 12 OZ	EACH
ASIAN FOODS, TAMARI SOY SAUCE (KIKKOMAN) 64 OZ	EACH
ASIAN FOODS, WAKAME SEAWEED SALAD 2 KILO TRAY	EACH
ASIAN FOODS, WASABI GREEN PEAS 22 LB	CASE
ASIAN FOODS, WASABI POWDER 2.2 LB	EACH
ASIAN FOODS, WATER CHESTNUTS, SLICED #10 CAN	EACH
ASIAN FOODS, WONTON SKINS 1 LB	EACH

**BAKING INGREDIENTS**

AGAVE NECTAR, BLUE ORGANIC 4/44 OZ	CASE / EACH
COCONUT, SHAVED UNSWEETENED 4/12 OZ	CASE / EACH
CONDENSED MILK, SWEETENED (EAGLE) 24/14 OZ	CASE
EVAPORATED MILK (CARNATION) 24/14 OZ	CASE
FLOUR, ALL PURPOSE (KING ARTHUR SPECIAL) 50 LB	EACH
HONEY 5 LB	EACH



MAPLE SYRUP, VERMONT GRADE A 64 OZ <b>LOCAL</b>	EACH
SUGAR, GRANULATED 50 LB	EACH
SUGAR, LIGHT BROWN 24/1 LB	CASE

**BASES / STOCKS**

STOCK, VEGETABLE (LIQUID) 12/32 OZ	CASE
STOCK, CHICKEN (LIQUID) 12/32 OZ	CASE
STOCK, BEEF (LIQUID) 12/32 OZ	CASE

**CONDIMENTS / SAUCES**

BBQ SAUCE <b>LOCAL (SWEET BABY RAYS)</b> 4/1 GAL	CASE / EACH
COCKTAIL SAUCE <b>LOCAL (KEN'S)</b> 4/1 GAL	CASE / EACH
KETCHUP, HUNTS 6/#10 CAN	CASE / EACH
MAYONNAISE 4/1 GAL	CASE / EACH
MAYONNAISE (HELLMANS) 4/1 GAL	CASE / EACH
MUSTARD, DELI 4/1 GAL	CASE / EACH
MUSTARD, DIJON 4/1 GAL	CASE / EACH
MUSTARD, YELLOW (FRENCH'S) 4/105 OZ	CASE / EACH
RELISH, SWEET 4/1 GAL	CASE / EACH
SALSA, MEDIUM 4/1 GAL	CASE / EACH
SAUERKRAUT 6/#10 CANS	CASE / EACH
WORCESTERSHIRE SAUCE 1 GAL	EACH

**CRACKERS / CROUTONS**

CRACKERS, OYSTER (WESTMINSTER) 150 / .5 OZ	CASE
CROUTONS, HERB SEASONED 1/2IN CUBE 4/2.5 LB	CASE

# CLAM FRY

Since 1938, Golden Dipt has been the #1 supplier of breadings, batters and bread crumbs. Our longstanding history of providing the freshest premium quality products assures that you'll serve nothing but the best.

## Clam Fry Mix 50lb Bag

Formulated for frying clams and other seafood, it is made from a blend of corn flour, cornmeal and wheat flour and is lightly seasoned to enhance the clam's natural flavor.



SPECIALTY

# MAPLE SYRUP

We purchase syrup from sugar makers throughout Vermont. These dedicated family farmers faithfully stoke their sugar house evaporators each spring to carry on this time-honored tradition. We are proud to be able to help sustain family farms.

## Maple Syrup Vermont Grade A - 64oz



## Locally Made in Vermont

Behind the Cape's Best Restaurants



Since 1925

# FRESH. LOCAL. DELIVERED DAILY.

www.ringbroswholesale.com | 800-649-9827 | 485 Route 134 | South Dennis, MA 02660

**DRIED CHILIS (WHOLE)**

DRIED CHILIS, ANCHO 5 LB

EACH

DRIED CHILIS, GUAJILLO 5 LB

EACH

**DRIED FRUITS**

DRIED FRUITS, APRICOTS #4 7 LB TUB

EACH

DRIED FRUITS, BLUEBERRIES 5 LB BOX

EACH

DRIED FRUITS, CHERRIES 5 LB BOX

EACH

DRIED FRUITS, CRANBERRIES 6 LB TUB

EACH

DRIED FRUITS, DATES 11 LB

CASE / LB

DRIED FRUITS, FIGS (SIERRA) 5 LB BOX

EACH

DRIED FRUITS, RAISINS (THOMPSON) 7LB TUB

EACH

DRIED FRUITS, GOLDEN RAISINS 7 LB TUB

EACH

DRIED FRUITS, TOMATOES S/D (DICED) 5 LB BAG

EACH

DRIED FRUITS, TOMATOES S/D (HALVES) 5 LB BAG

EACH

DRIED FRUITS, TOMATOES S/D (JULIENNE) 5 LB BAG

EACH

**FRY BATTER**

CLAM FRY (GOLDEN DIPT) 50 LB

EACH

**GRAINS**

GRAINS, FARRO 4/3 LB

EACH

GRAINS, QUINOA RED 5 LB

EACH

GRAINS, QUINOA WHITE 5 LB

EACH

GRAINS, QUINOA TRI-COLOR 5 LB

EACH

POLENTA, YELLOW MEDIUM GRAIN 5 LB

EACH

**MILK SUBSTITUTES (SHELF STABLE)**

ALMOND MILK, ORG ORIGINAL UNSWT (PACIFIC) 12/32 OZ

CASE

COCONUT MILK, ORG ORIGINAL UNSWT 12/32OZ

CASE

**NUTS / SEEDS**

NUTS, ALMONDS (BLANCHED, SLIVERED) 5 LB TUB

EACH

NUTS, ALMONDS (BLANCHED, SLICED) 5 LB TUB

EACH

NUTS, ALMONDS (RAW, WHOLE) 6LB TUB

EACH

NUTS, ALMONDS (MARCONA) 5 KILO TUB

EACH

NUTS, CASHEWS (HALVES) 5LB TUB

EACH

NUTS, HAZELNUTS (UNBLANCHED FILBERTS) 6 LB TUB

EACH

NUTS, PEANUTS (UNSALTED, SHELLED) 6 LB TUB

EACH

NUTS, PECAN (HALVES, JR. MAMMOTH) 4 LB TUB

EACH

NUTS, PIGNOLIA (PINE NUTS) 6 LB TUB, LB

EACH / LB

NUTS, PISTACHIOS (RAW, MEATS) 6 LB TUB

EACH

NUTS, WALNUTS (HALVES &amp; PIECES) 4 LB TUB

EACH

SEEDS, PEPITAS (RAW) 5 LB TUB

EACH

**OILS / VINEGARS**

OILS, 10% SALAD OIL 6/3 LITER

CASE

OILS, AVOCADO (MARCONI) 4/51 OZ BAG-IN-BOX

CASE / EACH

OILS, CANOLA (CATANIA) 35 LB JIB

EACH

OILS, EXTRA VIRGIN FRSH HRVST (MARCONI) 4/51 OZ BAG-IN-BOX

CASE / EACH

OILS, EXTRA VIRGIN FRSH HRVST (MARCONI) 10L BAG-IN-BOX

EACH

OILS, EXTRA VIRGIN, GREEK (ARISTON) 5L

EACH

OILS, EXTRA VIRGIN W/ TRUFFLE 8 OZ

EACH

OILS, SESAME 100% PURE 56 OZ

EACH

VINEGAR, APPLE CIDER (BRAGG) 1 GAL

EACH

VINEGAR, BALSAMIC, MODENA (ARISTON) 1GAL

EACH

VINEGAR, BALSAMIC GLAZE 6/12.9 OZ

CASE / EACH

VINEGAR, RED WINE 1 GAL

EACH

VINEGAR, RICE WINE 1 GAL

EACH

VINEGAR, SHERRY WINE 25 OZ

EACH

VINEGAR, WHITE 1 GAL

EACH

**PASTES / SPREADS**

PASTE, TAHINI 16 OZ

EACH

PASTE, HARISSA 12 OZ JAR

EACH

PASTE, VANILLA BEAN 35 OZ

EACH

SPREAD, FIG (DIVINA) 3.5 LB

EACH

**RICE / DRY PASTA**

RICE, ARBORIO 12/35 OZ

CASE / EACH

RICE, BASMATI 10 LB

EACH

RICE, JASMINE 25 LB

EACH

RICE, SUSHI 15 LB

EACH

RICE, WHITE LONG GRAIN CONVERTED (BEN'S) 25 LB

EACH

COUSCOUS, ISREALI 4/5 LB

EACH

**SALAD DRESSINGS**

DRESSING, BALSAMIC VINAIGRETTE LOCAL (KEN'S) 4/1 GAL

CASE / EACH

DRESSING, BLUE CHEESE (CHUNKY) LOCAL (KEN'S) 4/1 GAL

CASE / EACH

DRESSING, HONEY MUSTARD LOCAL (KEN'S) 4/1 GAL

CASE / EACH





# ***SALAD DRESSING***

## **RIVERWAY CAPE COD DRESSING FOR SALADS AND SEAFOODS**



Created in 1945 from a Bass River Sea Captain's recipe brought from the Far East and perfected in a Yarmouthport home, this dressing contains Chinese mustard and garlic in a perfect blend to captivate with its unique taste.

### **RIVERWAY CAPE COD SALAD DRESSING**

*12/8oz Bottles*

Upc 0-37373-19999-4



**Locally Made  
in Avon, MA**



Ken's is a family business that traces back to the basement of Ken's Steak House, a restaurant in Framingham, Massachusetts that became known for its delicious salad dressings.

**BALSAMIC VINAIGRETTE, CHUNKY BLUE CHEESE,  
CREAMY ITALIAN, DELUXE ITALIAN, HONEY MUSTARD,  
MAGIC BLEND COLESLAW, CREAMY CAESAR,  
BUTTERMILK RANCH, PARMESEAN PEPPERCORN**

*1 Gallon*



**Locally Made in Marlborough, MA**

**Behind the Cape's Best Restaurants**



**Since 1925**

**FRESH. LOCAL. DELIVERED DAILY.**

**www.ringbroswholesale.com | 800-649-9827 | 485 Route 134 | South Dennis, MA 02660**



# EAST WEST

Rich in culture and food history, the nations on the shores of the brilliant azure Mediterranean Sea—Italy, Spain, France, Morocco, Greece, Lebanon, Syria, Turkey and Israel—have all contributed something special to the colorful, vibrant tapestry that is Mediterranean cuisine. These imported items from East West are quality Mediterranean foods used to create authentic dishes.



## Mediterranean Specialty Food Products

**Kalamata Pitted Olives 10lb tub**  
**Mixed Mediterranean Pitted Olives 10lb tub**  
**Spanish Queen Pitted Olives 1 Gallon**  
**Spanish Queen Stuffed Olives 1 Gallon**  
**Non Pareil Capers 32oz**  
**Caperberries 32oz**



Behind the Cape's Best Restaurants



Since 1925

**FRESH. LOCAL. DELIVERED DAILY.**

[www.ringbroswholesale.com](http://www.ringbroswholesale.com) | 800-649-9827 | 485 Route 134 | South Dennis, MA 02660





SALT, SEA SALT FINE (EAST WEST) 32OZ	EACH
SALT, SEA SALT COURSE (EAST WEST) 32OZ	EACH
SALT, SEA SALT FINISHING (MALDON) 8.5OZ	EACH
SALT, SEA SALT GRAY (EAST WEST) 32 OZ	EACH
SESAME SEED, BLACK (EAST WEST) 20 OZ	EACH
SESAME SEED, TUXEDO (EAST WEST) 20 OZ	EACH
SESAME SEED, WHITE (EAST WEST) 20 OZ	EACH
TARRAGON LEAVES (EAST WEST) 2 OZ	EACH
THYME LEAVES (EAST WEST) 7 OZ	EACH
TOGARASHI 300 GRAM	EACH
TURMERIC POWDER (EAST WEST) 16 OZ	EACH
<b><u>TORTILLAS</u></b>	
TORTILLAS, FLOUR 6IN 20CT	EACH
TORTILLAS, FLOUR 12IN 20CT	EACH
TORTILLAS, CORN 6IN 10CT	EACH
<b><u>VEGETABLES / FRUITS</u></b>	
ARTICHOKES, HEARTS QUARTERED 3 KG CAN	EACH
BABY CORN (150-200CT) #10 CAN	EACH
BEANS, BLACK BEANS #10 CAN	EACH
BEANS, CHICK PEAS #10 CAN	EACH
BEANS, CANNELLINI #10 CAN	EACH
BEANS, GIGANDES IN VINAIGRETTE (DIVINA) 4 LB CAN	EACH
BEANS, RED KIDNEY #10 CAN	EACH
BEETS, RED SALAD (DIVINA) 6.1LB CAN	EACH
CAPERS, NON PAREIL (EAST WEST) 32 OZ JAR	EACH
CAPERBERRIES (EAST WEST) 32 OZ JAR	EACH
CHERRIES, LARGE W/ STEMS 1 GAL	EACH
CORNICHONS 5 KILO	EACH
GRAPE LEAVES, DOLMAS (DIVINA) 2 KILO	EACH
OLIVES, BLACK PITTED MEDIUM #10 CAN	EACH
OLIVES, BLACK SLICED #10 CAN	EACH
OLIVES, MIXED MEDITERRANEAN PITTED (EAST WEST) 10 LB TUB	EACH
OLIVES, KALAMATA PITTED (EAST WEST) 10 LB TUB	EACH
OLIVES, SPANISH QUEEN PITTED (EAST WEST) 1 GAL	EACH
OLIVES, SPANISH QUEEN STUFFED (EAST WEST) 1 GAL	EACH
PEPPERS, BANANA RINGS 1 GAL	EACH
PEPPERS, JALAPENO (SLICED) 1GAL	EACH
PEPPERS, ROASTED RED 3 KG CAN	EACH
PEPPERS, PEPPERONCINI 1 GAL	EACH
PEPPERS, ROASTED YELLOW #10 CAN	EACH
PEPPERS, SWEETY DROPS, PERUVIAN TEAR DROP PEPPERS 6.6 LB	EACH
PICKLES, KOSHER DILL CHIPS 5 GAL (REFRIGERATED)	EACH
PICKLES, KOSHER DILL SPEARS 5 GAL (REFRIGERATED)	EACH
PUMPKIN, PUREE #10 CAN (SEASONAL)	EACH
TOMATOES, ROASTED RED TOMATOES (DIVINA) 4LB (FROZEN)	EACH

# EAST WEST



When you select this product you are getting product which is hand picked to be flavorful and of premium quality.

Our apricots are brilliantly orange, cranberries plump, and cherries are a perfect blend of sweet and tart.

## Dried Fruits

APRICOTS #4 7 LB TUB  
BLUEBERRIES 5 LB BOX  
CHERRIES 5 LB BOX  
CRANBERRIES 6 LB TUB  
DATES 10 LB BOX  
FIGS (SIERRA) 5 LB BOX  
RAISINS (THOMPSON) 7LB TUB  
RAISINS (GOLDEN SELECT) 7 LB TUB  
TOMATOES S/D (DICED) 5 LB BAG  
TOMATOES S/D (HALVES) 5 LB BAG  
TOMATOES S/D (JULIENNE) 5 LB BAG



## Snack Mix and Trail Mix

**CAPE COD SAND BAR MIX 9x4 LB TUB *SPECIAL ORDER***

A classic mix of Mini Pretzels, BBQ Corn Sticks, Butter Toffee Peanuts, Cheddar Crackers, Sesame Sticks and Honey Roast Sesame Chips.

**CAPE COD RAIL TRAIL MIX 9x5 LB TUB *SPECIAL ORDER***

A delicious mix of Honey Roast Sesame Sticks, Honey Roast Peanuts, Cinnamon Apple Chips, Pineapple and Cranberries.



*There's no need to stock large cases of product which ties up inventory because most product is packed in convenient resealable tubs.*

# EAST WEST

Our nuts are premium quality that any chef on Cape would be proud to use.

The cashews are savory with a taste of sweet, pecans are a beautiful golden brown color, and almonds taste amazing.



## Nuts and Seeds

**ALMONDS (BLANCHED, SLIVERED) 5 LB TUB**  
**ALMONDS (BLANCHED, SLICED) 5 LB TUB**  
**ALMONDS (RAW, WHOLE) 6 LB TUB**  
**ALMONDS (MARCONA) 5 KILO TUB**  
**CASHEWS (HALVES) 5 LB TUB**  
**HAZELNUTS (UNBL. FILBERTS) 6 LB TUB**  
**PEANUTS (UNSALTED, SHELLED) 6 LB TUB**  
**PECAN (HALVES, JR. MAMMOTH) 4 LB TUB**  
**PEPITAS (RAW) 7LB TUB**  
**PIGNOLIA NUTS (PINE NUTS) 6 LB TUB, LB**  
**PISTACHIOS (RAW, MEATS) 6 LB TUB**  
**WALNUTS (HALVES & PIECES) 4 LB TUB**



## Snacks

**WASABI GREEN PEAS 22 LB BOX**



*Most product is packed in convenient resealable tubs.*

Behind the Cape's Best Restaurants



Since 1925

**FRESH. LOCAL. DELIVERED DAILY.**

www.ringbroswholesale.com | 800-649-9827 | 485 Route 134 | South Dennis, MA 02660

SPECIALTY



# EAST WEST



We buy from a family owned business that has committed their lives to sourcing these spices from around the world.

Our mission is to provide the best quality spices at the best prices.

## Dried Herbs and Spices

ALLSPICE, GROUND  
ANISE SEED  
ANCHO CHILI POWDER  
BASIL, CUT  
BAY LEAVES  
CARAWAY, WHOLE  
CAYENNE PEPPER  
CELERY SEED, WHOLE  
CORRIANDER, GROUND  
PEPPER, CRUSHED RED  
CHILI POWDER  
ANCHO CHILI POWDER  
CHIPOTLE CHILI POWDER  
CHIVES  
CINNAMON POWDER  
CINNAMON STICKS  
CUMIN POWDER  
CURRY POWDER  
DILL WEED  
FENNEL SEED, WHOLE  
GARLIC POWDER (CALIF)  
GINGER, GROUND  
HERBS DE PROVENCE  
MARJORAM, GROUND  
MARJORAM, LEAVES  
MUSTARD POWDER  
NUTMEG, GROUND  
NUTMEG, WHOLE  
ONION POWDER  
OREGANO LEAVES  
PAPRIKA, SPANISH FANCY

PAPRIKA, SMOKED  
PARSLEY  
PEPPER, BLACK CRACKED(BUTCHER'S)  
PEPPER, BLACK TABLE GRIND  
PEPPER, BLACK WHOLE PEPPERCORNS  
PEPPER, CRUSHED RED  
PEPPER, MIXED PEPPERCORNS (RAINBOW)  
PEPPER, PINK PEPPERCORNS  
PEPPER, WHITE GROUND  
PEPPER, WHITE WHOLE  
PICKLING SPICE  
POPPY SEED  
ROSEMARY LEAVES  
SAFFRON  
SAGE, RUBBED  
SALT, BLACK TRUFFLE  
SALT, KOSHER  
SALT, PINK HIMALAYAN  
SALT, BLACK HAWAIIAN  
SALT, SEA SMOKED  
SALT, SEA (FINE)  
SALT, SEA (COURSE)  
SALT, SEA SALT (GRAY)  
SESAME SEED, BLACK  
SESAME SEED, TUXEDO  
SESAME SEED, WHITE  
TARRAGON LEAVES  
THYME LEAVES  
TURMERIC POWDER



# *EAST WEST*

These seasonings have been formulated by the small family business we source our spices from.

The blends are recognizable, but perfectly balanced for the flavor a chef is looking for.



## **Seasonings**

**BAY SEASONING**  
**BLACKENING SPICE**  
**CAJUN SPICE**  
**CHINESE FIVE SPICE**  
**HOME FRY SEASONING**  
**JAMAICAN JERK SEASONING**  
**NANTUCKET SEAFOOD SEASONING**  
**POULTRY SEASONING**  
**RIB RUB**  
**NEW ENGLAND STEAK SEASONING**

## **About East West Specialties**

Offered exclusively by Ring Bros. Wholesale we offer a broad range of products with the highest standard of quality a chef demands.

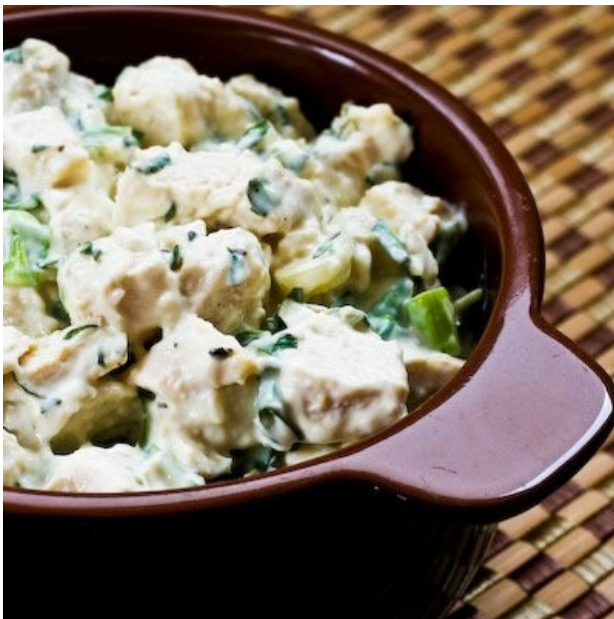
Each product has been carefully chosen after rigorous quality testing and review. Cape Cod chefs feel comfortable and trust that when they see a product with the East West badge, it should exceed quality expectations.

# BOSTON SALADS

Fresh ingredients and personal attention, which is why we make all of our salads with minimal preservatives.

Our salads are made fresh so you can enjoy them fresh - we wouldn't have it any other way! From chicken salad, to coleslaw, we make it all fresh everyday.

For your restaurant, salad bar, sandwich menu or catering event, our selection caters to a variety of your meal-time needs.



PREPARED



Locally Made in Boston, MA

Behind the Cape's Best Restaurants



Since 1925

**FRESH. LOCAL. DELIVERED DAILY.**

www.ringbroswholesale.com | 800-649-9827 | 485 Route 134 | South Dennis, MA 02660



### **BOSTON SALAD CLASSIC SALADS**

BOSTON SALAD, ASIAN CHOPPED COLE SLAW 2 /5LB	CASE
BOSTON SALAD, CHEF'S POTATO & EGG SALAD 2/5LB	CASE
BOSTON SALAD, COLE SLAW 2/5LB	CASE
BOSTON SALAD, COUNTRY COLE SLAW 2/5LB	CASE
BOSTON SALAD, CREAMY CHOPPED COLE SLAW 2/5LB	CASE
BOSTON SALAD, DEVEILED EGG & POTATO SALAD 2/5LB	CASE
BOSTON SALAD, ELBOW MACARONI SALAD 2/5LB	CASE
BOSTON SALAD, EPICUREAN POTATO SALAD 2/5LB	CASE
BOSTON SALAD, GERMAN POTATO SALAD 2/5LB	CASE
BOSTON SALAD, IDAHO BAKED POTATO 2/5LB	CASE
BOSTON SALAD, POTATO SALAD 2/5LB	CASE
BOSTON SALAD, REDSKIN POTATO SALAD 2/5LB	CASE

### **BOSTON SALAD SANDWICH SALADS**

BOSTON SALAD, BUFFALO CHICKEN SALAD 2/5LB	CASE
BOSTON SALAD, CAPE COD STYLE CHICKEN SALAD 2/5LB	CASE
BOSTON SALAD, CHICKEN SALAD 2/5LB	CASE
BOSTON SALAD, CRANBERRY WALNUT CHICKEN SALAD 2/5LB	CASE
BOSTON SALAD, DELUXE EGG SALAD 2/5LB	CASE
BOSTON SALAD, DELUXE HAM SALAD 2/5LB	CASE
BOSTON SALAD, SEAFOOD SALAD 2/5LB	CASE
BOSTON SALAD, SHRIMP AND SEAFOOD SALAD 2/5LB	CASE
BOSTON SALAD, SWEET CURRY CHICKEN SALAD 2/5LB	CASE
BOSTON SALAD, TUNA SALAD 2/5LB	CASE
BOSTON SALAD, WHITE MEAT CHICKEN SALAD 2/5LB	CASE

### **BOSTON SALAD PASTA SALADS**

BOSTON SALAD, ASIAN SESAME NOODLE SALAD 2/5LB	CASE
BOSTON SALAD, BUFFALO CHICKEN WITH ROTINI PASTA 2/5LB	CASE
BOSTON SALAD, CHEDDAR MACARONI 2/5LB	CASE
BOSTON SALAD, CHEESE TORTELLINI 2/5LB	CASE
BOSTON SALAD, CREAMY ITALIANO PASTA SALAD 2/5LB	CASE
BOSTON SALAD, GOURMET RADIATORE SALAD 2/5LB	CASE
BOSTON SALAD, GREEK PASTA SALAD 2/5LB	CASE
BOSTON SALAD, MEDITERRANEAN BOW TIE PASTA SALAD 2/5LB	CASE
BOSTON SALAD, ORIENTAL NOODLE 2/5LB	CASE
BOSTON SALAD, PASTA PRIMAVERA 2/5LB	CASE
BOSTON SALAD, SPINESTO PASTA 2/5LB	CASE
BOSTON SALAD, TORTELLINI PESTO SALAD 2/5LB	CASE
BOSTON SALAD, ZINFANDEL BOW TIE PASTA 2/5LB	CASE

### **BOSTON SALAD SPECIALTY SALADS**

BOSTON SALAD, ANTIPASTO SALAD BASE 2/5LB	CASE
BOSTON SALAD, ARTICHOKE SALAD 2/5LB	CASE
BOSTON SALAD, ASIAN CHICKEN NOODLE SALAD 2/5LB	CASE
BOSTON SALAD, BARBEQUE BAKED BEANS 2/5LB	CASE
BOSTON SALAD, BEET & ONION 2/5LB	CASE
BOSTON SALAD, CARROT & RAISIN 2/5LB	CASE
BOSTON SALAD, CITRUS QUINOA WITH ALMONDS 2/5LB	CASE
BOSTON SALAD, CONFETTI COUSCOUS 2/5LB	CASE
BOSTON SALAD, COWBOY CAVIAR 2/5LB	CASE
BOSTON SALAD, CUBAN BLACK BEAN 2/5LB	CASE
BOSTON SALAD, CUCUMBER MARINADE 2/5LB	CASE
BOSTON SALAD, CURRIED COUSCOUS SALAD 2/5LB	CASE
BOSTON SALAD, EDAMAME SALAD 2/5LB	CASE
BOSTON SALAD, EDAMAME RICE NOODLE SALAD 2/5LB	CASE
BOSTON SALAD, FARRO & ARTICHOKE HEARTS BALSAMIC 2/5LB	CASE
BOSTON SALAD, FOUR BEAN SALAD 2/5LB	CASE
BOSTON SALAD, GOURMET BEAN SALAD 2/5LB	CASE
BOSTON SALAD, ITALIAN MARINATED MUSHROOMS 2/5LB	CASE
BOSTON SALAD, MARINATED ROASTED RED PEPPERS 2/5LB	CASE

## **ORDER ON MONDAY FOR FRIDAY DELIVERY**

**All product ordered direct from Boston Salad. We do not stock product, in order to give our customers the longest possible shelf life. Product Refrigerated. Shelf life 21-30 days from date of production.**

# THE *PERFECT PUREE*

Seeking to infuse your culinary creations with the ultimate fresh fruit or vegetable flavors? Never mind peeling, dicing, pureeing, and simmering for those just-right recipe results. Discover why they're revered in restaurant, bakery, hotel, and catering kitchens for their amazing taste and ideal consistency every time. The Perfect Purée products are all natural and developed to be unique and add value for professionals in the foodservice and beverage industry as well as to food-savvy cooking enthusiasts.

**BLACKBERRY  
BLOOD ORANGE  
COCONUT  
LEMON ZEST  
LYCHEE  
MANGO  
ORANGE ZEST  
PASSION FRUIT  
PEAR  
PINK GUAVA  
RED RASPBERRY  
STRAWBERRY  
TAMARIND  
WHITE PEACH**



*6/30oz wide mouthed HDPE jars per case.  
Each jar attaches to a standard bar pour spout.  
Keep frozen. Product good for 7-10 days  
thawed and refrigerated at 40° F and up to 24 months  
frozen from manufactured date.*

**FROZEN**

**Behind the Cape's Best Restaurants**



**Since 1925**

**FRESH. LOCAL. DELIVERED DAILY.**

**www.ringbroswholesale.com | 800-649-9827 | 485 Route 134 | South Dennis, MA 02660**

**DESSERTS (FROZEN)**HOFFS DESSERTS, MISSISSIPPI MUD SQUARE **LOCAL (HOFF'S)** CASE**DIPS / PULP (FROZEN)**

FROZEN DIP, GUACAMOLE 12 / 1 LB CASE

**FRENCH FRIES**

FRENCH FRIES, 3/8" UNCOATED (DOUBLE RR) 6/5 LB CASE

FRENCH FRIES, 5/16" SHOESTRING CLEAR CT (CAVENDISH/REGAL) 6/4.5 LB CASE

FRENCH FRIES, 3/8" BATTERED (REGAL KRISPY GOLD) 6/4.5 LB CASE

FRENCH FRIES, 3/8" SWEET POTATO (MCCAIN HARVEST SPLENDOR) 6/2.5LB CASE

**FRUITS & VEGETABLES (FROZEN)**

FROZEN, APPLES IQF 40 LB CASE

FROZEN, BANANAS CHOPPED 2/5 LB CASE

FROZEN, BANANA LEAVES 20 LB CASE

FROZEN, BLACKBERRIES IQF 10 LB CASE

FROZEN, BLUEBERRIES CULTIVATED 30 LB CASE

FROZEN, BLUEBERRIES WILD 30 LB CASE

FROZEN, CRANBERRIES WHOLE 40 LB CASE

FROZEN, CRANBERRIES SLICED 20 LB CASE

FROZEN, CUT CORN 12/2.5 LB CASE

FROZEN, MANGOES IQF 30 LB CASE

FROZEN, PEAS 12/2.5 LB CASE

FROZEN, PETITE GREEN PEAS 12/2.5 LB CASE

FROZEN, RASPBERRIES IQF 10 LB CASE

FROZEN, STRAWBERRIES IQF 10 LB CASE

FROZEN, STRAWBERRIES SLICED 6/6.5 LB BAG CASE / EACH

FROZEN, ROASTED RED TOMATOES (DIVINA) 4LB EACH

**ICE CREAM**ICE CREAM, VANILLA **LOCAL (HOOD)** 3GAL EACHICE CREAM, CHOCOLATE **LOCAL (HOOD)** 3GAL EACHICE CREAM, COFFEE **LOCAL (HOOD)** 3GAL EACHICE CREAM, STRAWBERRY **LOCAL (HOOD)** 3GAL EACHICE CREAM, FRENCH VANILLA **LOCAL (GIFFORDS)** 3GAL EACH**MEAT / MEAT ALTERNATIVES (FROZEN)**BACON, APPLE WOOD SMKD THCK CT **LOCAL (BOSTON BRISKET)** 15 LB AV CASE

BACON, LAYOUT 18-22 SLICE 15LB CASE

BEYOND, BURGER 32/6 OZ CASE

BEYOND, CHICKEN TENDERS 2/5 LB CASE

BEYOND, SAUSAGE PATTIES 1.66OZ 2/5 LB CASE

SAUSAGE, BREAKFAST 10 LB CASE

SAUSAGE, PATTIES 10 LB CASE

**PASTA (FROZEN)**PASTA, BUCATINI BLACK PEPPER **LOCAL (LILY'S FRESH PASTA)** 9 LB CASEPASTA, LINGUINI **LOCAL (LILY'S FRESH PASTA)** 9 LB CASERAVIOLI, 5 CHEESE **LOCAL (LILY'S FRESH PASTA)** 6 LB CASERAVIOLI, LOBSTER **LOCAL (LILY'S FRESH PASTA)** 6 LB CASERAVIOLI, WILD MUSHROOM **LOCAL (LILY'S FRESH PASTA)** 6 LB CASE**PASTRY SHEETS**

PASTRY SHEETS, PUFF PASTRY 10X15 CASE

**PRETZELS (FROZEN)**PRETZELS, TOPKNOT SOFT **LOCAL (EASTERN STANDARD)** 24 CT CASE**PUREES (THE PERFECT PUREE)**

PUREE, BLACKBERRY 6/30 OZ CASE / EACH

PUREE, BLOOD ORANGE CONCENTRATE 6/30 OZ CASE / EACH

PUREE, COCONUT 6/30 OZ CASE / EACH

PUREE, LEMON ZEST 6/30 OZ CASE / EACH

PUREE, MANGO 6/30 OZ CASE / EACH

PUREE, ORANGE ZEST 6/30 OZ CASE / EACH

PUREE, PASSION FRUIT 6/30 OZ CASE / EACH

PUREE, PEAR 6/30 OZ CASE / EACH

PUREE, PINK GUAVA 6/30OZ CASE / EACH

PUREE, RASPBERRY 6/30 OZ CASE / EACH

PUREE, STRAWBERRY 6/30 OZ CASE / EACH

PUREE, TAMARIND 6/30 OZ CASE / EACH

PUREE, WHITE PEACH 6/30 OZ CASE / EACH





# LILLY'S FRESH PASTA

Our fresh pasta is made from 100% Semolina flour shipped from the North Dakota flour mills, known for producing the best flour in the country. We turn this nutritious flour into fresh gourmet pasta with the addition of grade A eggs and filtered water – and that's it.



## 5 Cheese Ravioli 6lb

Large hexagon shaped pasta, Imported fontina, Wisconsin white Cheddar, ricotta, fresh mozzarella and a touch of pecorino

## Lobster Ravioli 6lb

Large hexagon shaped pasta, 100% Lobster

## Wild Mushroom Ravioli 6lb

Large hexagon shaped pasta, Roasted Porcini, Portobello, Shiitake, Oyster, Wood Ear, and Black Trumpet mushrooms folded with imported fontina cheese and fresh thyme.

## Linguini 9lb

Long, slender shaped pasta, flat strips and often served with seafood or pesto

## Black Pepper Bucatini 9lb

Long rod shaped pasta with a hollow center, perfect for capturing light sauces.



Locally Made  
in Everett, MA

FROZEN

Behind the Cape's Best Restaurants



Since 1925

**FRESH. LOCAL. DELIVERED DAILY.**

www.ringbroswholesale.com | 800-649-9827 | 485 Route 134 | South Dennis, MA 02660

# BOSTON BRISKET

Boston Brisket Co. is Boston's leading producer of fine meat products since 1982.



Applewood Smoked  
Thick Sliced Bacon  
*15lb avg*



Locally Made in Roxbury, MA

# JONES FARM

Breakfast sausage is our signature product at Jones Dairy Farm. We use the same ingredients that Milo Jones used more than 127 years ago when he started the company—pork, water, salt and spices. The result is an array of all-natural, Certified Gluten-Free sausage links, patties and roll sausage that have become a staple on breakfast tables throughout the country.



Breakfast Link Sausages  
*10lb*

Sausage Patties  
*10lb*

FROZEN

# BOULART BAKERY

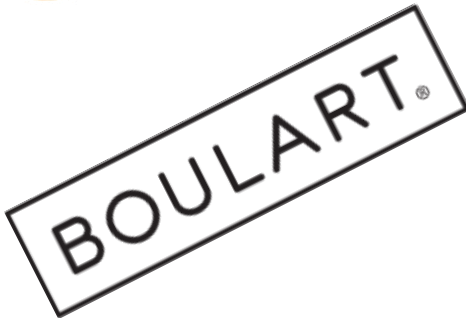
Baked in Quebec we strive to create uncompromisingly authentic bread, made only with the finest ingredients. Breads that are always soft and rich, always flavorful, and adapted to tastes the world over.



**Ciabatta Baguette**

18" 18/11.5oz PAR

*Bags available for retail sale*



**Ciabatta Allegro  
Sandwich Roll**

6" 48/3.2oz PAR



**Artisan Square  
Burger Roll (Sliced)**

3.5" 80/3.5oz PAR

# FIREKING BAKING

Fireking became known as an innovator in the baking industry, offering many different types of artisan breads. Fireking Baking Company operates from a state-of-the-art, nut-free, HACCP compliant facility.



**Fireking  
Brioche Lobster Rolls**

6" 56ct FB

BREAD

Behind the Cape's Best Restaurants



Since 1925

**FRESH. LOCAL. DELIVERED DAILY.**

www.ringbroswholesale.com | 800-649-9827 | 485 Route 134 | South Dennis, MA 02660



### **TRIBECA BAKERY**

BURGER ROLLS, CHALLAH (BRIOCHE) 60 CT **FB**

CASE

SLIDER ROLLS, CHALLAH (BRIOCHE) 192 CT **FB**

CASE

### **BOULART BAKERY**

BAGUETTE, CIABATTA 11.5OZ 18 CT **PAR** 23100

CASE

SANDWICH ROLLS, CIABATTA ALLEGRO 3.2OZ 6" 48 CT **PAR** 13703

CASE

BURGER ROLLS, ARTISAN SQUARE (SLICED) 3.5OZ 3.5" 80 CT **PAR** 13607

CASE

### **FIREKING BAKING**

LOBSTER ROLLS, BRIOCHE 6" 56 CT **FB**

CASE

### **NASHOBA BROOK BAKERY**

HALF DELI, SOURDOUGH 6/21 OZ **FB LOCAL**

CASE

HALF DELI, EVERYTHING SOURDOUGH 6/21 OZ **FB LOCAL**

CASE

HALF DELI, 7 GRAIN 6/21 OZ **FB LOCAL**

CASE

HALF DELI, ROSEMARY GARLIC 6/20 OZ **FB LOCAL**

CASE

HALF DELI, HARVEST 6/23 OZ **FB LOCAL**

CASE

HALF DELI, PEPPER JACK 6/21 OZ **FB LOCAL**

CASE

HALF DELI, RYE 6/19 OZ **FB LOCAL**

CASE

HALF DELI, FRENCH 6/19 OZ **FB LOCAL**

CASE

DINNER ROLLS, MIXED 36 SOURDGH, 36 FRNCH, 36 RSMRY GR LIC 108 CT **FB LOCAL**

CASE

DINNER ROLLS, FRENCH 108 CT **FB LOCAL**

CASE

### **OMG BAGELS**

BAGELS, ASSORTED (12 PL, 6 SES, 6 RSN, 6 EVTH, 6 ON) **LOCAL** 6 / 6CT (36CT) **FB**

CASE

### **SCHAR GLUTEN FREE BAKERY**

SCHAR GLUTEN FREE BAKERY, WHITE BREAD (SLICED) 8/14.1 OZ **FB**

CASE/EACH

SCHAR GLUTEN FREE BAKERY, HAMBURGER BUNS 5/4 CT **FB**

CASE/EACH

SCHAR GLUTEN FREE BAKERY, HOT DOG BUNS 5/4CT **FB**

CASE/EACH

### **OTHER**

ENGLISH MUFFINS (GOLD MEDAL) 10Z 6CT **FB**

EACH

ENGLISH MUFFINS, CINNAMON RAISIN **LOCAL (EAST WEST)** 12 / 4CT (48CT) **FB**

CASE

ENGLISH MUFFINS, ORIGINAL **LOCAL (EAST WEST)** 12 / 4CT (48CT) **FB**

CASE

ENGLISH MUFFINS, WHOLE WHEAT **LOCAL (EAST WEST)** 12 / 4CT (48CT) **FB**

CASE

PITA (SYRIAN) POCKET 8IN **FB**

EACH

**FB** FULLY BAKED

**PAR** PAR BAKED

# OMG BAGELS



Finally! OMG! Bagels has brought a delicious New York style bagel to the Boston area. One taste and you will agree that these bagels rival even the best bagels in New York in terms of size, flavor, texture, and quality of ingredients.

**Assorted NY Style Bagels**

*Plain, Sesame, Raisin, Everything, Onion*

*6/6ct (36ct) **FB***

# TRIBECCA BAKERY



*Tribeca Oven par-baked breads are baked to old-world standards and flash-frozen to preserve the complexity of flavors, the rich and chewy textures.*

**Challah (Brioche Style) Burger Roll**

*3.5" 60/3.5oz **FB***

**Challah (Brioche Style) Slider Rolls**

*192ct **FB***



# EAST WEST

These English muffins are handcrafted for East West using only natural ingredients. This two day painstaking process by the baker allows for a look and taste that distinguishes the product from any other English muffins on the market. Your search is over for a premium English muffin to elevate your meal.



*All Natural - Handcrafted*  
**Original English Muffins**  
**Cinnamon Raisin English Muffins**  
**Whole Wheat English Muffins**  
*12 x 4pk*  
*(48 muffins per case)*  
*Sold by frozen and by the case only.*  
*3 day shelf life once thawed.*



**Locally Made in Boston, MA**

**BREAD**

**Behind the Cape's Best Restaurants**



**Since 1925**

**FRESH. LOCAL. DELIVERED DAILY.**

**www.ringbroswholesale.com | 800-649-9827 | 485 Route 134 | South Dennis, MA 02660**



# NASHOBA BROOK

Passion and artistry are the heart of Nashoba Brook Bakery, but the fuel that feeds our hearth is wild yeast. Captured using Concord grapes found on the banks of the Nashoba Brook, this organic yeast feeds our doughs daily. The slow rise of each hand-formed loaf creates enzymes that break down the complex carbohydrates in flour, releasing vitamins and making it easier for your body to digest the goodness of Nashoba breads. "Slow Rise" also stands in contrast to the culture of instant gratification, and we believe that anything worth having is worth waiting for.



## Retail Breads

Half Deli, Sourdough  
Half Deli, Everything  
Half Deli, 7 Grain  
Half Deli, Rsmry Garlic  
Half Deli, Harvest  
Half Deli, Pepper Jack  
Half Deli, Rye  
Half Deli, French

## Foodservice Breads

Mixed Dinner Rolls  
(Sourdough, French, Rosemary Garlic)

French Rolls



**Locally Made in Concord, MA**

Behind the Cape's Best Restaurants



Since 1925

**FRESH. LOCAL. DELIVERED DAILY.**

www.ringbrosholesale.com | 800-649-9827 | 485 Route 134 | South Dennis, MA 02660





### General Information

Office Hours are: Monday - Friday 7am - 5pm,  
Saturday 7am - 12pm.

Our office is closed on Sunday but we make  
deliveries and staff is available to assist you.

### Customer Service

Phone: 1-800-649-9827

Phone: 508-394-5022

Fax: 508-394-0992

[www.ringbroswholesale.com](http://www.ringbroswholesale.com)

E-mail: [customerservice@ringbroswholesale.com](mailto:customerservice@ringbroswholesale.com)

### Billing Address

P.O. Box 1475

South Dennis, MA 02660

### Physical Address

485 Route 134

South Dennis, MA 02660

### Retail Store

Ring Bros. Marketplace

485 Route 134, South Dennis, MA 02660

Phone: 508-394-2244

Fax: 508-394-0121

Website: [www.ringbrosmarketplace.com](http://www.ringbrosmarketplace.com)

**Ring Bros.**  
**Marketplace**